



## Woodlands Road Bromley, BR1

**£2,950 Per month**

**\*\* MODERN APARTMENT AVAILABLE NOW \*\* PRIVATE ROAD \*\*** Executive apartment to rent within a beautiful brand new development. This spacious apartment is arranged over 1031 sq ft and is situated on the first floor, the accommodation comprises of an entrance hallway, large open-planned kitchen/living room, two double bedrooms, the primary bedroom with ensuite and dressing room/wardrobe space, utility room and additional bathroom. Other features include a Juliet balcony off of the living room, Neff kitchen appliances and gas central heating. Building with lift. Allocated parking for one car. Available now.

Phoenix House is a stunning development comprising twelve modern apartments built in 2023. The development is situated within a private road and conveniently located next to Chislehurst Mainline Station.

Local Authority: London borough of Bromley  
Council Tax: Band E

Pets: Unfortunately the Headlease prohibits pets

Term: Minimum term 12 months with no break clause, maximum term 36 months

- Two Bedroom Apartment
- First Floor
- Modern Development
- Private Road
- Close to Chislehurst Railway Station
- Allocated Parking
- Unfurnished
- Available Now

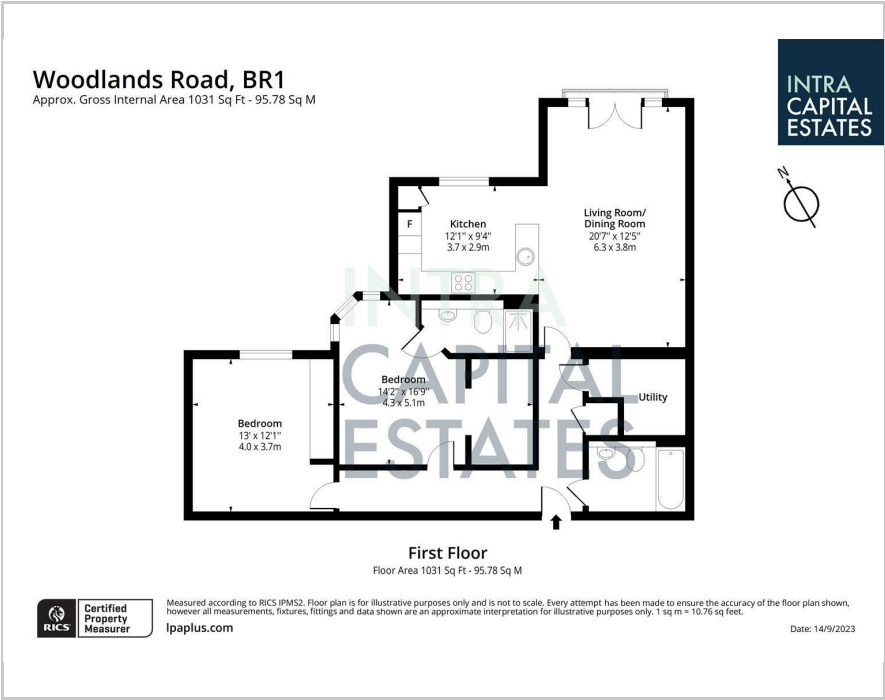
### Viewing

Please contact our Intra Capital Estates Office on 0207 183 6676 if you wish to arrange a viewing appointment for this property or require further information.

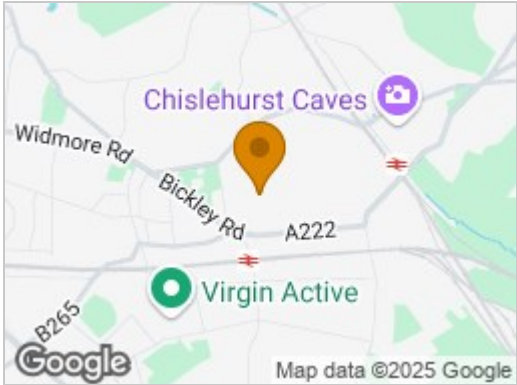




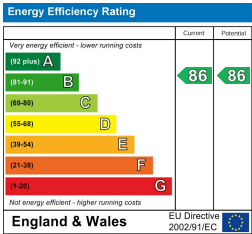
Floor Plan



Area Map



Energy Efficiency Graph



These particulars, whilst believed to be accurate are set out as a general outline only for guidance and do not constitute any part of an offer or contract. Intending purchasers should not rely on them as statements of representation of fact, but must satisfy themselves by inspection or otherwise as to their accuracy. No person in this firms employment has the authority to make or give any representation or warranty in respect of the property.

INTRA-CAPITAL ESTATES

Paddington Works, 8 Hermitage Street, London, W2 1BE  
Tel: 0207 183 6676 Email: info@intra-capital.co.uk  
www.intra-capital.co.uk

Intra-Capital Estates is a trading name of Intra Capital Estates Limited, a private limited company registered in England and Wales.  
Registered number: 11840427. VAT registration number: 31763281. Registered office Paddington Works, 8 Hermitage Street, London, W2 1BE.

MODERN APPROACH  
TRADITIONAL VALUES

