



Mortimer Crescent , London, NW6

Guide price £385,000

Nestled within the enclave of Hillsborough Court on Mortimer Crescent, this two-bedroom flat offers a blend of history and contemporary living. The building's Neo-Tudor facade harks back to a bygone era, with literary connections to George Orwell, enhancing the property's unique character.

The interior boasts an open-plan kitchen and reception room and two double bedrooms. With communal heating and hot water incorporated in the service charge, comfort is assured year-round.

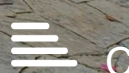
This flat is graced by a communal garden, providing a tranquil oasis amidst the urban landscape. Conveniently located just a half-mile stroll from Kilburn Park and Kilburn High Road stations, connectivity is a breeze.

Whether you're an investor or looking for a place to call home, this property is currently tenanted with flexible arrangements, offering potential for immediate rental income or vacant possession. Contact us to explore the tenancy specifics and seize this great London living opportunity.

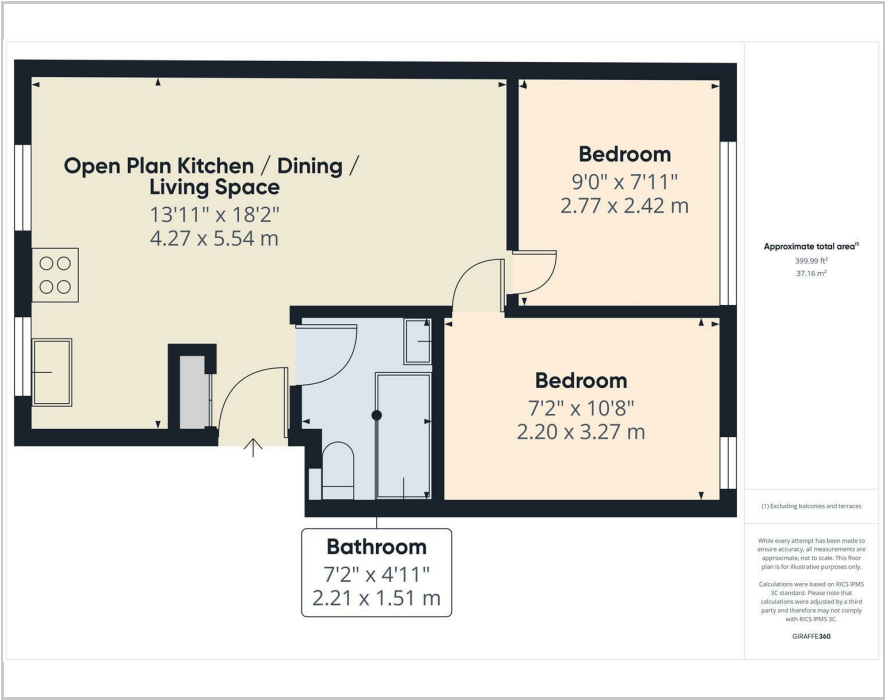
- Two Double Bedrooms
- Porter
- Hot Water and Heating incl. in Service Charge
- Share of Freehold
- Suits Owner/Occupier or Investor

Viewing

Please contact our Intra Capital Estates Office on 0207 183 6676 if you wish to arrange a viewing appointment for this property or require further information.



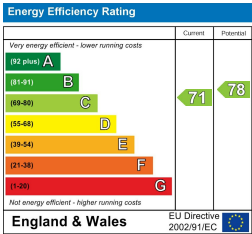
Floor Plan



Area Map



Energy Efficiency Graph



These particulars, whilst believed to be accurate are set out as a general outline only for guidance and do not constitute any part of an offer or contract. Intending purchasers should not rely on them as statements of representation of fact, but must satisfy themselves by inspection or otherwise as to their accuracy. No person in this firm's employment has the authority to make or give any representation or warranty in respect of the property.

INTRA-CAPITAL ESTATES

Paddington Works, 8 Hermitage Street, London, W2 1BE
Tel: 0207 183 6676 Email: info@intra-capital.co.uk
www.intra-capital.co.uk

Intra-Capital Estates is a trading name of Intra Capital Estates Limited, a private limited company registered in England and Wales.
Registered number: 11840427. VAT registration number: 31763281. Registered office Paddington Works, 8 Hermitage Street, London, W2 1BE.

MODERN APPROACH
TRADITIONAL VALUES

