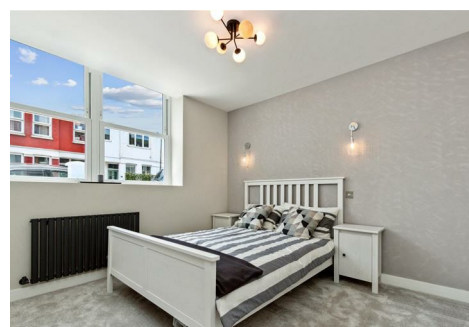
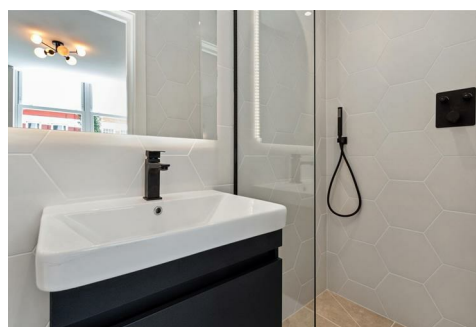


# C JAMES & CO - TOOTING

SALES AND LETTINGS SPECIALISTS



## 20 Coverton Road, Tooting, SW17 0QL Offers in the region of £650,000

Welcome to this charming three-bedroom Victorian, garden flat located on the desirable Coverton Road in Tooting. This beautifully presented property boasts a modern kitchen and bathroom, perfect for contemporary living while retaining the character of its Victorian heritage. As you step into this delightful flat, you are greeted by a spacious reception room, ideal for entertaining guests or simply relaxing with your loved ones. The sliding doors from the sitting room open up to a lovely blank canvas garden, offering a seamless blend of indoor and outdoor living spaces.

With three double bedrooms, there is ample space for a growing family or for those who require a home office or guest room. The property's 893 sq ft layout provides a comfortable and practical living space, ensuring there is room for everyone to enjoy.

Situated on the ground floor, this flat offers convenience and easy access, making it suitable for individuals of all ages. Whether you are looking to enjoy a peaceful evening in the garden or explore the vibrant Tooting, this property offers the best of both worlds.

Don't miss the opportunity to make this Victorian gem your new home. Contact us today to arrange a viewing and experience the charm of Coverton Road for yourself.

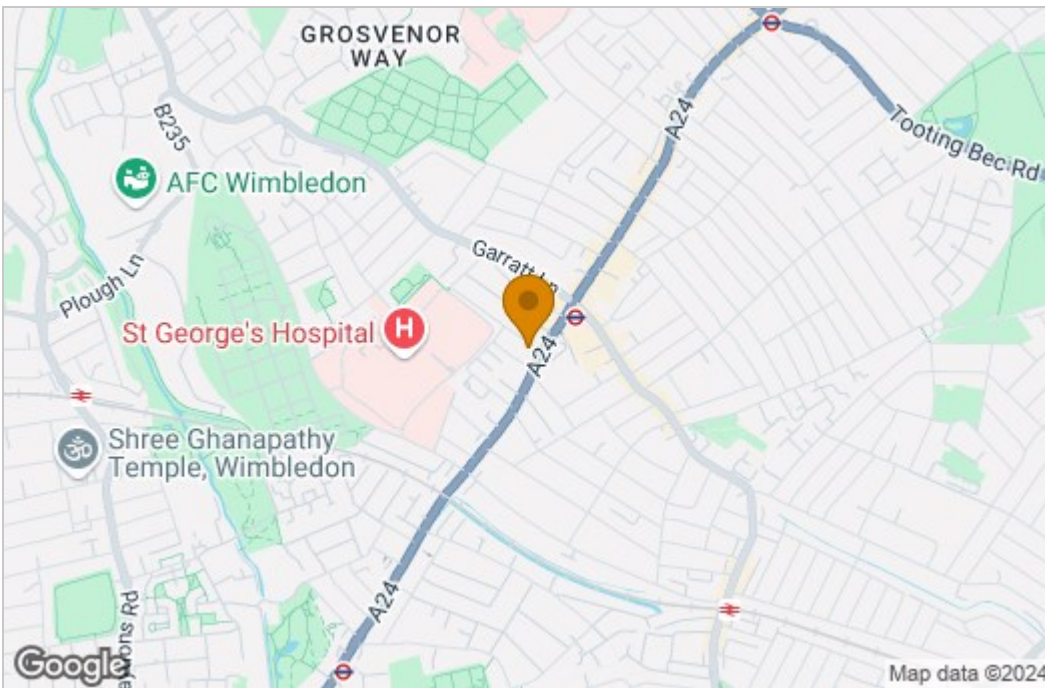
Wandsworth Council Band C, £854.35pa  
Share of Freehold, 999 year lease



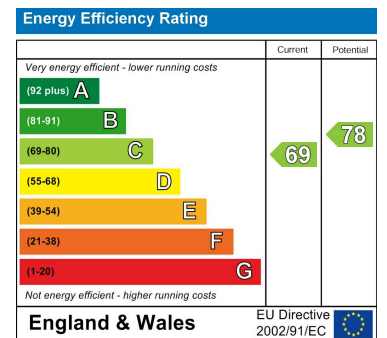
# Floor Plan



# Area Map



# Energy Efficiency Graph



These particulars, whilst believed to be accurate are set out as a general outline only for guidance and do not constitute any part of an offer or contract. Intending purchasers should not rely on them as statements of representation of fact, but must satisfy themselves by inspection or otherwise as to their accuracy. No person in this firm's employment has the authority to make or give any representation or warranty in respect of the property.