

C JAMES & CO - TOOTING

SALES AND LETTINGS SPECIALISTS



17 Bickley Street, London, SW17 9NF

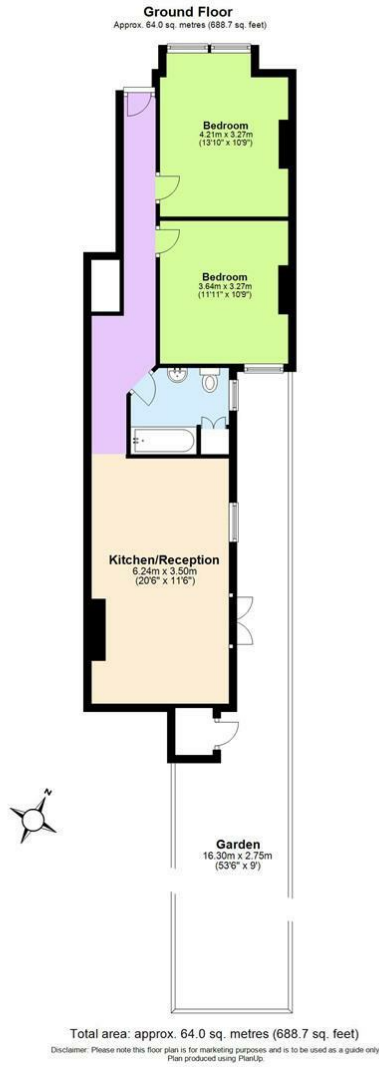
£2,200

Welcome to this charming property on Bickley Street, London! This delightful flat, purpose-built in 1910, boasts a generous 861 sq ft of living space. The property features two spacious double bedrooms,

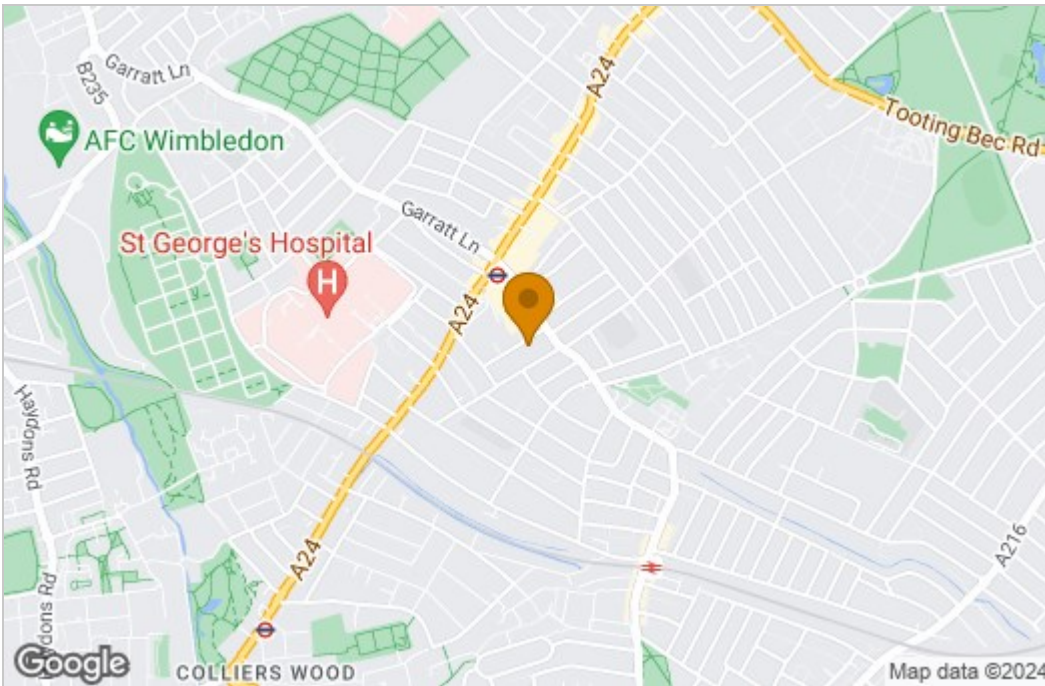
One of the highlights of this property is the large garden, providing a tranquil outdoor space to unwind or host summer gatherings. The recent refurbishment adds a modern touch to the classic architecture, creating a perfect blend of old-world charm and contemporary comfort.

Conveniently located in close proximity to shops and public transport, this property offers the best of both worlds - a peaceful retreat in the heart of bustling Tooting!

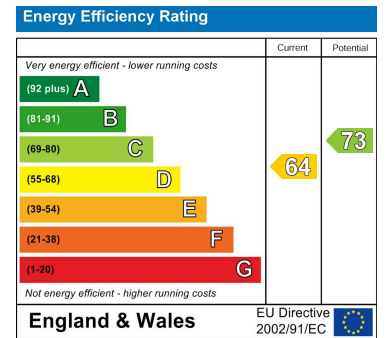
Floor Plan



Area Map



Energy Efficiency Graph



These particulars, whilst believed to be accurate are set out as a general outline only for guidance and do not constitute any part of an offer or contract. Intending purchasers should not rely on them as statements of representation of fact, but must satisfy themselves by inspection or otherwise as to their accuracy. No person in this firm's employment has the authority to make or give any representation or warranty in respect of the property.