

C JAMES & CO - TOOTING

SALES AND LETTINGS SPECIALISTS



51A Gilbey Road, London, SW17 0QH

Asking price £450,000

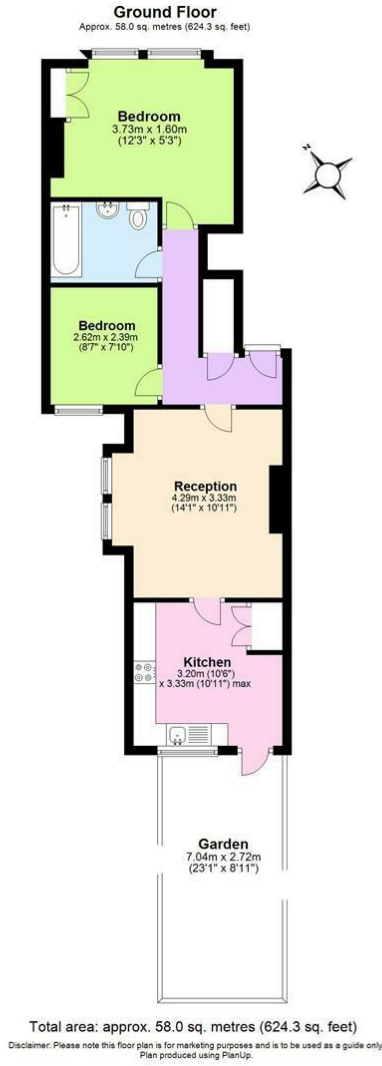
This ground floor two bedroom conversion flat has direct access onto its own private garden via a decent sized kitchen/diner. It will be offered with a 999 year lease and share of the freehold. This property tenanted in excess of the last ten years is now tired and in need of a general refurbishment which is reflected in the asking price.

Located in a popular residential road close to St Georges hospital and within very close proximity of Tooting Broadways 24 hour Northern line tube station. There are a multitude of gastro pubs/bars and restaurants in the vicinity as well as the very popular and trendy Tooting market.

London borough of Wandsworth

Council Tax Band C £812.57 P/A

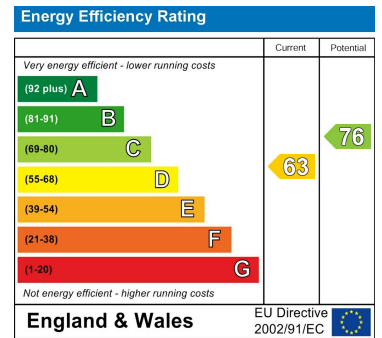
Floor Plan



Area Map



Energy Efficiency Graph



These particulars, whilst believed to be accurate are set out as a general outline only for guidance and do not constitute any part of an offer or contract. Intending purchasers should not rely on them as statements of representation of fact, but must satisfy themselves by inspection or otherwise as to their accuracy. No person in this firm's employment has the authority to make or give any representation or warranty in respect of the property.