



No.1 The Bull Ring

Ludlow, Shropshire

Carter Jonas

No.1 The Bull Ring Ludlow Shropshire SY8 1AD

Historic building set within the heart of Ludlow.

No. 1 The Bull Ring is a Grade II listed property dating from the early 18th Century set over three storeys plus an attic and cellar. The property comprises of traditional brick construction with sash windows and a glazed shop frontage.

Internally, the property benefits from a number of charming features including exposed ceiling beams, trusses and a traditional timber staircase. The property has recently undergone a series of renovation works to convert the upper floors into residential accommodation.



Carter Jonas

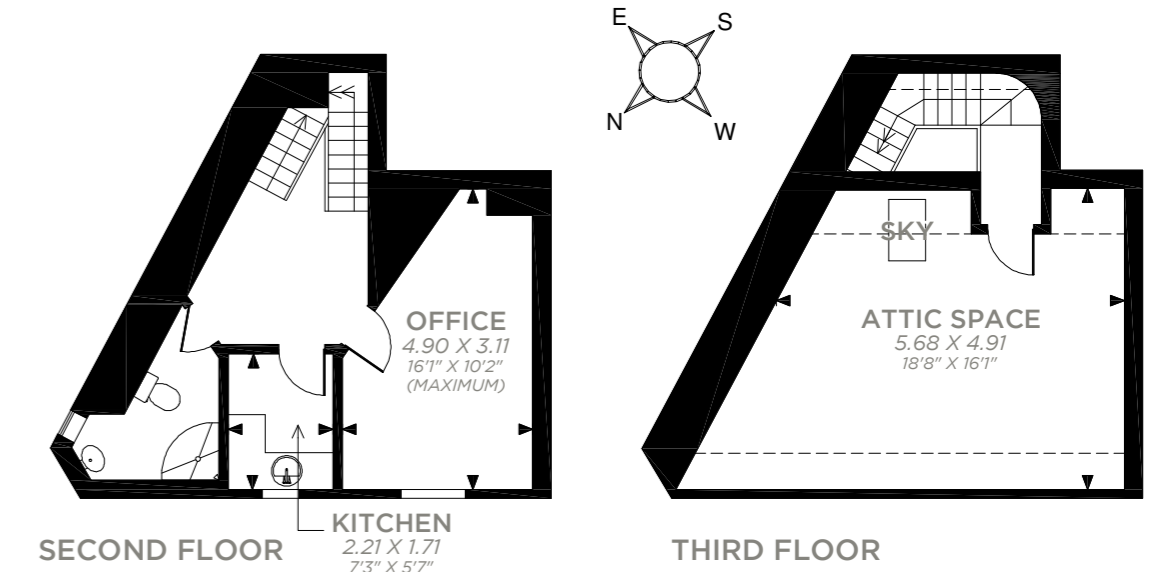
Floor plan

Bull Ring, Ludlow

Approximate gross internal area:
1506 sq ft / 140 sq m

For illustrative purposes only - not to scale.
The position & size of doors, windows, appliances
and other features are approximate only.

☐☐☐☐ Denotes restricted head height



Property

Ground Floor

This area is currently occupied by CW Sellors Fine Jewellers and benefits from traditional wooden flooring, exposed beams, shop fittings and an air conditioning unit.

The cellar and upper floors are accessed directly from the ground floor.

First & Second Floor

Both floors benefit from large sash windows which provide views onto The Bull Ring & King Street. There is a modern shower room suite and fitted kitchen. Exposed beams, stonework and timber floors are present throughout.

Attic

The Attic boasts exposed trusses, beams, brickwork, timber floor and benefits from a velux rooflight.

Cellar

The Cellar has a brick paved floor, whitewashed brick walls and houses the electricity meter and fuse box.

Method of Sale

The property is offered for sale by private treaty.

Tenure & Possession

Freehold with vacant possession upon completion. There is also an opportunity for the purchaser to let the building to CW Sellors Fine Jewellers.

Fixtures & Fittings

Shop fittings & fixtures are subject to negotiation.

Planning

Planning consent was granted under reference (SS/1/05/16746/LB) for the conversion of the upper floors to provide a residential unit. Purchasers must make their own enquiries with the Local Authority.

Services

The Property is connected to mains water, drainage, electricity and gas.

Health & Safety

Please take care when viewing the property and be as vigilant as possible when making an inspection for your own personal safety.

EPC Ratings

Exempt due to Grade II listing status.

Local Authority

Shropshire Council, Shirehall,
Abbey Foregate, SY2 6ND

Viewings

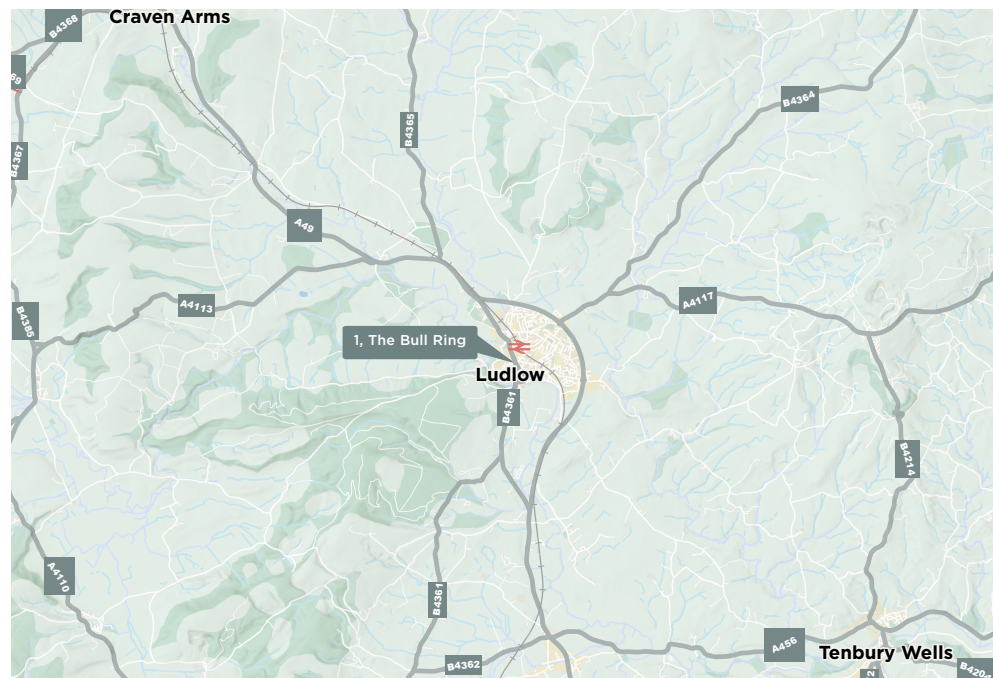
Viewings are strictly by appointment with the selling agent.

Directions

Travelling south into Ludlow on the B4361, take the right hand turn at the traffic lights onto King Street. The Property will be found 35m later on the right hand as The Bull Ring meets King Street.



/// fiction.reform.wove



Shrewsbury

01743 295444 | Shrewsbury.rural@carterjonas.co.uk

01743 213261 | Charlene.sussums-lewis@carterjonas.co.uk

Canon Court North, Abbey Lawn, Shrewsbury, SY2 5DE

Important Information

These particulars are for general information purposes only and do not represent an offer or contract or part of one. Carter Jonas or anyone in their employment has made every attempt to ensure that the particulars and other information provided are as accurate as possible and they are not intended to amount to advice on which you should rely as being factually accurate. Full information which may be relevant to your decision regarding the property can be found on the property listing on carterjonas.co.uk or, (including off market properties) on the brochure or a separately available material information sheet. We would advise you to confirm the details of any material information prior to any offer being submitted. You should not assume that the property has all necessary planning, building regulations or other consents and Carter Jonas has not tested any services, facilities or equipment. Any measurements and distances given are approximate only. Where Carter Jonas has been provided with a floorplan by a third party, we cannot guarantee that the floorplan has been measured in accordance with IPMS. Purchasers must satisfy themselves of all of the aforementioned by independent inspection or otherwise. Our images only represent part of the property as it appeared at the time they were taken and do not represent the furnishings included; these are confirmed in a separate inventory. If you require further information, please contact us.



Carter Jonas

Exclusive UK affiliate of

CHRISTIE'S
INTERNATIONAL REAL ESTATE