



4 Smiths Terrace, Houghton Le Spring, DH5 0JH

Guide price £55,000

Guide Price £55,000+

Moovd Online Property Auctions are delighted to offer For Sale via Option A – Unconditional Online Auction on the 26th February 2026, this smartly presented two bedroom terrace.

The property is a readymade BTL investment with a potential rent of £600 PCM, yielding 13.90% on the advertised Guide Price and an EPC rating of D!

The accommodation on offer briefly comprises: entrance hallway leading into a central dining room with separate lounge to the front. A rear utility area leads into a fitted kitchen with access into the rear yard and white bathroom WC. To first floor are two double bedrooms and a ladder to a loft room. Externally is a rear yard and outhouse.

Easington Lane offers a range of day to day amenities, on the doorstep. Hetton & Houghton Le Spring are a couple of miles away via excellent road and bus networks and access onto the A690 and further afield via the A1 & A19 corridors.

Smiths Terrace would be the perfect investment for any BTL purchaser and is turn-key ready. Viewings strictly by appointment only.

Hall

Dining Room 13'10" x 9'10" (4.23m x 3.02m)

Lounge 13'1" x 11'9" (3.99m x 3.59m)

Utility

Kitchen 9'7" x 6'8" (2.93m x 2.04m)

Bathroom WC

Landing

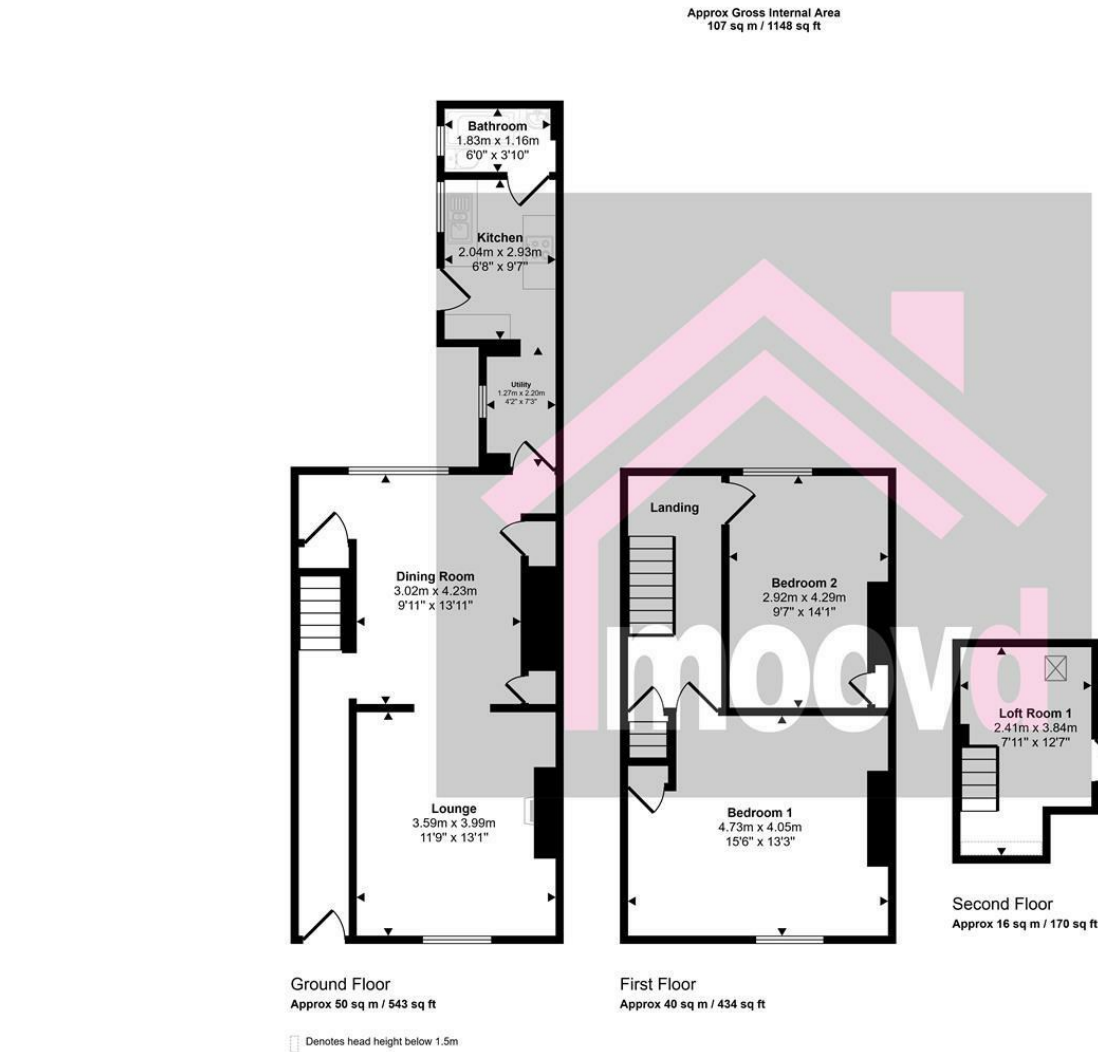
Bedroom 1 15'6" x 13'3" (4.73m x 4.05m)

Bedroom 2 14'0" x 9'6" (4.29m x 2.92m)

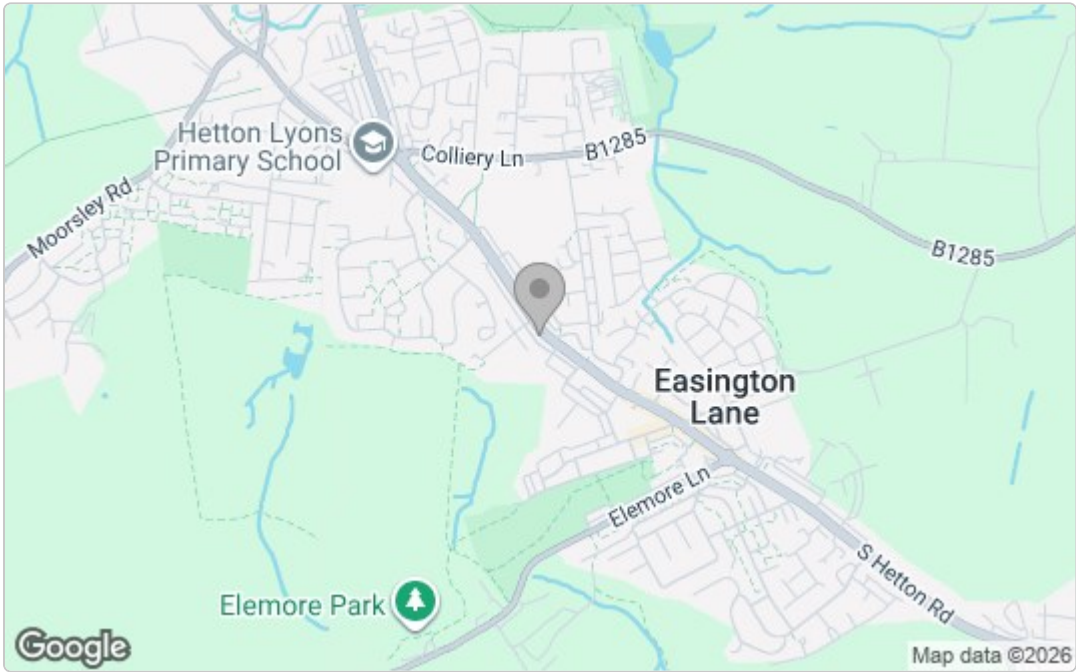
Loft Room 12'7" x 9'2" (3.84m x 2.81m)

Externally

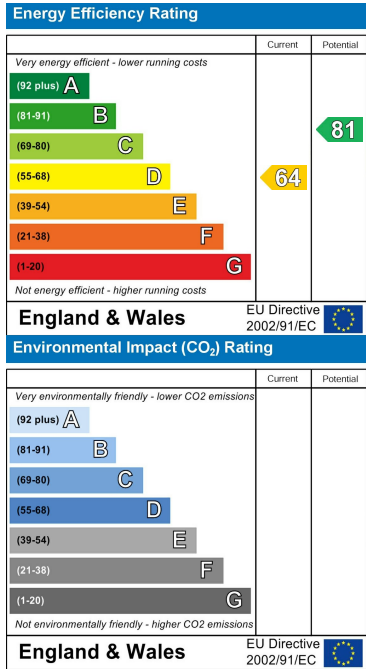
Floor Plan



Area Map



Energy Efficiency Graph



These particulars, whilst believed to be accurate are set out as a general outline only for guidance and do not constitute any part of an offer or contract. Intending purchasers should not rely on them as statements of representation of fact, but must satisfy themselves by inspection or otherwise as to their accuracy. No person in this firms employment has the authority to make or give any representation or warranty in respect of the property.