



10 Queen Bertha Drive

Minster On Sea, Sheerness, ME12 2DN

Asking price £425,000

3

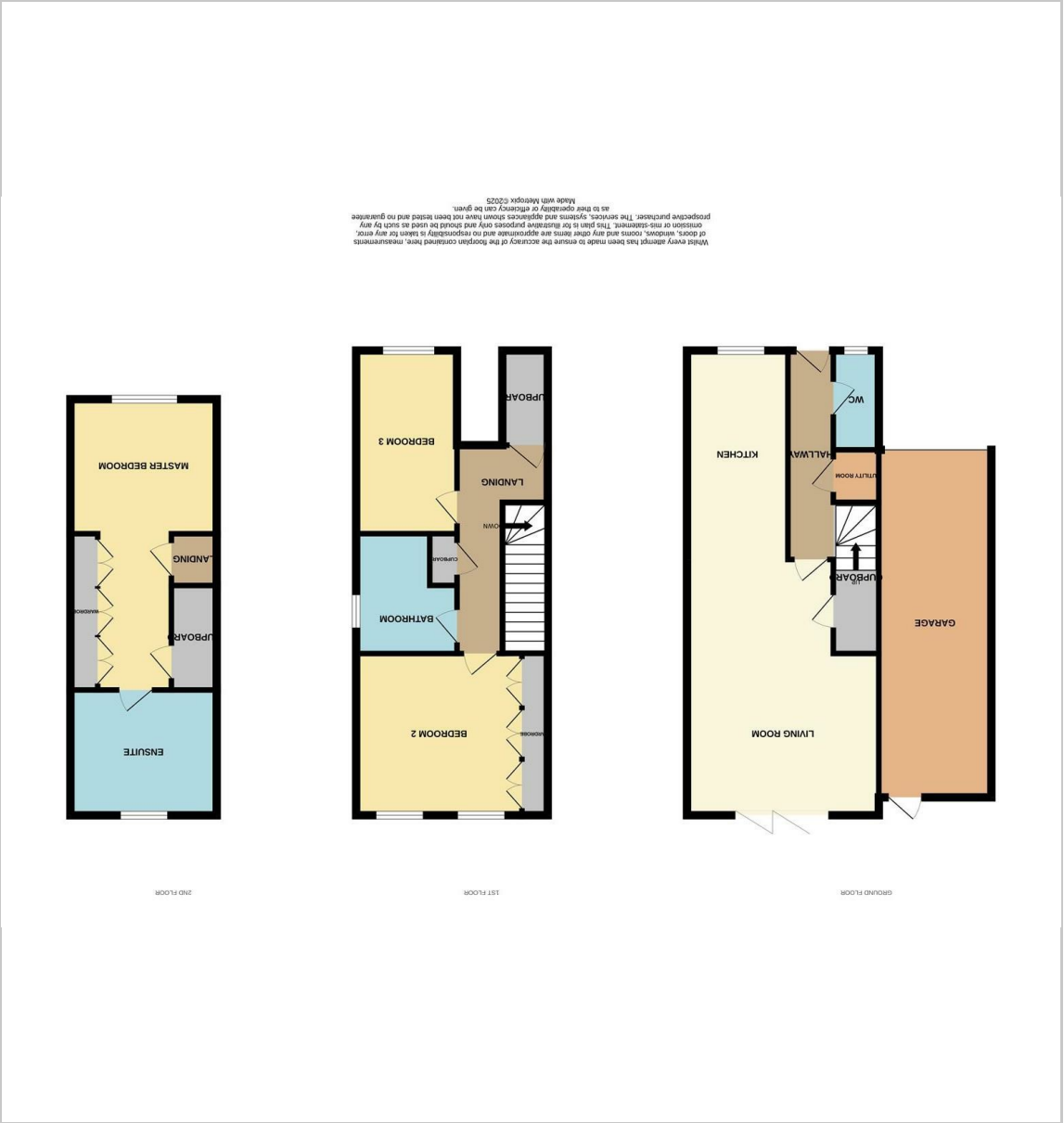
3

1

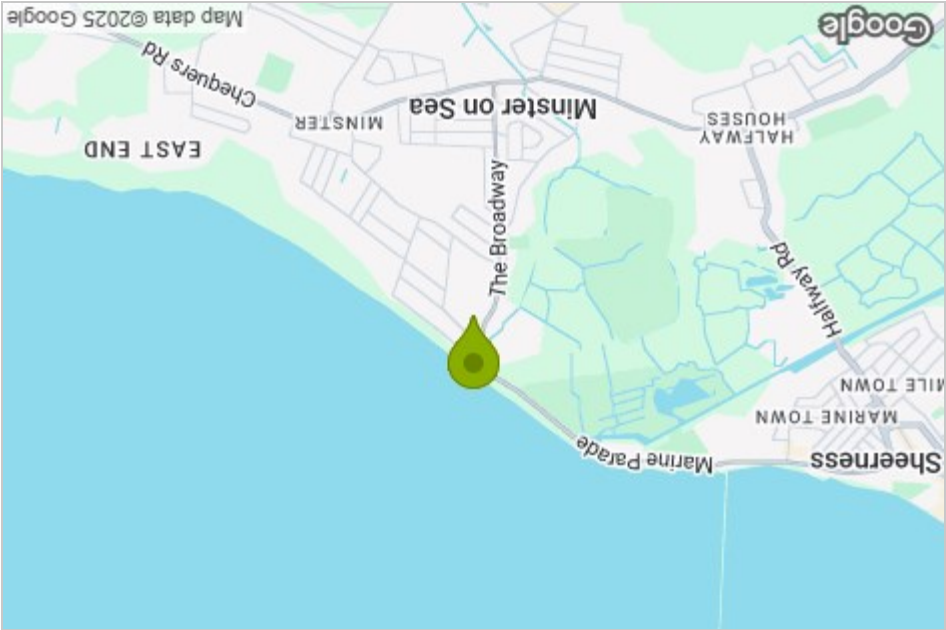
B



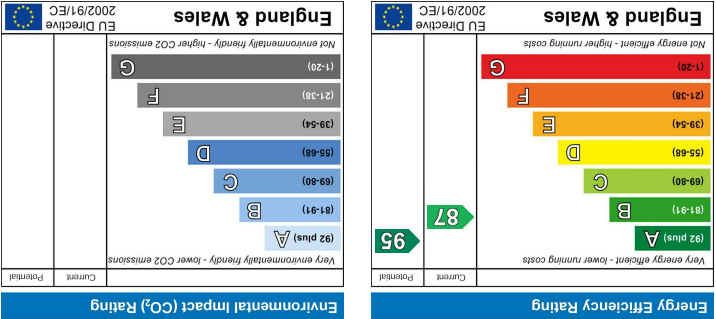
Floor Plan



Area Map



Energy Efficiency Graph



Viewing

Please contact our Isle of Sheppey Office on 01795 666 666 if you wish to arrange a viewing appointment for this property or require further information.

These particulars, whilst believed to be accurate are set out as a general outline only for guidance and do not constitute any part of an offer or contract. Intending purchasers should not rely on them as statements of representation of fact, but must satisfy themselves by inspection or otherwise as to their accuracy. No person in this firm's employment has the authority to make or give any representation or warranty in respect of the property.

James Perry
3 Broadway, Sheerness, Kent, ME12 1AB
Tel: 01795 666 666 Email: sales@james-perry.co.uk www.james-perry.co.uk

10 Queen Bertha Drive



- Large Modern 3 bed Detached House NO CHAIN
- Builders Warranty 7 Year Remaining
- Bi Folding Doors Into The Garden
- Under Floor Heating Throughout
- Air Source Heat Pump
- Whole of Third Floor Master Bedroom with Ensuite
- Well Maintained Garden
- Built in Wardrobes In Bedrooms
- Integrated Appliances
- Charging Point For Electric Car

Description

£425,000 NO CHAIN

Nestled on the desirable Queen Bertha Drive, this stunning modern detached house, built in 2022, offers a perfect blend of contemporary living and coastal charm. With three spacious bedrooms and three well-appointed bathrooms, this property is ideal for families or those seeking extra space.

The highlight of this home is undoubtedly the entire third floor, which is dedicated to a luxurious master bedroom complete with an ensuite bathroom. This private retreat provides a serene escape, allowing you to unwind in comfort. The additional bedrooms are generously sized, ensuring ample room for family or guests.

The ground floor features a welcoming reception room, perfect for entertaining or relaxing with loved ones. The design is both stylish and functional, catering to the needs of modern living. The Bi folding doors open in to the well maintained enclosed rear garden.

For those with electric vehicles, the property includes a garage equipped with a charging port, adding convenience to your daily routine. The garage is operated with electric door.

Location is key, and this house is just a stone's throw from the beach, offering the perfect opportunity for seaside strolls and enjoying the fresh coastal air. Furthermore, it is conveniently situated close to schools and local amenities, making it an ideal choice for families.

In summary, this large, modern three-bedroom detached house on Queen Bertha Drive is a rare find, combining luxury, practicality, and an enviable location. Don't miss the chance to make this exceptional property your new home.

Minster On Sea, Sheerness, ME12 2DN

