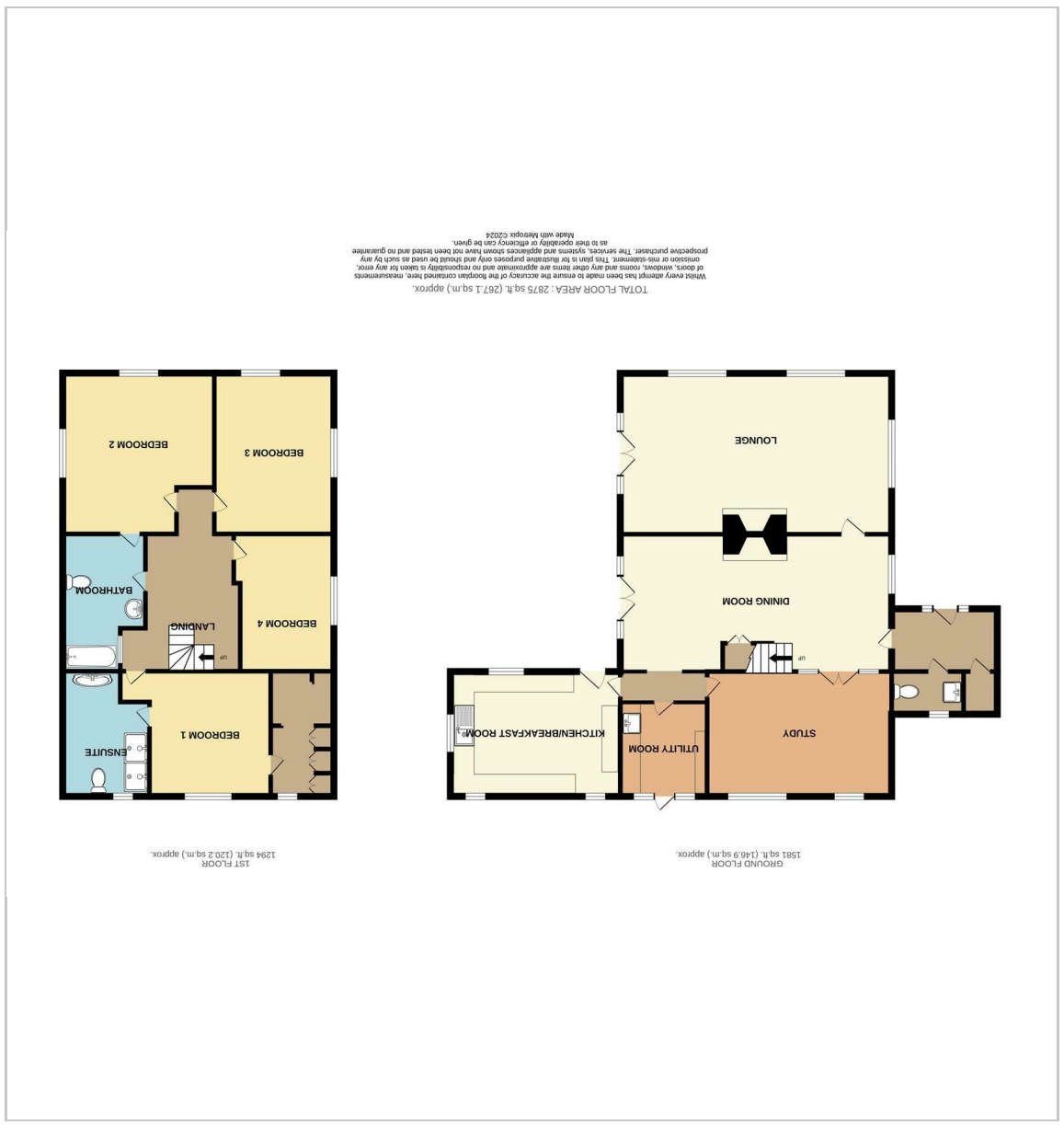


Greenways Eastchurch Road
 Eastchurch, Sheerness, ME12 4HW
Asking price £850,000

4 2 3



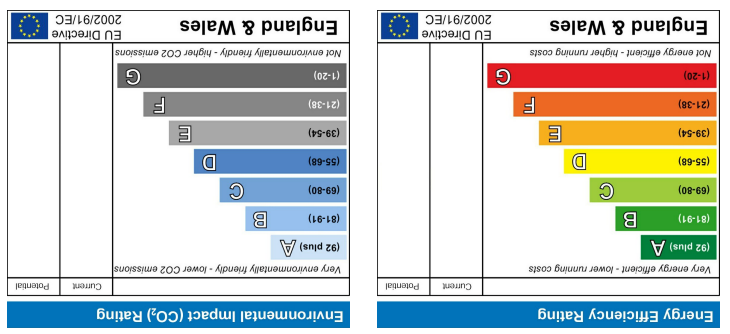
Floor Plan



Area Map



Energy Efficiency Graph



Viewing

Please contact our Isle of Sheppey Office on 01795 666 666 if you wish to arrange a viewing appointment for this property or require further information.

These particulars, whilst believed to be accurate are set out as a general outline only for guidance and do not constitute any part of an offer or contract. Intending purchasers should not rely on them as statements of representation of fact, but must satisfy themselves by inspection or otherwise as to their accuracy. No person in this firm's employment has the authority to make or give any representation or warranty in respect of the property.

Greenways Eastchurch Road

- Stunning 4 Bed Detached House
- Large Plot of 1/2 Acre
- Amazing Panoramic Countryside Views
- Workshop/Barn
- Easy Access To And From The Island
- Great Sized Outdoor Swimming Pool
- Double Gated Entrance Driveway For Multiple Cars
- Master En Suite With Walk In Wardrobe
- Secluded Location
- This Is One Not To Be Missed!

Description

Nestled in the charming Eastchurch area of Sheerness, this delightful 4-bedroom detached house offers a tranquil retreat with stunning countryside views. The property boasts a spacious driveway with double gates, providing multiple parking for both family and friends.

Imagine basking in the sun by the large outdoor swimming pool, perfect for relaxing on lazy weekends or entertaining guests. Additionally, the 1/2 acre plot features a workshop and barn, ideal for those with hobbies or in need of extra storage space.

Inside the property on the ground floor there is a spacious lounge and dining room with a study for the avid reader as well as a modern kitchen and separate utility room. Upstairs the house offers four generously sized double bedrooms with the a master en suite, ensuring plenty of room for a growing family or visiting guests with a tasteful main bathroom.

With its picturesque surroundings and abundance of space, this property on Eastchurch Road is a true gem waiting to be discovered.

Eastchurch, Sheerness, ME12 4HW

