

15 Plover Road
 Minster On Sea, Sheerness, ME12 3GA
 Offers in excess of £325,000

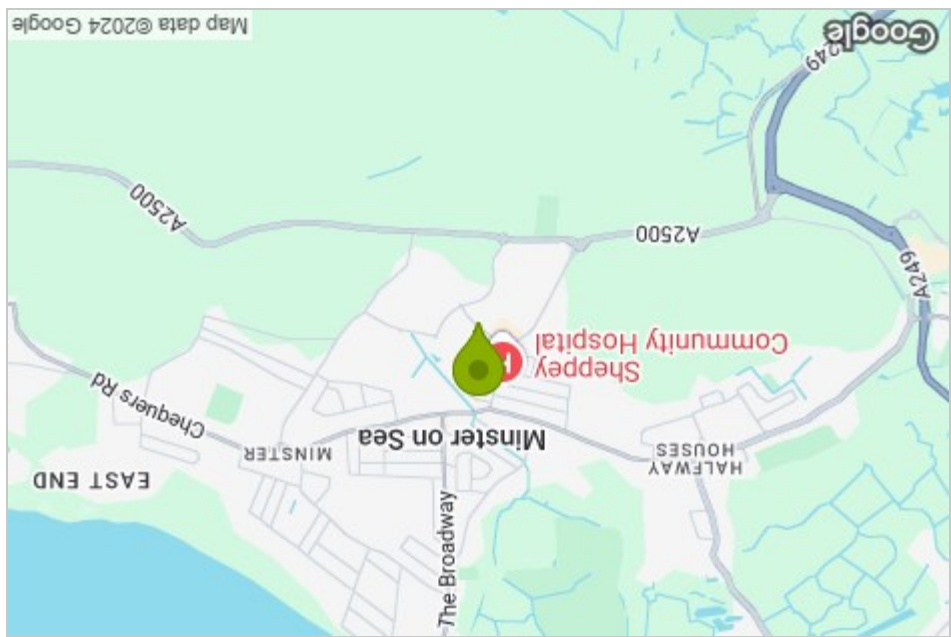
4 2 2 C



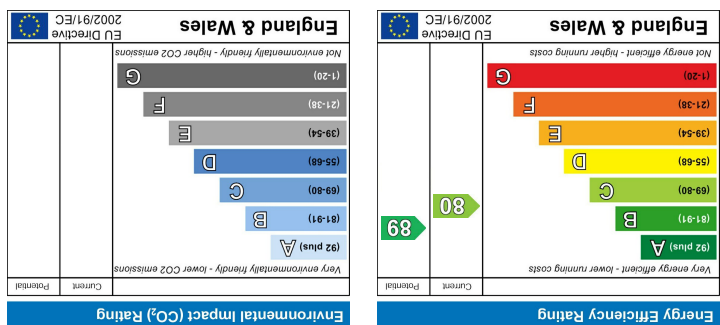
Floor Plan



Area Map



Energy Efficiency Graph

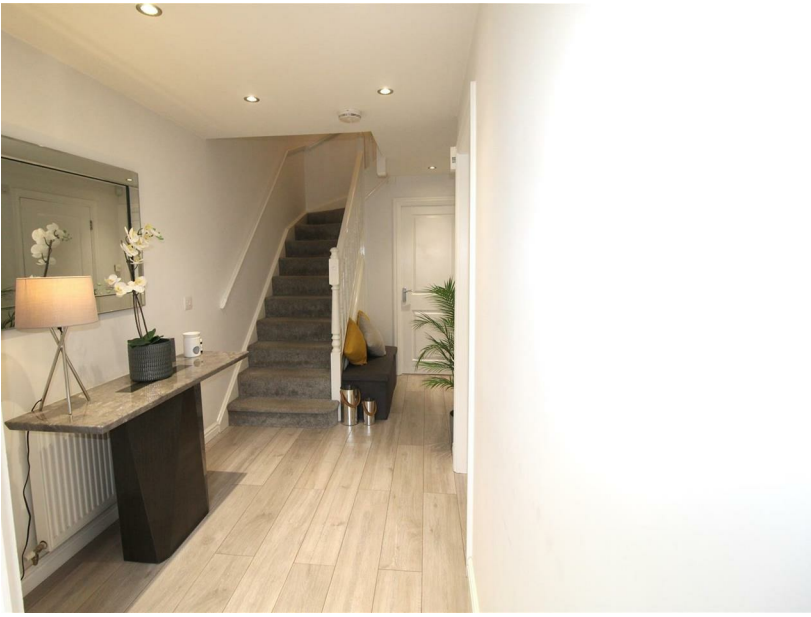


Viewing

Please contact our Isle of Sheppey Office on 01795 666 666 if you wish to arrange a viewing appointment for this property or require further information.

These particulars, whilst believed to be accurate are set out as a general outline only for guidance and do not constitute any part of an offer or contract. Intending purchasers should not rely on them as statements of representation or fact, but must satisfy themselves by inspection or otherwise as to their accuracy. No person in this firm's employment has the authority to make or give any representation or warranty in respect of the property.

15 Plover Road



- 4 BEDROOM SEMI DETACHED
- 3 STOREY MODERN LIVING
- GAS CENTRAL HEATING
- INTERGRATED MODERN APPLIANCES
- CLOSE TO LOCAL AMENITIES, SCHOOLS AND HOSPITAL
- SOUGHT AFTER MINSTER AREA
- PRIVATE PARKING
- JULIET BALCONY
- WALK IN WARDROBE
- THIS ONE IS NOT TO BE MISSED!

Description

James Perry welcome you to this stylish 4 Bed property located on Plover Road in the picturesque Minster On Sea, Sheerness. This modern house boasts ample space with 2 reception rooms, perfect for entertaining guests or simply relaxing with your loved ones.

With 4 bedrooms spread across 3 storeys, there is plenty of room for a growing family or for those who enjoy having a home office or hobby room. The property also features 2 bathrooms, ensuring convenience and comfort for all residents.

One of the highlights of this property is the walk-in wardrobe, providing a touch of luxury and ample storage space for all your clothing and accessories. Imagine starting your day in a beautifully organized space designed just for you.

Conveniently situated close to local amenities, you'll have everything you need right at your doorstep. Whether it's a quick grocery run or a leisurely stroll to a nearby café, this location offers both convenience and a sense of community.

Parking will never be an issue with 2 private parking spaces directly located at rear garden gate, ensuring that you always have a secure place to park your vehicles.

Don't miss out on the opportunity to make this 4-bed semi-detached house your new home. Book a viewing today and envision the possibilities that this property holds for you and your family.

Minster On Sea, Sheerness, ME12 3GA

