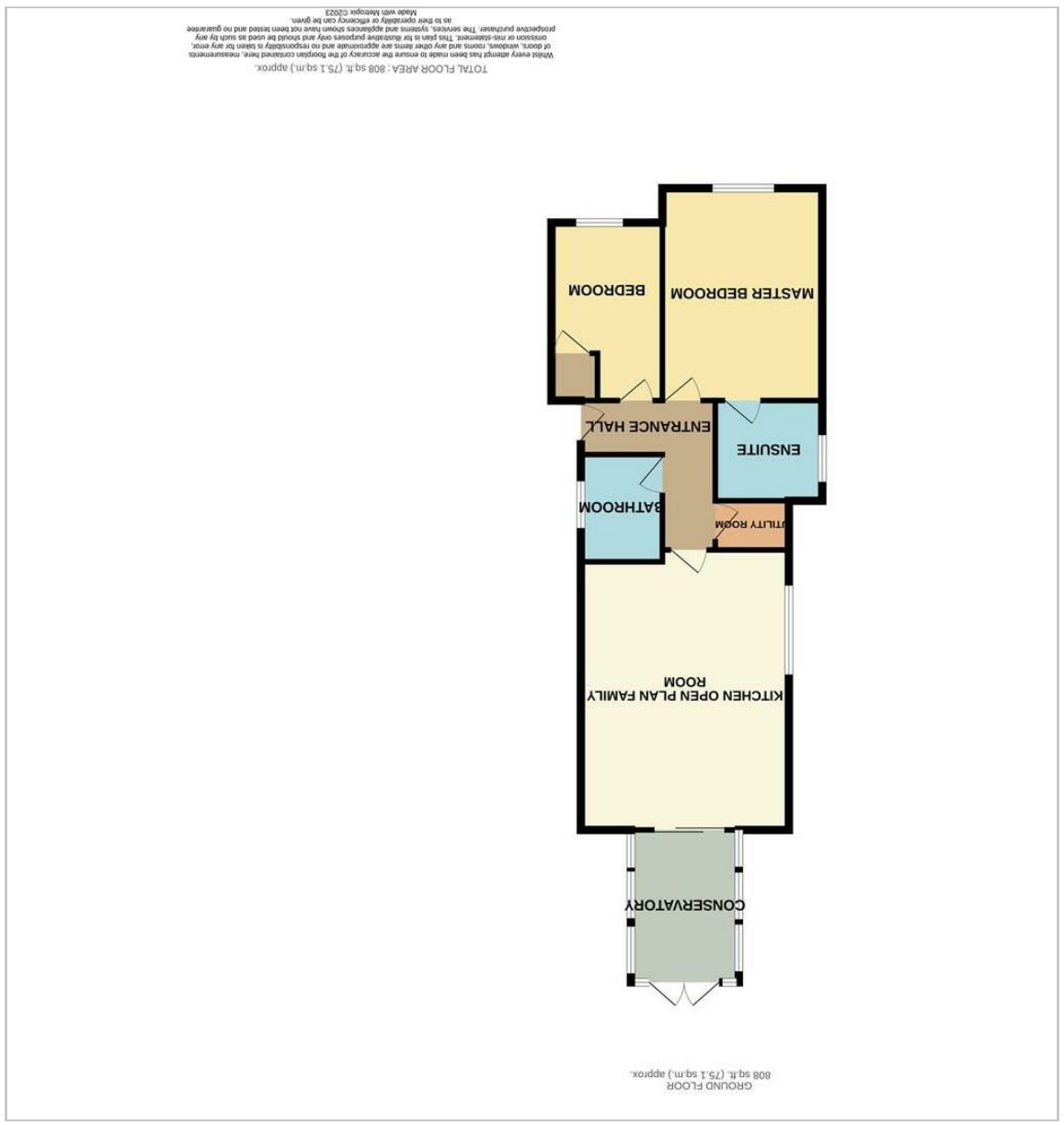


Saxon Avenue  
 Minster On Sea, Sheerness, ME12 2RP  
 Asking price £375,000

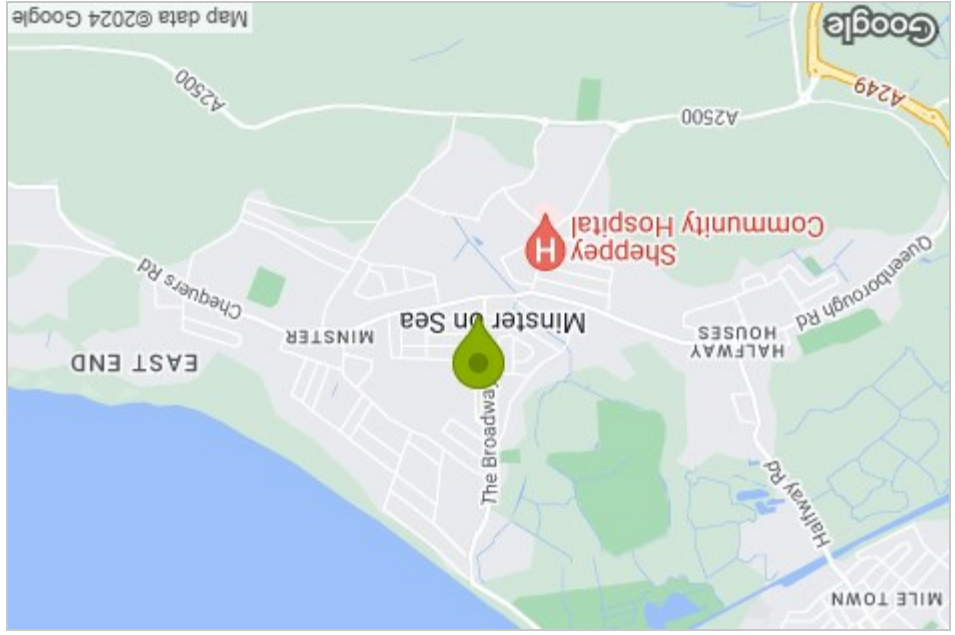
2 2 1 A



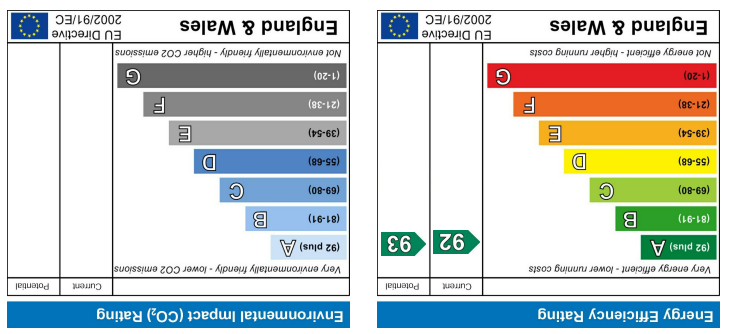
Floor Plan



Area Map



Energy Efficiency Graph

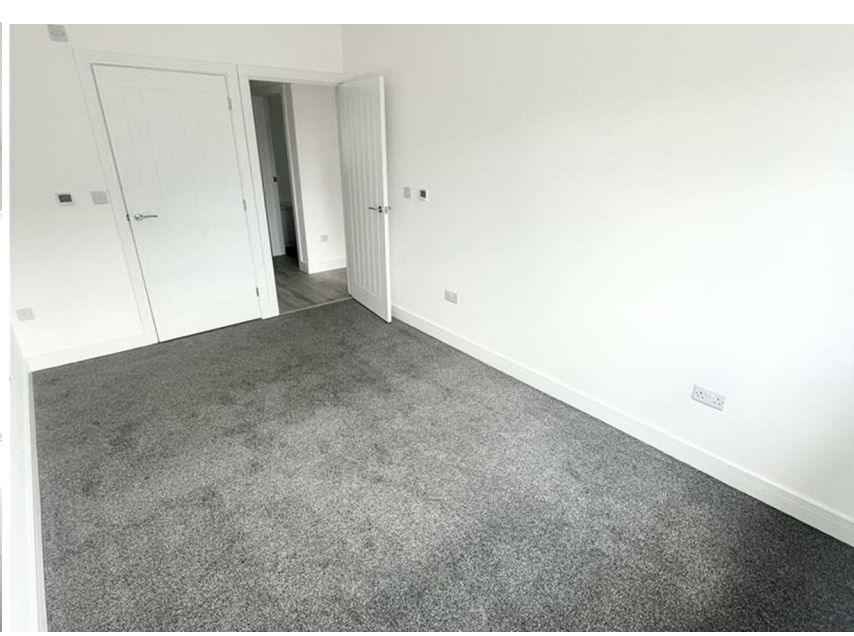


Viewing

Please contact our Isle of Sheppey Office on 01795 666 666 if you wish to arrange a viewing appointment for this property or require further information.

These particulars, whilst believed to be accurate are set out as a general outline only for guidance and do not constitute any part of an offer or contract. Intending purchasers should not rely on them as statements of representation of fact, but must satisfy themselves by inspection or otherwise as to their accuracy. No person in this firm's employment has the authority to make or give any representation or warranty in respect of the property.

# Saxon Avenue



- Brand new Bungalow
- Electric car charging point
- Master Bedroom ensuite
- Conservatory
- Open plan living space
- An A EPC Rating
- Under floor Heating
- Superb Location close to all amenities
- Low maintenance garden
- Chain Free & Ready to move in

## Description

Welcome to this charming new build bungalow located on Saxon Avenue in the picturesque Minster On Sea, Sheerness. This delightful property boasts from an open plan living, two bedrooms, and two bathrooms, offering ample space for comfortable living.

Situated in a prime location, this detached bungalow is perfect for those seeking a peaceful retreat close to local amenities. Imagine taking a short stroll to the nearby blue flag beach, enjoying the serene surroundings and calming sea views.

One of the standout features of this property is the underfloor heating, ensuring warmth and comfort throughout the home. With parking available for up to four vehicles, convenience is at your doorstep.

This new build bungalow is ready to move in, allowing you to settle in and start enjoying the relaxed coastal lifestyle right away. Don't miss out on this fantastic opportunity to own a modern home in a sought-after location.

Minster On Sea, Sheerness, ME12 2RP

