



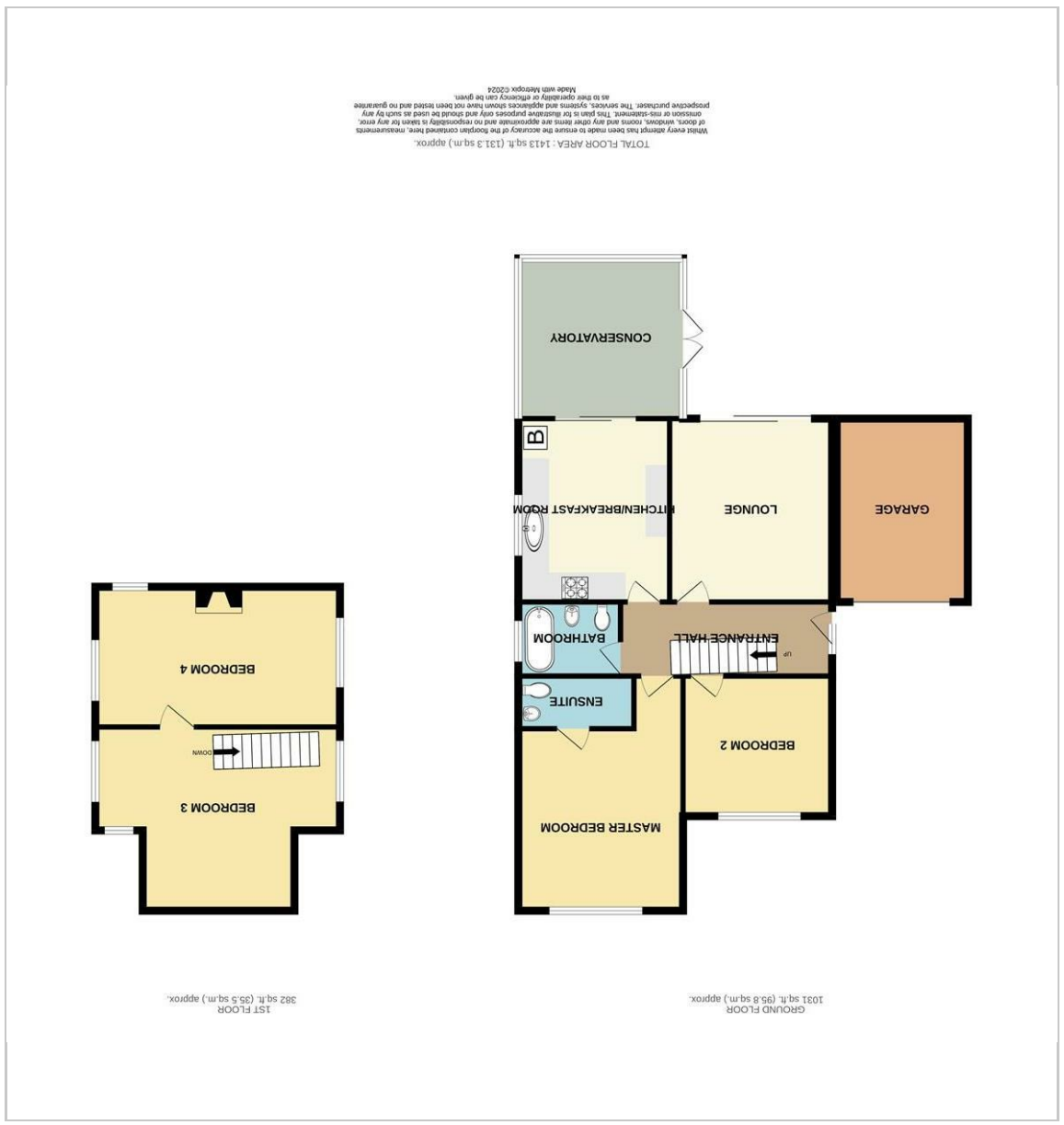
Fingals, 1 Plough Road  
Minster On Sea, Sheerness, ME12 4JD

Offers in the region of £415,000

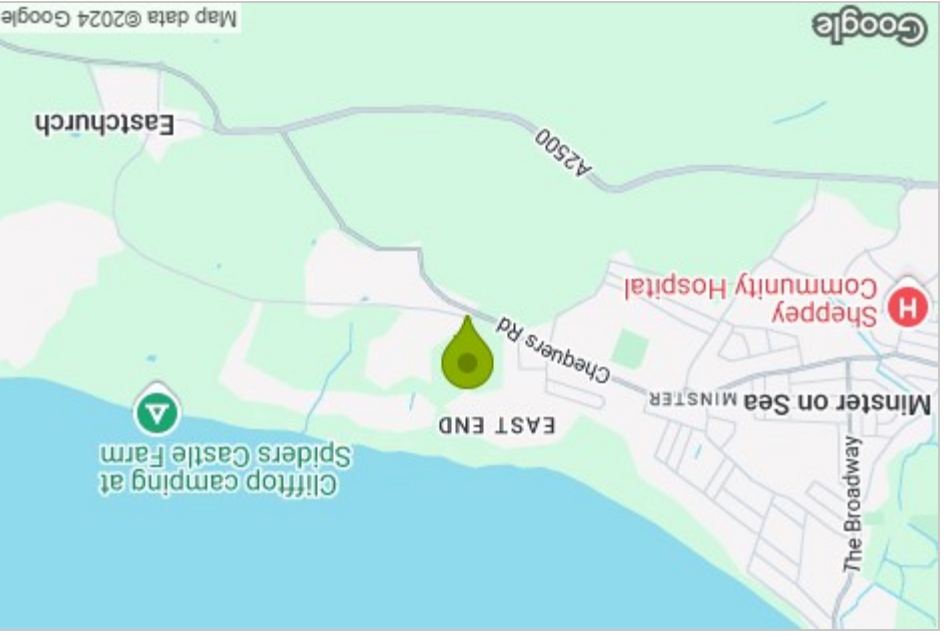
4 2 1 E



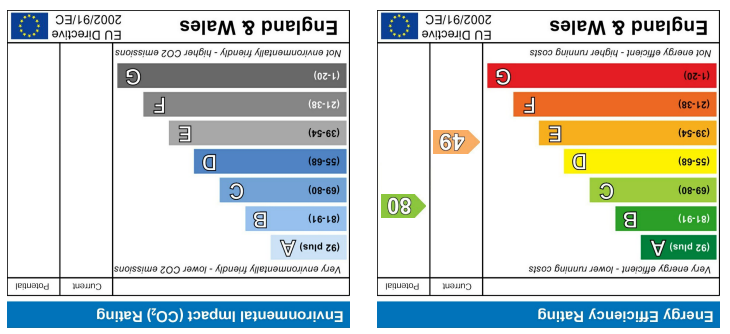
Floor Plan



Area Map



Energy Efficiency Graph



**Viewing**  
Please contact our Isle of Sheppey Office on 01795 666 666 if you wish to arrange a viewing appointment for this property or require further information.

These particulars, whilst believed to be accurate are set out as a general outline only for guidance and do not constitute any part of an offer or contract. Intending purchasers should not rely on them as statements of representation or fact, but must satisfy themselves by inspection or otherwise as to their accuracy. No person in this firm's employment has the authority to make or give any representation or warranty in respect of the property.

# Fingals, 1 Plough Road



- Three Bed
- Detached House
- Short Walk To Local Amenities
- Sea Views
- Double Glazed Throughout
- Council Tax Band D
- Sought After
- Minster On Sea Location
- Well-Maintained Landscaped Gardens
- Parking For Multiple Cars
- Semi Rural Environment
- Viewings Highly Recommended

## Description

James Perry welcome you to this delightful detached house located on Plough Road in the serene Minster On Sea, Sheerness. This well-presented property boasts not only a quiet location but also stunning sea views that will surely captivate your heart.

Upon entering, you are greeted by a large reception/entrance hall, With four good sized bedrooms, there is ample space for the whole family to unwind and make this house a home. The two bathrooms ensure convenience and comfort for all residents. On the ground floor there is also a conservatory leading into the spacious kitchen. First Floor has bedrooms 3 and 4.

The highlight of this property is undoubtedly the breath taking sea views that can be enjoyed from various vantage points within the house. Imagine waking up to the sight of the sun rising over the sea or unwinding in the evening with the calming sound of waves in the background.

Whether you are looking for a peaceful retreat away from the hustle and bustle of city life or a place to create lasting memories with your family, this detached house on Plough Road offers the perfect blend of tranquillity and comfort. Don't miss the opportunity to make this slice of paradise your own.

Minster On Sea, Sheerness, ME12 4JD

