

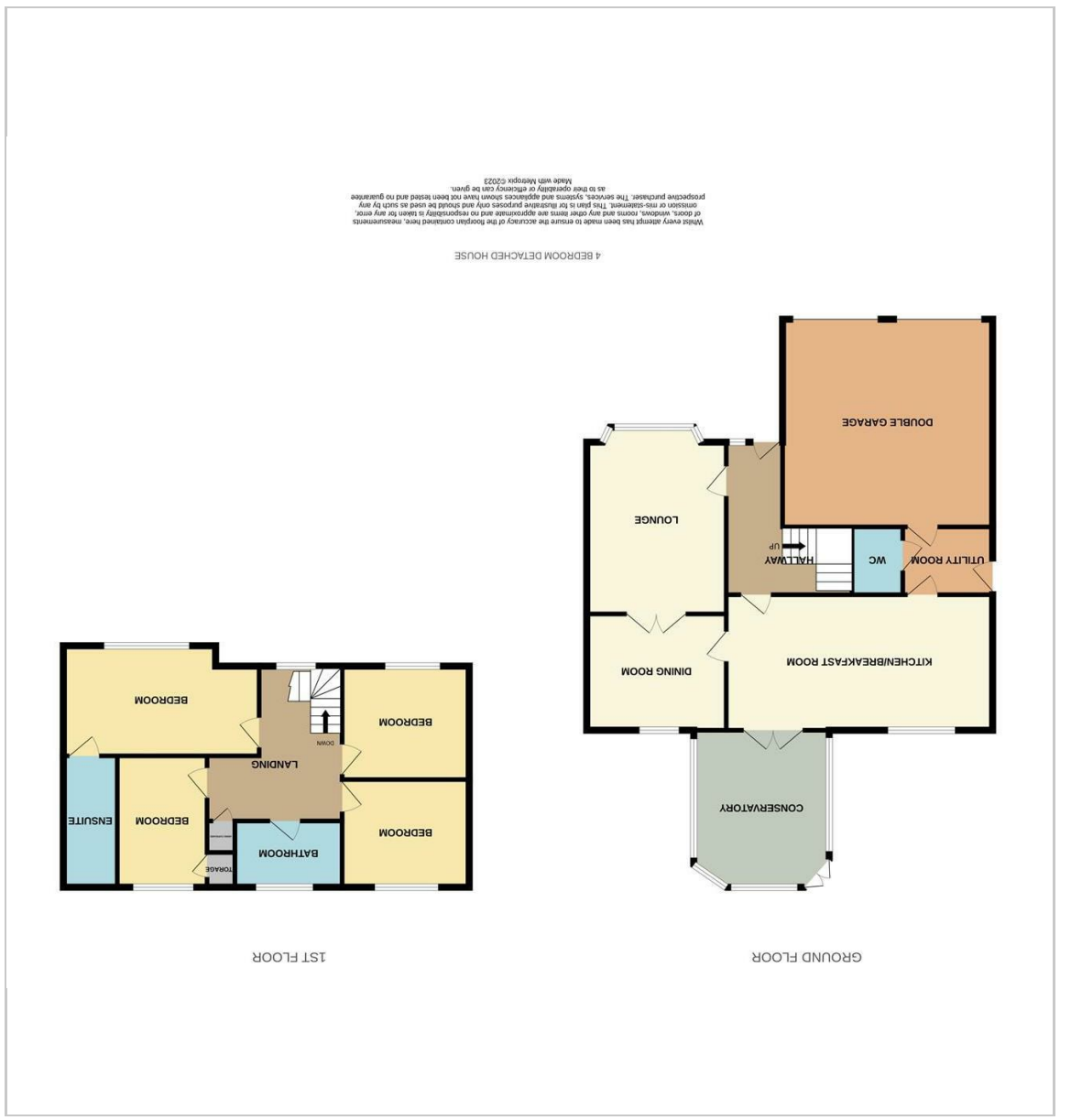


7 Court Tree Drive
 Eastchurch, Sheerness, ME12 4TR
 By auction £440,000

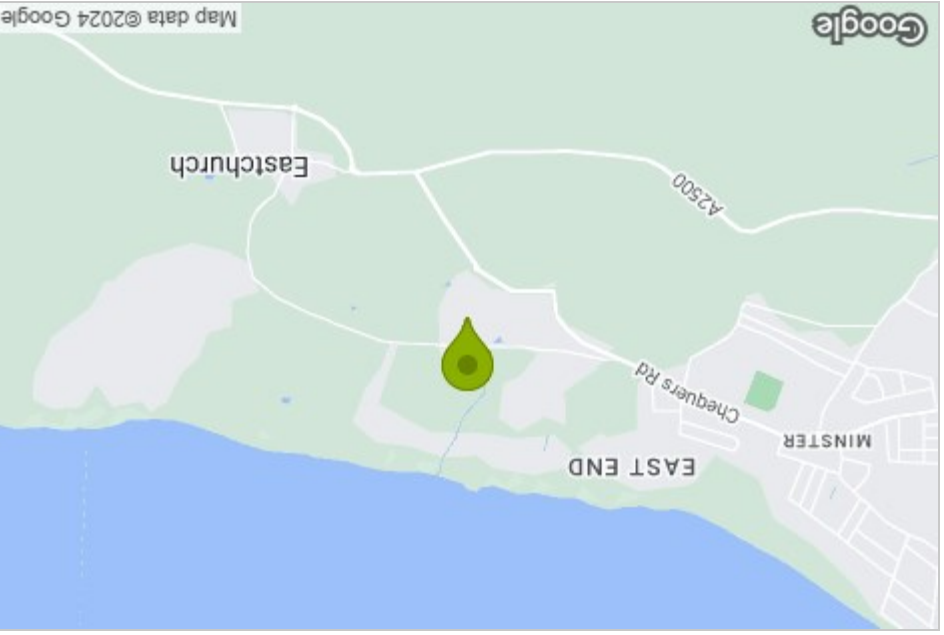
4 2 1 C



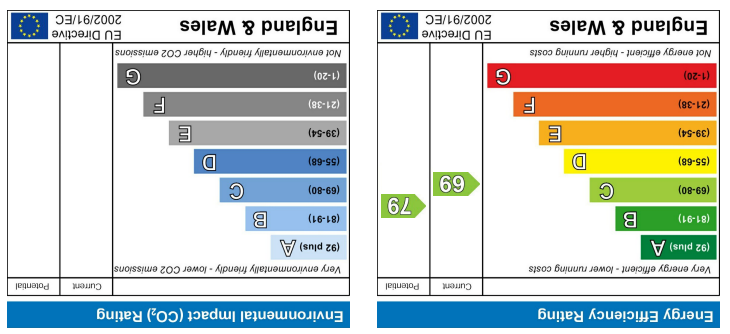
Floor Plan



Area Map



Energy Efficiency Graph

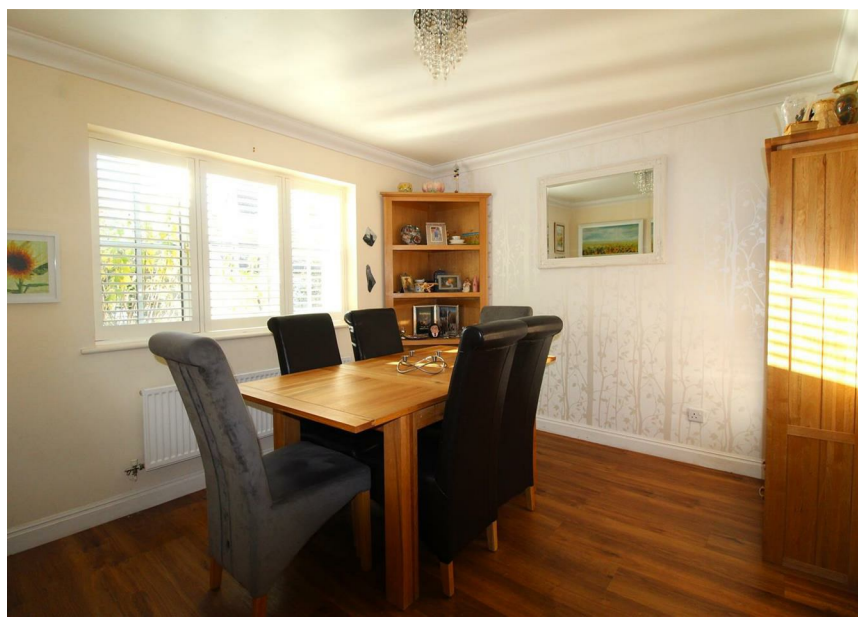


Viewing

Please contact our Isle of Sheppey Office on 01795 666 666 if you wish to arrange a viewing appointment for this property or require further information.

These partners, whilst believed to be accurate are set out as a general outline only for guidance and do not constitute any part of an offer or contract. Intending purchasers should not rely on them as statements of representation of fact, but must satisfy themselves by inspection or otherwise as to their accuracy. No person in this firm's employment has the authority to make or give any representation or warranty in respect of the property.

7 Court Tree Drive



- Being Sold via Secure Sale online bidding. Terms & Conditions apply
- 4 Bed Detached
- Gas Central Heating
- Double Garage
- Ideal Family Home
- Sought After Area Of Kingsborough Manor
- Starting Bid £440,000
- Off Road Parking For Multiple Cars
- Separate Utility Room
- Viewings Recommended

Description

Being Sold via Secure Sale online bidding. Terms & Conditions apply. Starting Bid £440,000

Immediate 'exchange of contracts' available

James Perry Estate Agents are delighted to offer this beautiful 4 bed detached house situated in the popular area of Kingsborough Manor Development in Eastchurch.

To the front exterior of the property there is a large driveway leading to a double garage. On the ground floor there is a good sized living area, a separate dining room and an open plan kitchen/ family room. The ground floor also has a utility room and a downstairs WC. The first floor offers a spacious main bedroom with fitted wardrobes and an en-suite shower room, you also have three double bedrooms and a family bathroom. Externally the property sits on a good size plot, offering an outdoor bbq and hot tub area. Located perfectly to access motorway links, supermarkets, schools and shops or, If you would prefer to leave the car at home there are plenty of stunning countryside walks on your doorstep.

Enquire now: 01795 667777 or email us on sales@james-perry.co.uk

Eastchurch, Sheerness, ME12 4TR

