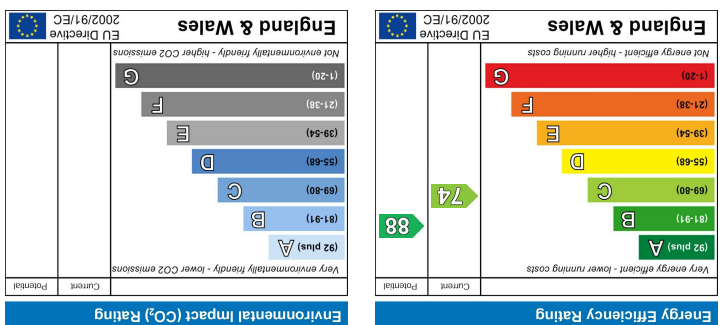


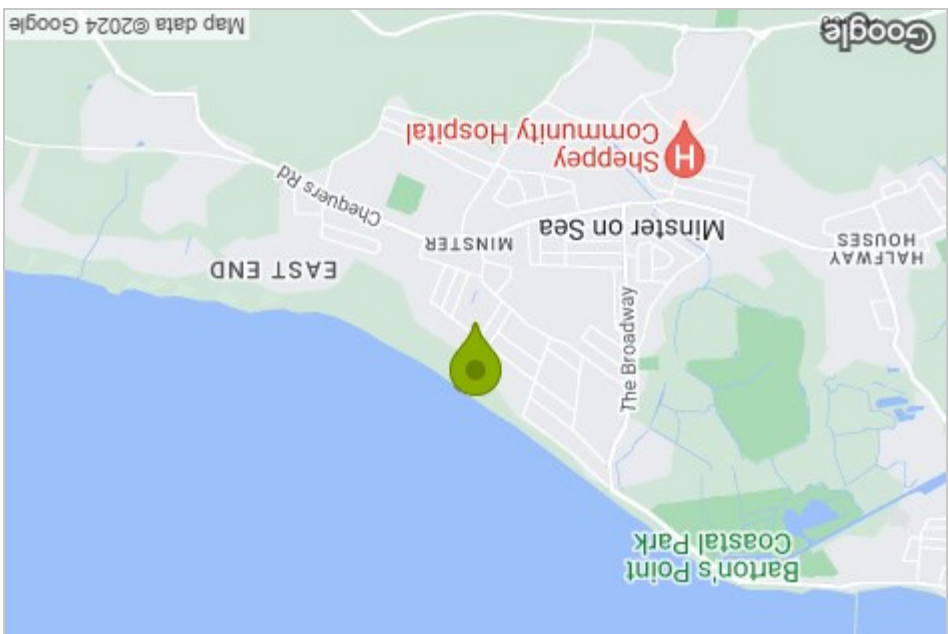
These particulars, whilst believed to be accurate are set out as a general outline only for guidance and do not constitute any part of an offer or contract. Intending purchasers should not rely on them as statements of representation or fact, but must satisfy themselves by inspection or otherwise as to their accuracy. No person in this firm's employment has the authority to make or give any representation or warranty in respect of the property.

Please contact our Isle of Sheppey Office on 01795 666 666 if you wish to arrange a viewing appointment for this property or require further information.

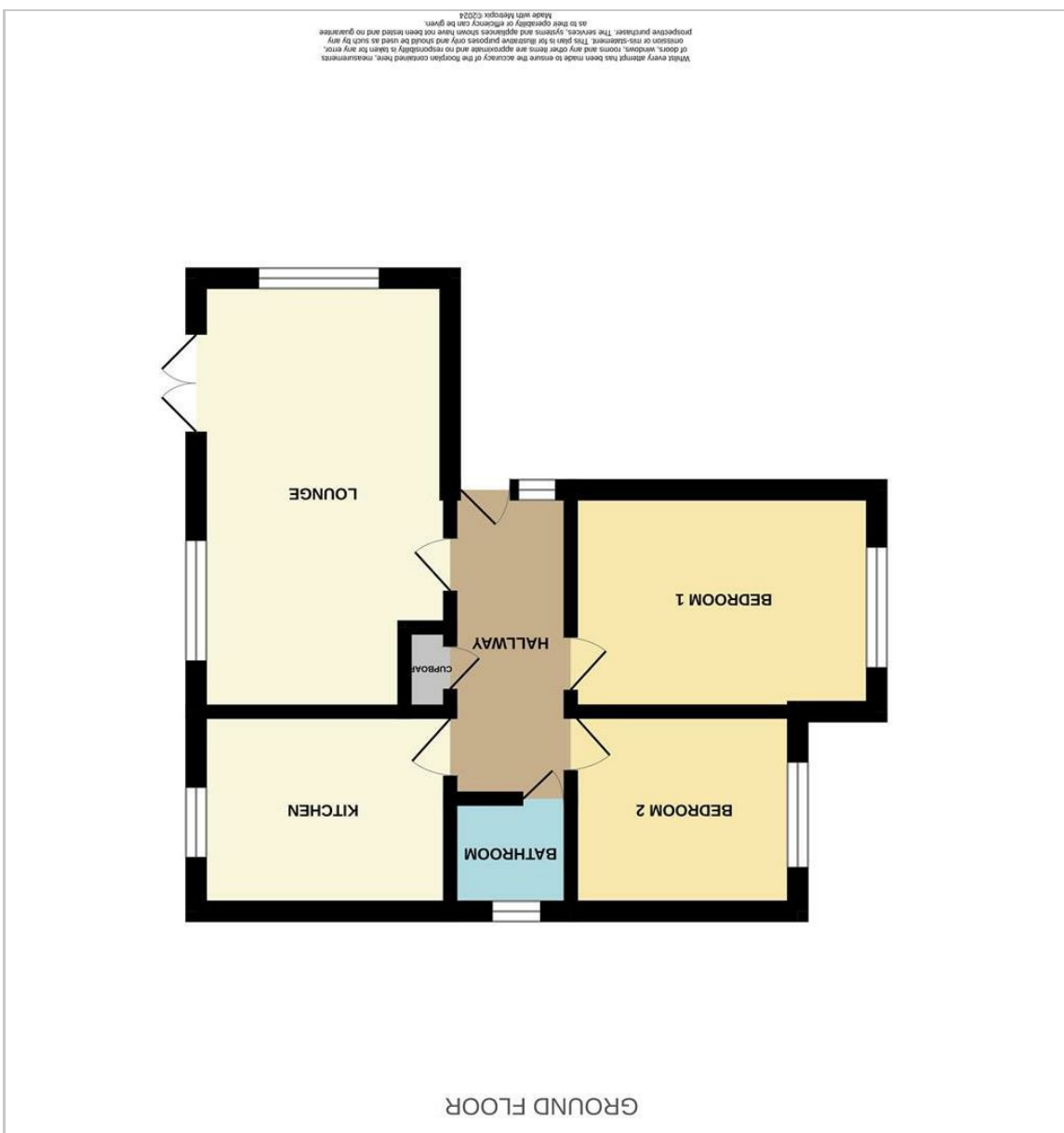
Viewing



Energy Efficiency Graph



Area Map



Floor Plan



41 Lady Winter Drive
 Minster On Sea, Sheerness, ME12 2GF

Price £350,000



41 Lady Winter Drive



- Two Bed Semi Detached Bungalow
- Parking For Multiple Cars
- Gas Central Heating
- Double Glazed Through Out
- Rear Garden With Decking
- Modern Fitted Kitchen
- Very Spacious Lounge
- Council Tax Band C
- Two Double Bedrooms

Description

James Perry welcome you to Lady Winter Drive, Minster On Sea, Sheerness - a charming bungalow that could be your next dream home! This semi-detached property boasts a large lounge, perfect for relaxing or entertaining guests. With two double bedrooms, there's plenty of space for a small family or guests to stay over.

Located in a quiet area, this property offers peace and tranquillity, ideal for those looking to escape the hustle and bustle of city life. The parking for multiple cars ensures convenience for you and your visitors, making coming and going a breeze.

Step into the modern fitted kitchen, where you can unleash your culinary skills and create delicious meals. The low-maintenance rear garden is a lovely spot to enjoy some fresh air and perhaps indulge in some gardening if you fancy.

Don't miss out on the opportunity to make this bungalow your own - a perfect blend of comfort, convenience, and style awaits you at Lady Winter Drive!

Minster On Sea, Sheerness, ME12 2GF

