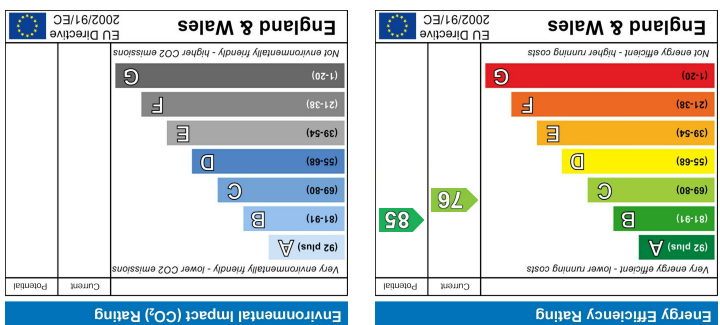


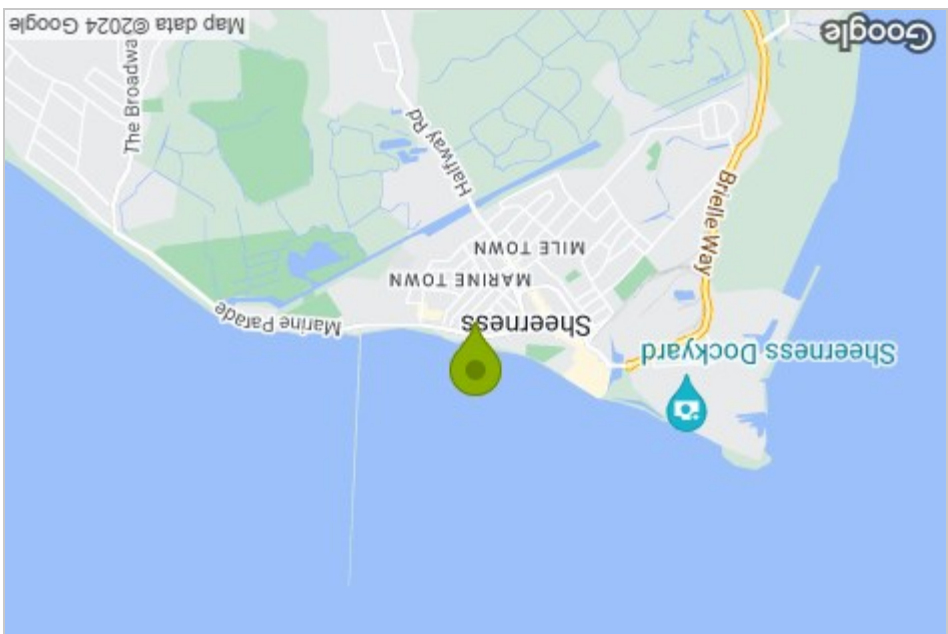
These particulars, whilst believed to be accurate are set out as a general outline only for guidance and do not constitute any part of an offer or contract. Intending purchasers should not rely on them as statements of representation or fact, but must satisfy themselves by inspection or otherwise as to their accuracy. No person in this firm's employment has the authority to make or give any representation or warranty in respect of the property.

Please contact our Isle of Sheppey Office on 01795 666 666 if you wish to arrange a viewing appointment for this property or require further information.

Viewing



Energy Efficiency Graph



Area Map



Floor Plan

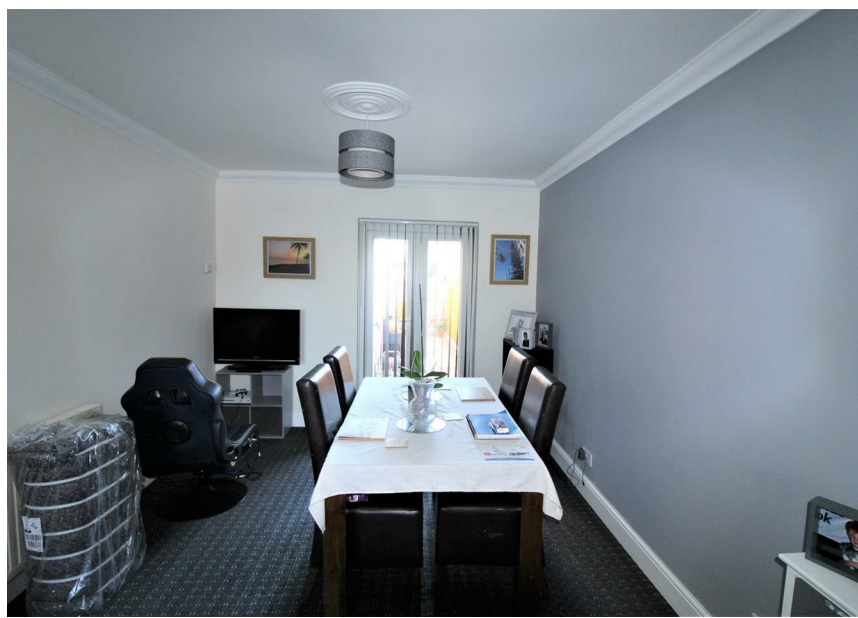


25 Alma Road
 Sheerness, ME12 2PA

Price £300,000



25 Alma Road



- 5 BEDROOMS
- HMO POTENTIAL AND INVESTOR BTL
- WELL PRESENTED
- TOWN CENTRE LOCATION
- DOUBLE GLAZED
- MODERN FITTED KITCHEN
- GAS CENTRAL HEATED
- FAMILY BATHROOM
- 2 BEDROOMS WITH ENSUITE
- LOUNGE/DINER FRENCH DOORS TO GARDEN
- VIEW WITHOUT DELAY

Description

James Perry welcome you to Alma Road, Sheerness - a stunning property that offers the perfect blend of space, comfort, and style. This impressive house boasts 3 reception rooms, providing ample space for entertaining guests or simply relaxing with your loved ones. With 5 generously sized bedrooms, there is plenty of room for the whole family to spread out and make themselves at home.

The property features 3 bathrooms, ensuring that there will never be a queue during the morning rush. Two of the bedrooms come with en-suite bathrooms, adding a touch of luxury and convenience to your daily routine. Imagine unwinding after a long day in your own private sanctuary.

One of the standout features of this property is the large terrace, offering a wonderful outdoor space where you can enjoy al fresco dining, soak up the sun, or simply take in the views of the surrounding area. Whether you're hosting a summer barbecue or enjoying a quiet morning coffee, this terrace is sure to become a favourite spot.

Located in the heart of Sheerness, this house is not just a property - it's a home where cherished memories will be made. Don't miss out on the opportunity to make this beautiful house your own. Contact us today to arrange a viewing and take the first step towards your dream home on Alma Road.

, Sheerness, ME12 2PA

