

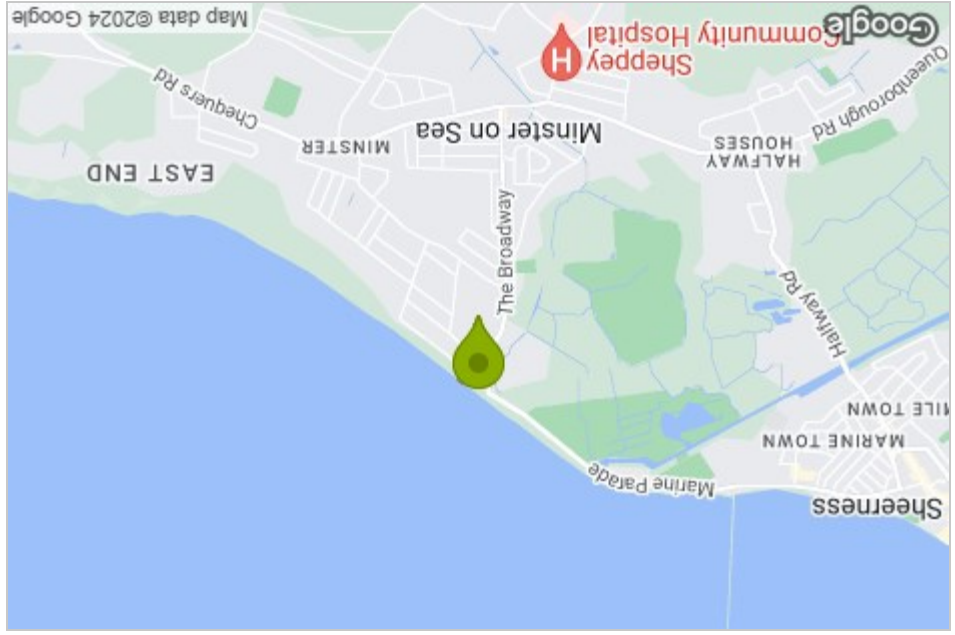
39 Augustine Road
 Minster On Sea, Sheerness, ME12 2NE
 Offers in excess of £485,000



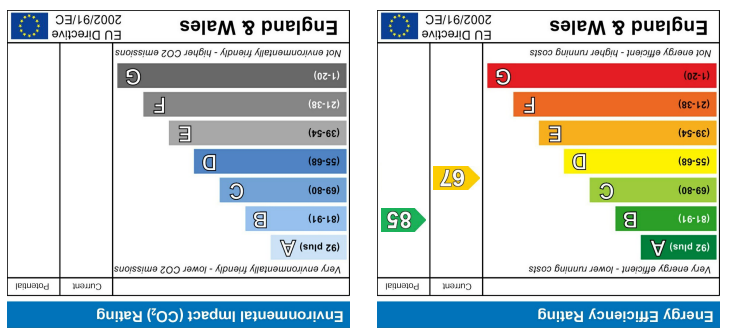
Floor Plan



Area Map



Energy Efficiency Graph

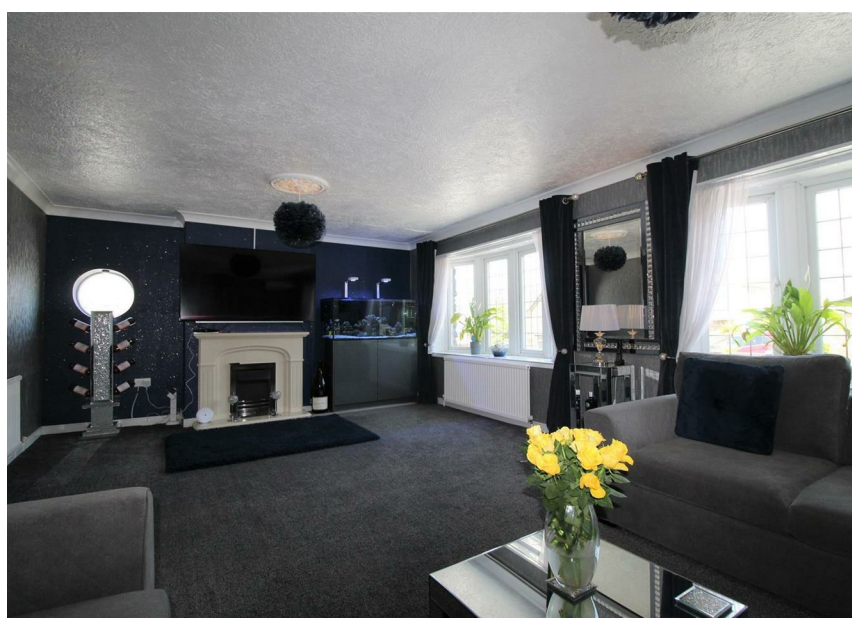


Viewing

Please contact our Isle of Sheppey Office on 01795 666 666 if you wish to arrange a viewing appointment for this property or require further information.

These particulars, whilst believed to be accurate are set out as a general outline only for guidance and do not constitute any part of an offer or contract. Intending purchasers should not rely on them as statements of representation of fact, but must satisfy themselves by inspection or otherwise as to their accuracy. No person in this firm's employment has the authority to make or give any representation or warranty in respect of the property.

39 Augustine Road



- Stunning Bungalow
- Council Tax Band D
- Solar Panels
- Double Glazed Throughout
- Sought After Location
- Off Road Parking For Eight Cars
- South Facing Garden
- Added Occasional Rooms
- Gas Central Heating
- Air Conditioning

Description

James Perry are delighted to bring to the market this stunning three bedroom detached bungalow with off road parking for multiple cars.

This property is one not to be missed, in a sought after location of Minster On Sea with a short walk to the blue flag beach.

The Property has a large bright lounge to the front, Three good sized bedrooms, family bathroom and a separate w/c. The new modern fitted kitchen leads out into a open dining room with double doors to the low maintenance south facing rear garden. You also have the added benefit of two extra occasional rooms which are being used as bedrooms currently.

This property is one that you need to view to appreciate the size and finish of the property.

Please call today to arrange a viewing.

01795 667777

Minster On Sea, Sheerness, ME12 2NE

