

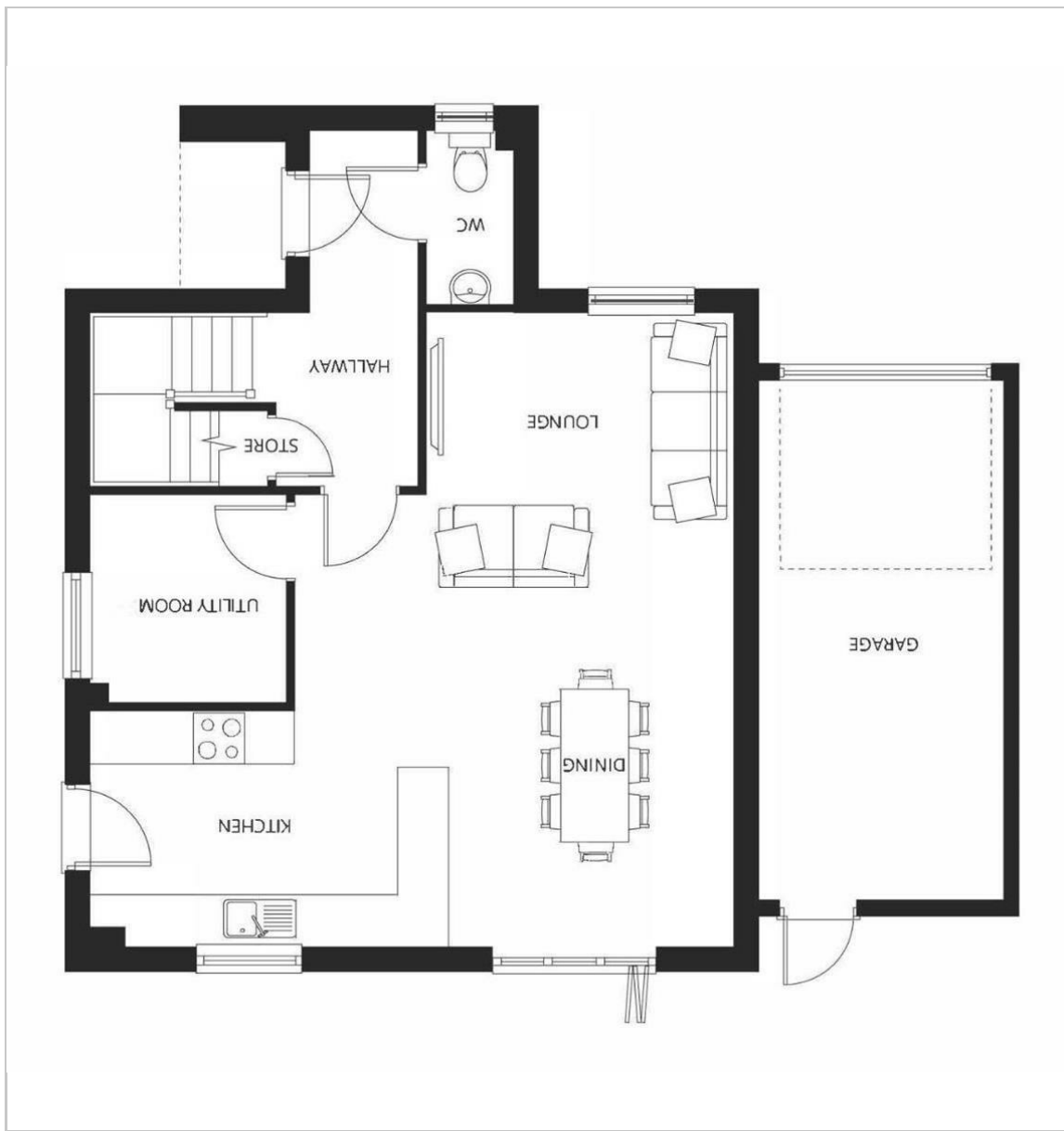
28 Scarborough Drive  
 Minster On Sea, Sheerness, ME12 2NF  
**Asking price £545,000**

4 3 1 B

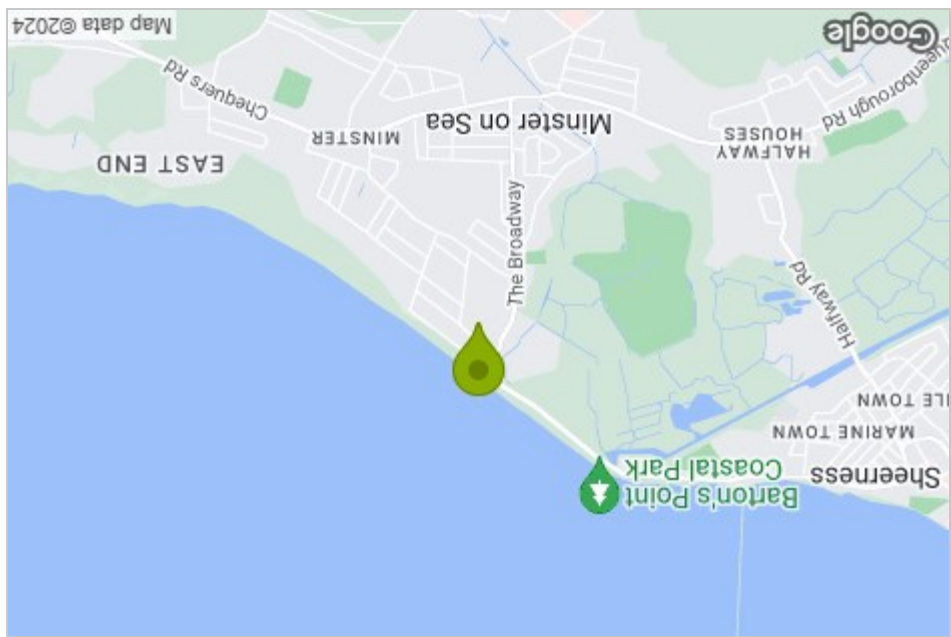


**JAMES PERRY**  
 ESTATE AGENTS

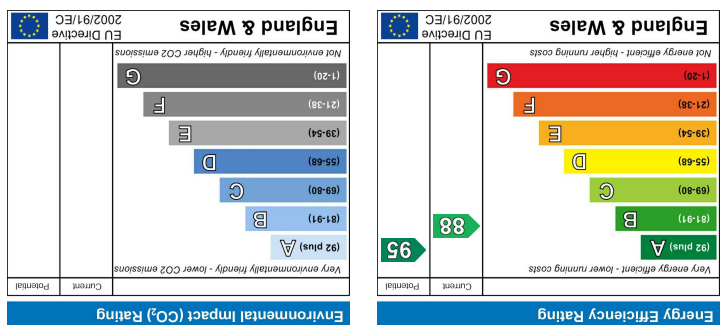
Floor Plan



Area Map



Energy Efficiency Graph



Viewing

Please contact our Isle of Sheppey Office on 01795 666 666 if you wish to arrange a viewing appointment for this property or require further information.

These particulars, whilst believed to be accurate are set out as a general outline only for guidance and do not constitute any part of an offer or contract. Intending purchasers should not rely on them as statements of representation or fact, but must satisfy themselves by inspection or otherwise as to their accuracy. No person in this firm's employment has the authority to make or give any representation or warranty in respect of the property.

# 28 Scarborough Drive



- Freehold
- Double glazing
- Garage
- Private Driveway
- Under floor heating
- Stunning finish
- Fitted Kitchen
- No Onward chain
- Solar Panels
- Book a viewing today!!!

## Description

Rare opportunity to buy A fully furnished show home which is the final Sandy End property. We are offering everything you see in these photos for free included in the asking price. All furniture, artwork, ornaments, and accessories! Absolutely everything is included, even the towels, bathroom, and kitchenware. There is over £25,000 worth of furnishings all skilfully designed and put together by professional interior designers. A stunning, large (1700 ft<sup>2</sup>) modern family home, Sandy End has a stylish brick and composite clad exterior and a spacious interior designed to provide ample space for work, rest and play.

The ground floor features an airy open plan kitchen, living and dining area with bifold doors opening onto the huge garden and patio, there is also a downstairs cloakroom, and a utility room. The first floor provides three bedrooms - one en-suite - plus a family bathroom and more storage, while the top floor is given over to a magnificent en-suite master bedroom with built-in storage. This thoughtfully designed home is situated on a very large plot.

This house is built using the latest renewable energy solutions including air-sourced heat pumps, solar panels, underfloor heating throughout, and wall-mounted electric car chargers. There is a large private driveway and a garage with an electric door. A truly beautiful home with solid traditional construction and a distinctive modern design, Sandy End will suit you at every stage in life. This truly is a dream home that will not disappoint. Book now to view!!!!

Minster On Sea, Sheerness, ME12 2NF

