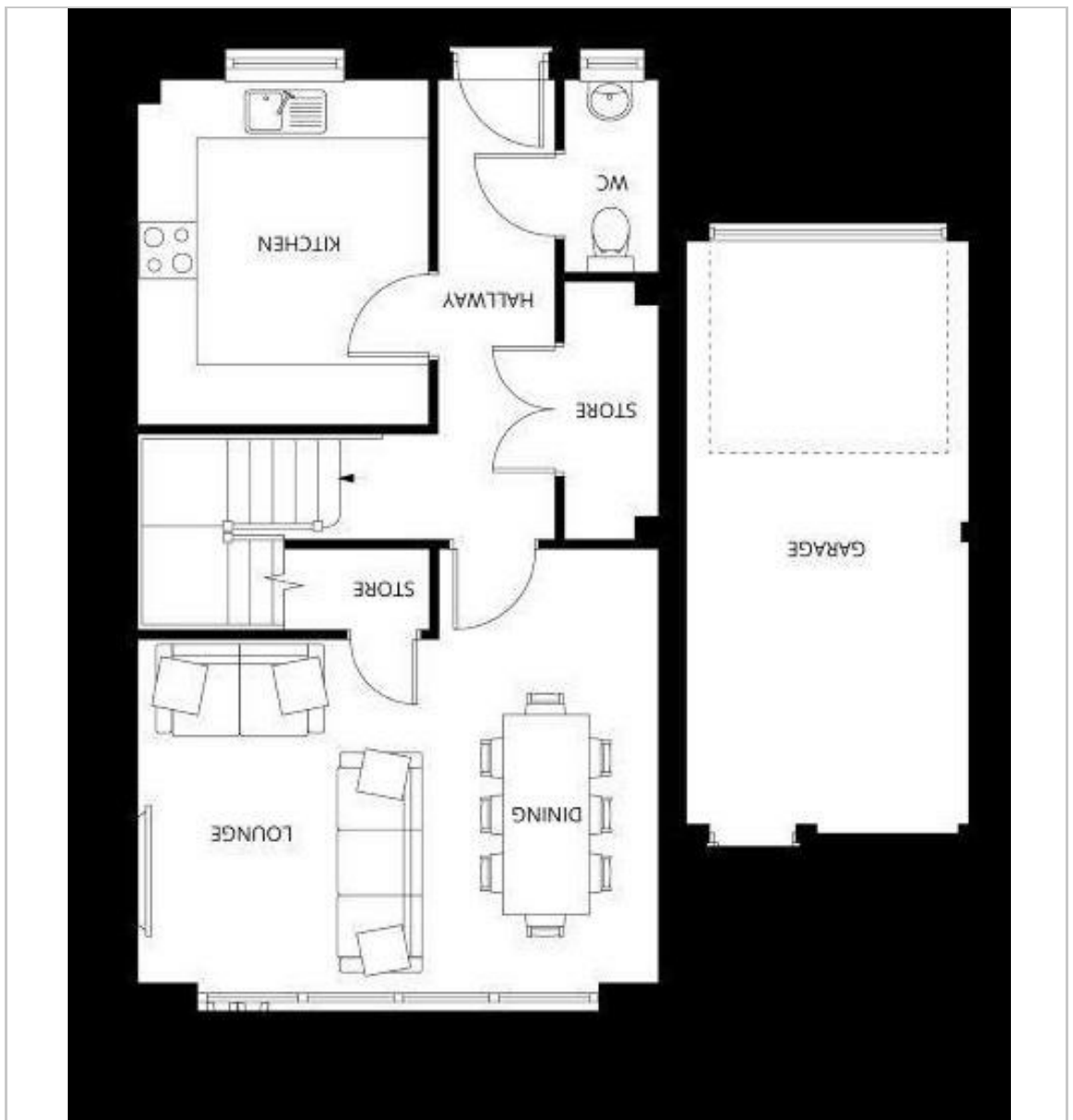




Beachways Augustine Road  
 Minster On Sea, Sheerness, ME12 2NE  
**£475,000**



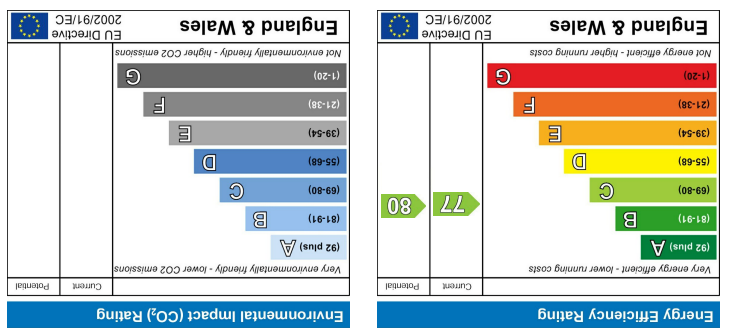
Floor Plan



Area Map



Energy Efficiency Graph

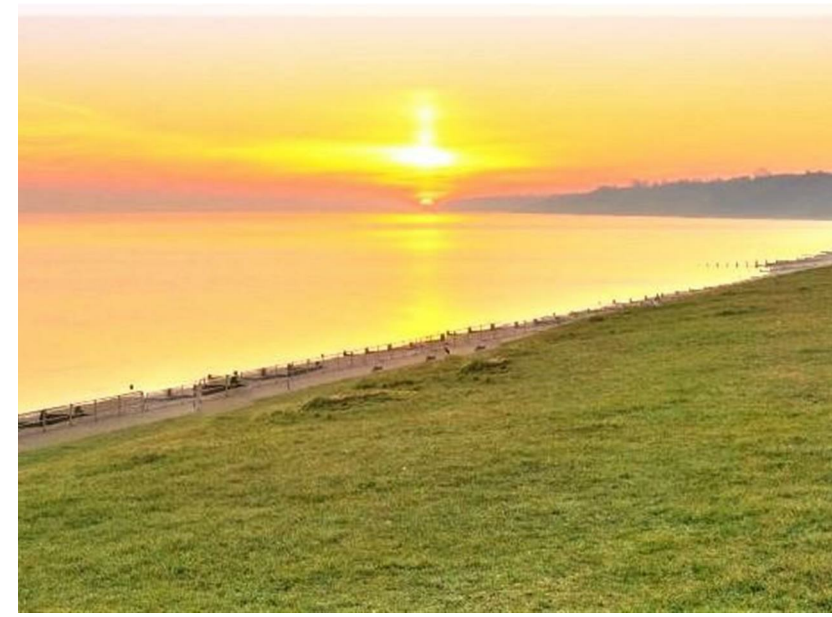


Viewing

Please contact our Isle of Sheppey Office on 01795 666 666 if you wish to arrange a viewing appointment for this property or require further information.

These particulars, whilst believed to be accurate are set out as a general outline only for guidance and do not constitute any part of an offer or contract. Intending purchasers should not rely on them as statements of representation of fact, but must satisfy themselves by inspection or otherwise as to their accuracy. No person in this firm's employment has the authority to make or give any representation or warranty in respect of the property.

# Beachways Augustine Road



- BRAND NEW 4 bedrooms
- Integrated Appliances
- Bi-folding doors
- No Onward Chain
- Double Glazing
- Freehold
- Off-street parking
- Ensuite Bathroom
- Underfloor heating
- Viewings recommended

## Description

Beautiful brand new 4 bedroom detached house in Scarborough Drive Minster On Sea, 2 minute walk from the beach.

This wonderful property sits on a large plot. Spread across three floors, Beachways has a beautiful modern exterior brick and cladding.

Inside there's ample space for family life: On the ground floor, the thoughtful design incorporates storage, a generous hallway, a ground floor cloakroom, a utility room as well as a kitchen designed with family mealtimes in mind. The large airy lounge/dining room has bi-fold doors opening onto a very large patio and garden, making it perfect for summer entertaining or watching the children play outside. The first floor provides two large double bedrooms one with an ensuite and a family bathroom, while the top floor delivers two more very large double bedrooms with built-in wardrobes and a convenient shower room. Outside there is a garage and a large driveway. This house is built using the latest renewable energy solutions including air sourced heat pumps, solar panels and wall mounted electric car chargers.

Enquire Today!

Minster On Sea, Sheerness, ME12 2NE

