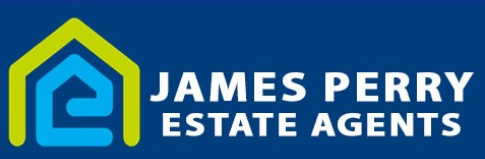
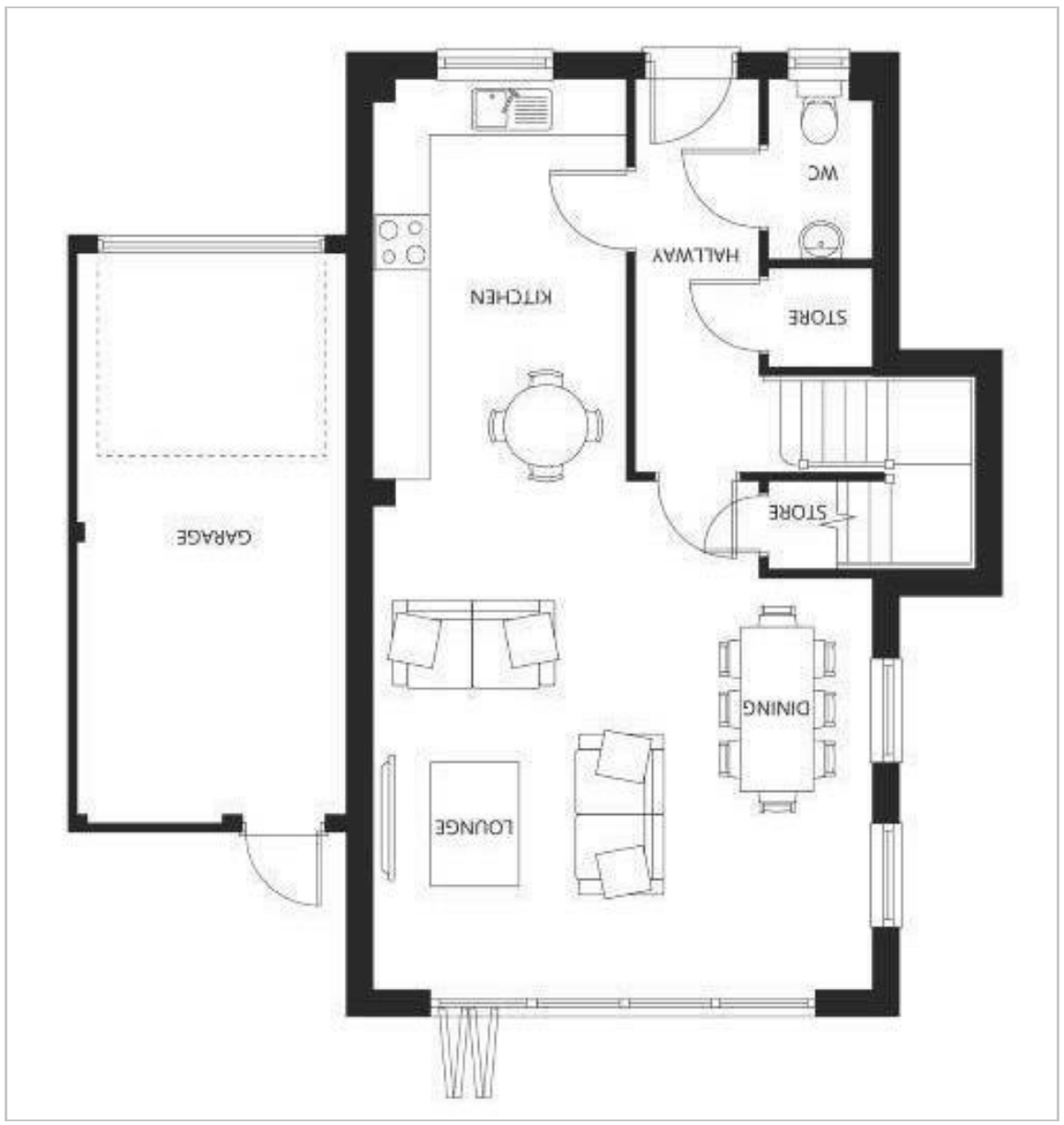


Wild Bank Augustine Road
 Minster On Sea, Sheerness, ME12 2NE
£490,000

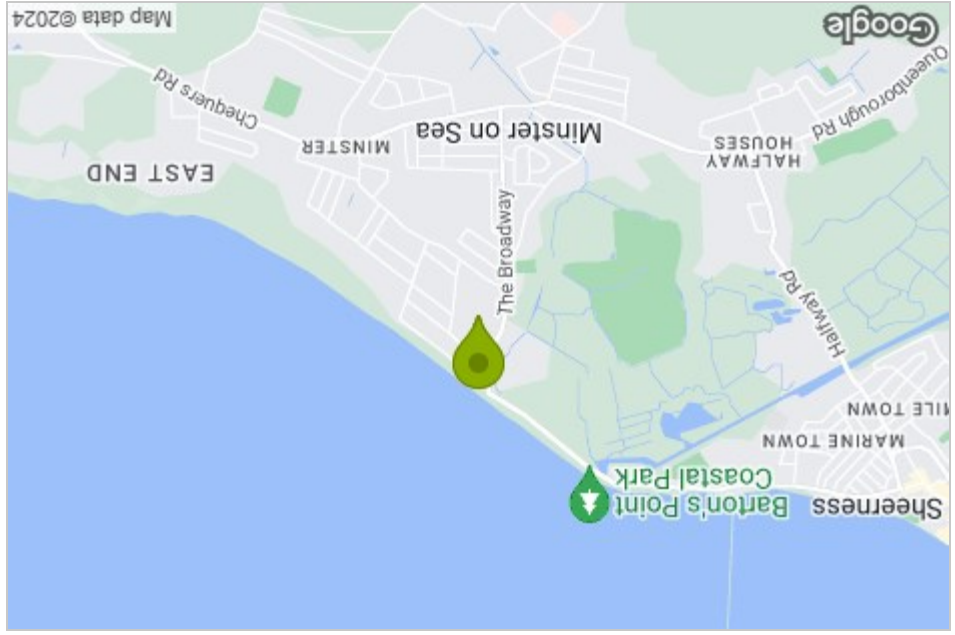
4 3 1 B



Floor Plan



Area Map



Energy Efficiency Graph

Energy Efficiency Rating	
Current	Potential
82	82

Environmental Impact (CO ₂) Rating	
Current	Potential
G	G

Viewing

Please contact our Isle of Sheppey Office on 01795 666 666 if you wish to arrange a viewing appointment for this property or require further information.

These particulars, whilst believed to be accurate are set out as a general outline only for guidance and do not constitute any part of an offer or contract. Intending purchasers should not rely on them as statements of representation or fact, but must satisfy themselves by inspection or otherwise as to their accuracy. No person in this firm's employment, whilst believed to be accurate are set out as a general outline only for guidance and do not constitute any part of an offer or contract.

Wild Bank Augustine Road



- BRAND NEW 4 bedrooms
- Electric car wall charger
- Private driveway
- Energy efficient air sourced heat pump
- Bi-folding doors
- Freehold
- Integrated Appliances
- Solar Panels
- Ensuite Shower
- Viewings recommended

Description

A truly stunning home offering stunning sea views with an exterior that combines cladding, brick and glass, Wild Bank combines traditional brick and block construction with sleek modern accents and angles.

Most of the ground floor is given over to a magnificent open plan kitchen/lounge/dining room, which opens onto the patio and large garden via wide bi-fold doors. There is also a convenient utility cupboard and a downstairs cloakroom. The first floor offers two double bedrooms - one with an en-suite bathroom, plus a family bathroom on the landing, while the second floor houses a further two double bedrooms and a stunning family bathroom. Outside there is a large driveway and garage, to the rear a large patio and turfed garden. It's the perfect home for a growing family. This house is built using the latest renewable energy solutions including air-sourced heat pumps, solar panels and wall mounted electric car chargers.

Enquire Today!

Minster On Sea, Sheerness, ME12 2NE

