



4 Hewitt Drive, Mattishall

In Excess of £290,000



# 4 Hewitt Drive

Mattishall, Dereham

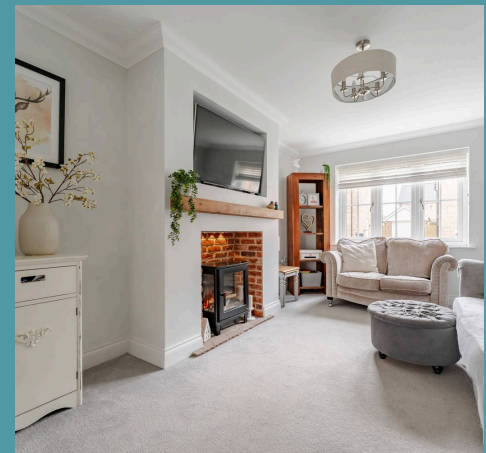
Discover a lifestyle where modern design meets everyday ease in the heart of Mattishall. Behind its red brick façade, Hewitt Drive offers the perfect balance of sleek, contemporary interiors and smart, energy-conscious features like an EV charging point and thoughtfully designed living spaces. From stylish mornings in your countryside-inspired kitchen to cosy evenings by the fireplace, every detail invites both comfort and style. Step outside to enjoy your own private garden, complete with a versatile summer house ideal for entertaining or unwinding. With village charm on your doorstep and quick connections to Norwich and Dereham, this is a home that effortlessly adapts to how you live, work and play.

Council Tax band: C

Tenure: Freehold

EPC Energy Efficiency Rating: B

EPC Environmental Impact Rating: B







## 4 Hewitt Drive

Mattishall, Dereham

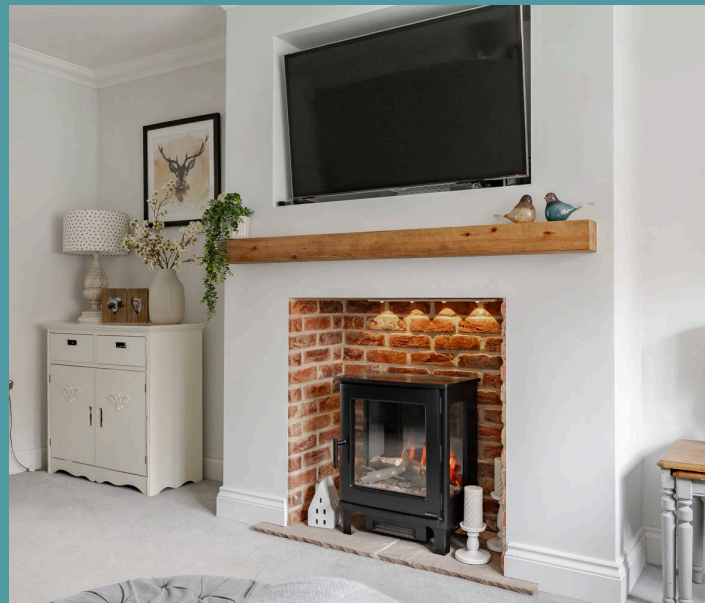
Discover a lifestyle where modern design meets everyday ease in the heart of Mattishall. Behind its red brick façade, Hewitt Drive offers the perfect balance of sleek, contemporary interiors and smart, energy-conscious features like an EV charging point and thoughtfully designed living spaces. From stylish mornings in your countryside-inspired kitchen to cosy evenings by the fireplace, every detail invites both comfort and style. Step outside to enjoy your own private garden, complete with a versatile summer house ideal for entertaining or unwinding. With village charm on your doorstep and quick connections to Norwich and Dereham, this is a home that effortlessly adapts to how you live, work and play.

### The Location

As you leave Hewitt Drive, you're perfectly placed to enjoy all that the popular village of Mattishall has to offer. Just a short stroll away, you'll find a great selection of local amenities including a primary school, friendly cafés, independent shops, a village hall and the characterful village Church.

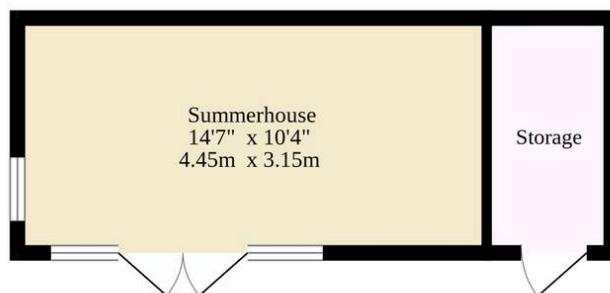
For those who love the outdoors, scenic countryside walks are easily accessible via the many public footpaths that wind through the surrounding area. A doctor's surgery and pharmacy are also close by, providing essential healthcare within easy reach.

For a broader range of services, Dereham lies just 3 miles away, home to schools for all ages, a cinema and a large leisure centre. Meanwhile, the city of Norwich sits around 15 miles to the east, offering

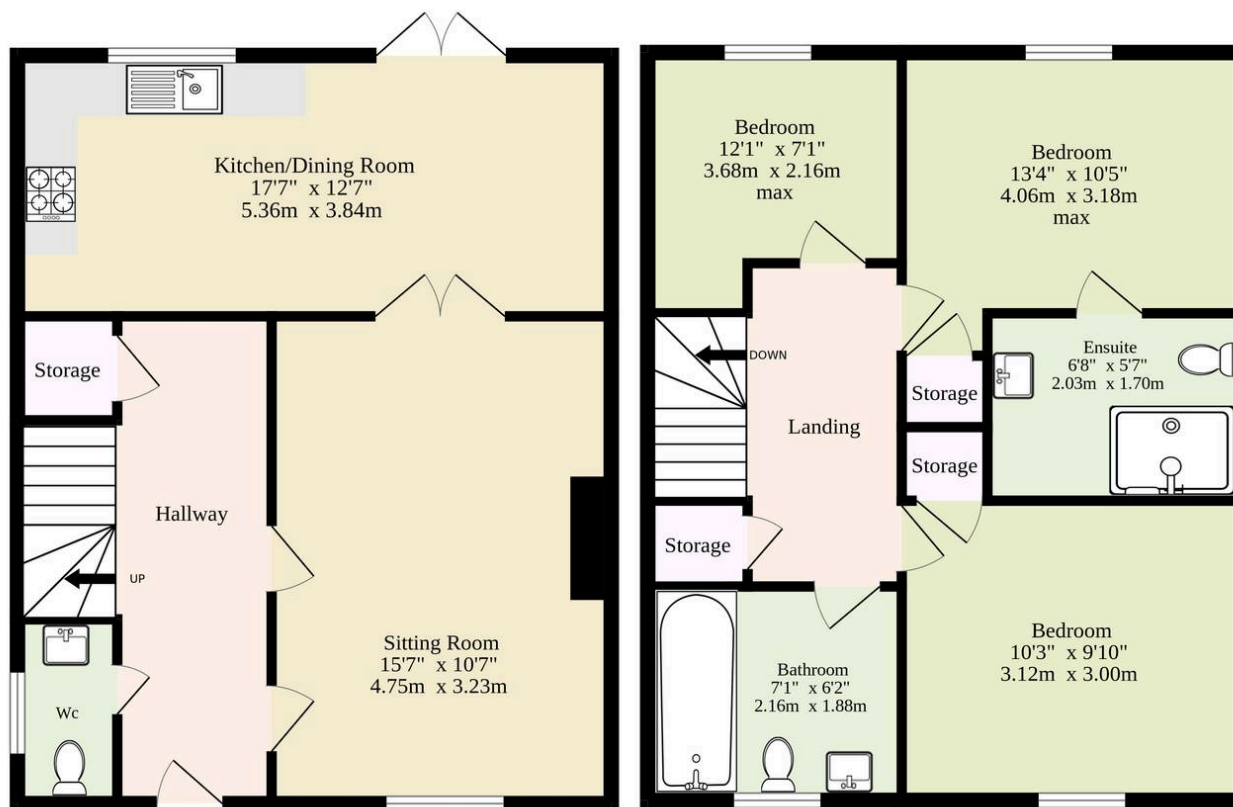




Ground Floor  
658 sq.ft. (61.1 sq.m.) approx.



1st Floor  
443 sq.ft. (41.2 sq.m.) approx.



TOTAL FLOOR AREA : 1101 sq.ft. (102.3 sq.m.) approx.

Whilst every attempt has been made to ensure the accuracy of the floorplan contained here, measurements of doors, windows, rooms and any other items are approximate and no responsibility is taken for any error, omission or mis-statement. This plan is for illustrative purposes only and should be used as such by any prospective purchaser. The services, systems and appliances shown have not been tested and no guarantee as to their operability or efficiency can be given.  
Made with Metropix ©2025

