



31 Falcon Crescent, Costessey

Guide Price £160,000

31 Falcon Crescent

Costessey, Norwich

GUIDE PRICE: £160,000 - £175,000. An immaculate two bedroom apartment in Costessey with contemporary interior. Providing a master bedroom with ensuite, stylish bathroom, modern open-plan kitchen and bright living area with a Juliet balcony. Boasting allocated parking and visitor spaces. Perfect for first time buyers!

Council Tax band: B

Tenure: Leasehold

EPC Energy Efficiency Rating: B

EPC Environmental Impact Rating: B





31 Falcon Crescent

Costessey, Norwich

GUIDE PRICE: £160,000 - £175,000. An immaculate two bedroom apartment in Costessey with contemporary interior. Providing a master bedroom with ensuite, stylish bathroom, modern open-plan kitchen and bright living area with a Juliet balcony. Boasting allocated parking and visitor spaces. Perfect for first time buyers!

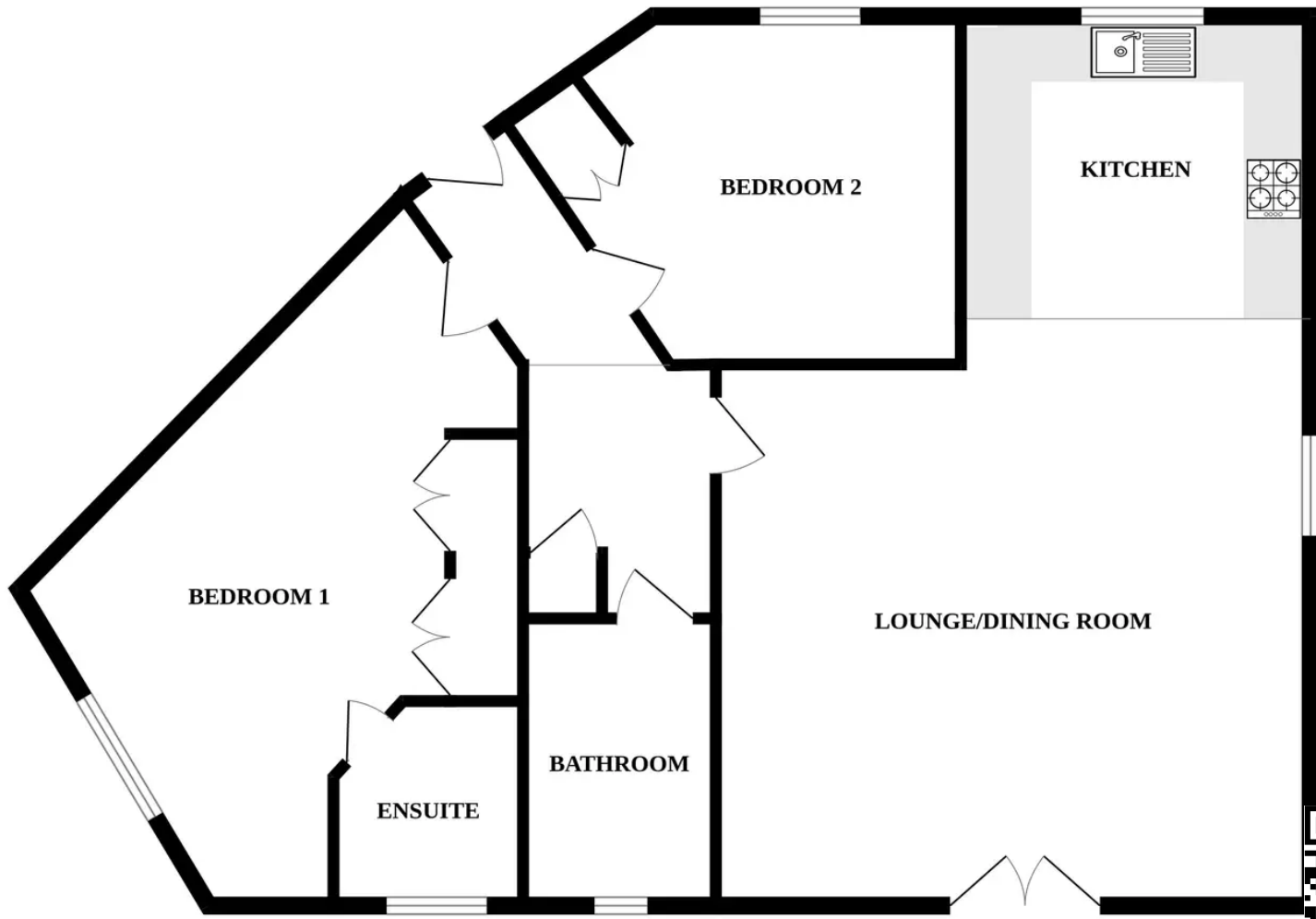
LOCATION

Falcon Crescent in Costessey, nestled within the Queens Hill area, offers a serene and family-friendly residential setting. Surrounded by green spaces and a sense of community, this location provides a peaceful escape while maintaining close proximity to essential amenities. Residents of Falcon Crescent enjoy the convenience of local shops, schools, and parks, creating a harmonious balance between suburban tranquillity and accessibility. With well-connected roadways, including easy access to major routes, the Queens Hill area ensures that residents can effortlessly reach nearby attractions and the wider region.

FALCON CRESCENT

Introducing this immaculately presented two-bedroom apartment located in Costessey. Upon entry, the apartment welcomes you with a sense of sophistication and modern elegance. Featuring two spacious bedrooms, with the master bedroom benefiting from a convenient ensuite bathroom, this property offers privacy. The stylish bathroom, thoughtfully designed with quality fixtures and finishes, adds a touch of luxury to your daily routine.





Whilst every attempt has been made to ensure the accuracy of the floorplan contained here, measurements of doors, windows, rooms and any other items are approximate and no responsibility is taken for any error, omission or mis-statement. This plan is for illustrative purposes only and should be used as such by any prospective purchaser. The services, systems and appliances shown have not been tested and no guarantee as to their operability or efficiency can be given.
Made with Metropix ©2024