



51 Market Street, Shipdham

£200,000 Freehold

Guide Price £200,000-£220,000. This charming property welcomes you with a cosy sitting room adorned with exposed beams and a log burner. The modern shower room boasts stylish patterned tiles and a spacious walk-in shower, while the shaker-style kitchen features pamment flooring and brushed fixtures for a perfect blend of traditional and contemporary design. A standout feature is the excellent-sized conservatory, which seamlessly extends the living space and connects you to the outdoors. Upstairs, two generously sized bedrooms provide comfortable settings. Outside, a private enclosed garden offers ample space for outdoor activities and customization, along with convenient off-road parking to the right of the property.

Council Tax band: A

Tenure: Freehold

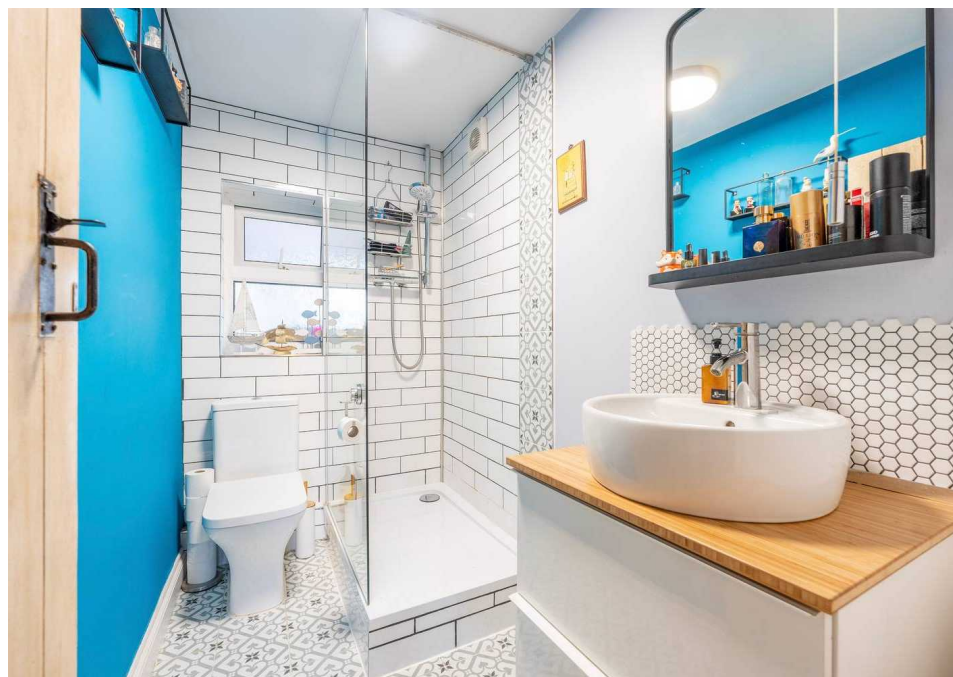
Guide Price £200,000-£220,000. This charming property welcomes you with a cosy sitting room adorned with exposed beams and a log burner. The modern shower room boasts stylish patterned tiles and a spacious walk-in shower, while the shaker-style kitchen features pamment flooring and brushed fixtures for a perfect blend of traditional and contemporary design. A standout feature is the excellent-sized conservatory, which seamlessly extends the living space and connects you to the outdoors. Upstairs, two generously sized bedrooms provide comfortable settings. Outside, a private enclosed garden offers ample space for outdoor activities and customization, along with convenient off-road parking to the right of the property.

The Location

Nestled in Shipdham, this properties location provides easy access to neighbouring towns like Dereham and Watton, boasting vital amenities for daily convenience. Commuters will appreciate the swift access to the A47, facilitating seamless journeys to nearby cities and towns. Families with



Guide Price £200,000-£220,000. This charming property welcomes you with a cosy sitting room adorned with exposed beams and a log burner. The modern shower room boasts stylish patterned tiles and a spacious walk-in shower, while the shaker-style kitchen features pamment flooring and brushed fixtures for a perfect blend of traditional and contemporary design. A standout feature is the excellent-sized conservatory, which seamlessly extends the living space and connects you to the outdoors. Upstairs, two generously sized bedrooms provide comfortable settings.



Guide Price £200,000-£220,000. This charming property welcomes you with a cosy sitting room adorned with exposed beams and a log burner. The modern shower room boasts stylish patterned tiles and a spacious walk-in shower, while the shaker-style kitchen features pamment flooring and brushed fixtures for a perfect blend of traditional and contemporary design. A standout feature is the excellent-sized conservatory, which seamlessly extends the living space and connects you to the outdoors. Upstairs, two generously sized bedrooms provide comfortable settings. Outside, a private enclosed garden offers ample space for outdoor activities and customization, along with convenient off-road parking to the right of the property.

The Location

Nestled in Shipdham, this properties location provides easy access to neighbouring towns like Dereham and Watton, boasting vital amenities for daily convenience. Commuters will appreciate the swift access to the A47, facilitating seamless journeys to nearby cities and towns. Families with children will find this area particularly enticing as it falls within the catchment area for highly regarded schools.

Market Street

As you enter the property, you are welcomed into a cosy sitting room that exudes character with exposed beams and a focal point log burner set against charming brick accents. The ambience is further enhanced by the warmth of the fire, creating a welcoming atmosphere.

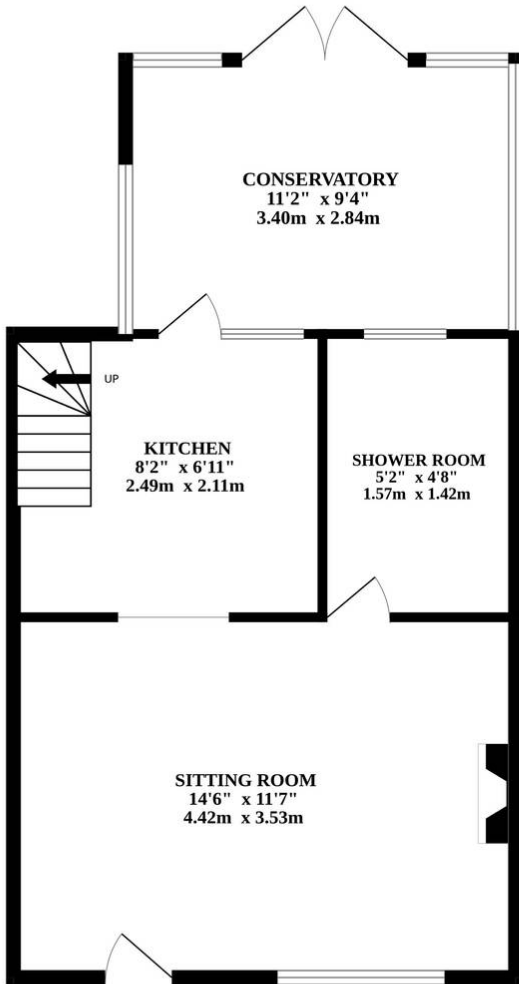
The property boasts a modern shower room featuring stylish patterned tiles, a spacious walk-in shower and a classic latch door, exuding both functionality and aesthetics. The shaker-style kitchen is complete with pamment flooring, brushed fixtures and a tiled backsplash, offering a blend of traditional and contemporary design elements. One of the standout features of this property is the excellent sized conservatory, seamlessly integrated to extend the living space and bring the outdoors in.

Upstairs, the two generously sized bedrooms offer comfortable environments, a rare find for a property of this style. Throughout the home, traditional period features add a touch of history and character.

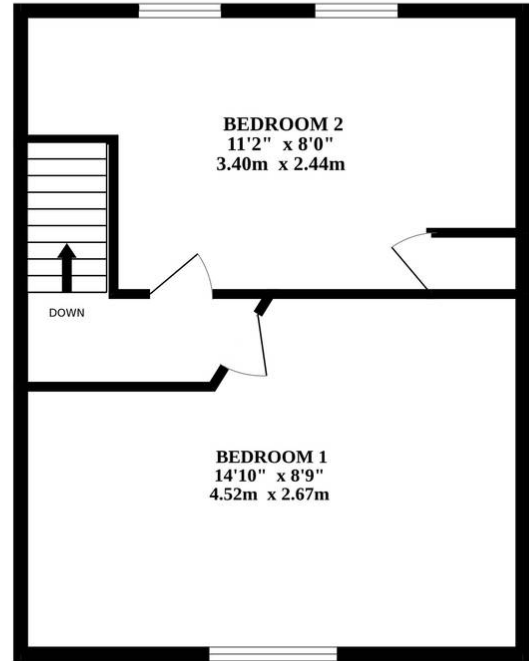
Outside, a private enclosed garden plot awaits, providing ample space for outdoor activities and the opportunity for



GROUND FLOOR



1ST FLOOR



Whilst every attempt has been made to ensure the accuracy of the floorplan contained here, measurements of doors, windows, rooms and any other items are approximate and no responsibility is taken for any error, omission or mis-statement. This plan is for illustrative purposes only and should be used as such by any prospective purchaser. The services, systems and appliances shown have not been tested and no guarantee as to their operability or efficiency can be given.
Made with Metropix ©2024

You can include any text here. The text can be modified upon generating your brochure.

You can include any text here. The text can be modified upon generating your brochure.

