

Minors & Brady

Estate Agents, Lettings & Property Management



Burnham Meadows

Sutton Estate, Burnham Market, Norfolk

Welcome to

Burnham Meadows

Situated in the idyllic village of Burnham Market, just 6 miles from the golden sands of Brancaster Beach.

9 exclusive 3 bedroom properties.

Village location

Close to breathtaking Norfolk coastline

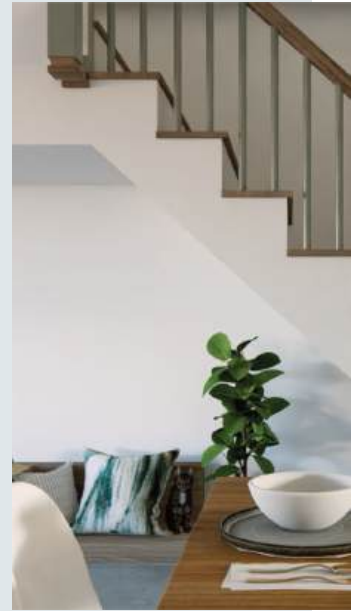
Customisable to your requirements

B E S P O K E GROUP
CONSTRUCTION





"Bespoke Construction Group is delighted to introduce 9 exclusive properties, all uniquely built and titled."



Plot 1 Meadow House - 3 bedroom, family bathroom, 1 ensuite, ground floor WC, rear single storey garden room

Plot 2 Marsh View - 3 bedroom, family bathroom, 1 ensuite, ground floor WC, rear single storey garden room, single storey garage

Plot 3 Meadow Cottage - 3 bedroom, family bathroom, 1 ensuite, ground floor WC, rear single storey garden room

Plot 4 Scolt Head House - 3 bedroom, family bathroom, 1 ensuite, ground floor WC, rear single storey garden room



*"Each residence
promises
unparalleled
luxury"*

Plot 5 The Meadowside - 3
bedroom, family bathroom, 1
ensuite, ground floor WC

Plot 6 Meadow Croft Lodge - 3
bedroom, family bathroom, 1
ensuite, ground floor WC,
single storey garage

Plot 7 Turning Tides - 3
bedroom, family bathroom, 1
ensuite, ground floor WC

Plot 8 Ocean Breeze - 3
bedroom, family bathroom, 1
ensuite, ground floor WC

Plot 9 Meadowsweet - 3
bedroom, family bathroom, 1
ensuite, ground floor WC

*Meadow House, Meadow Cottage &
Scot Head House*



Marsh View



The Meadowside



Meadow Croft Lodge



Turning Tides & Meadowsweet



Ocean Breeze



Site Map

Plot 1 Meadow House

Plot 2 Marsh View

Plot 3 Meadow Cottage

Plot 4 Scolt Head House

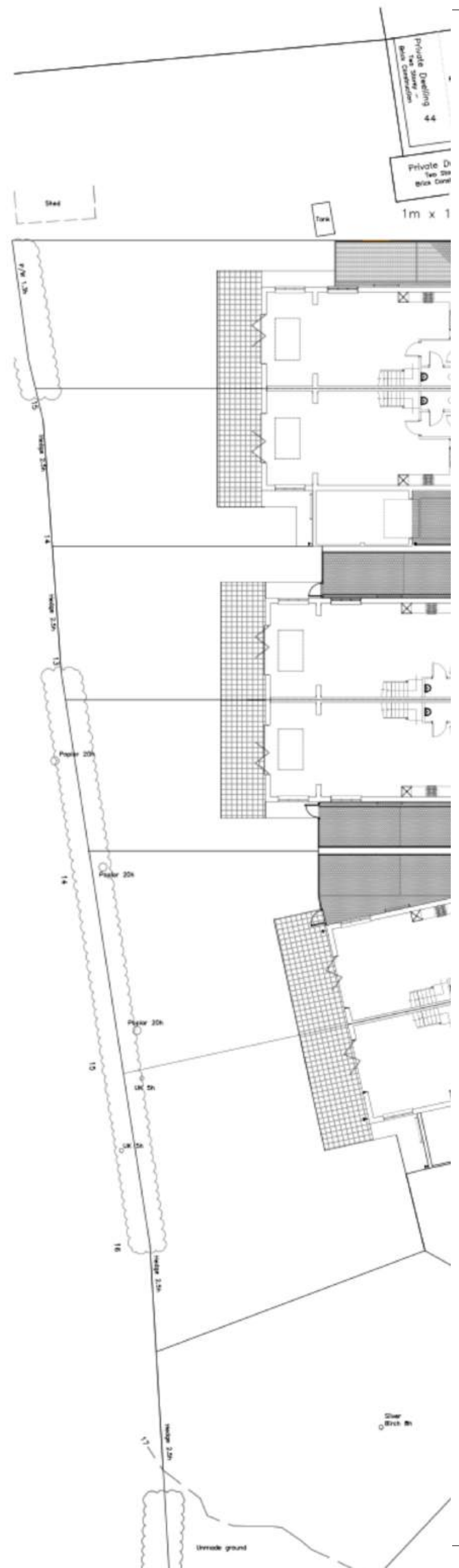
Plot 5 The Meadowside

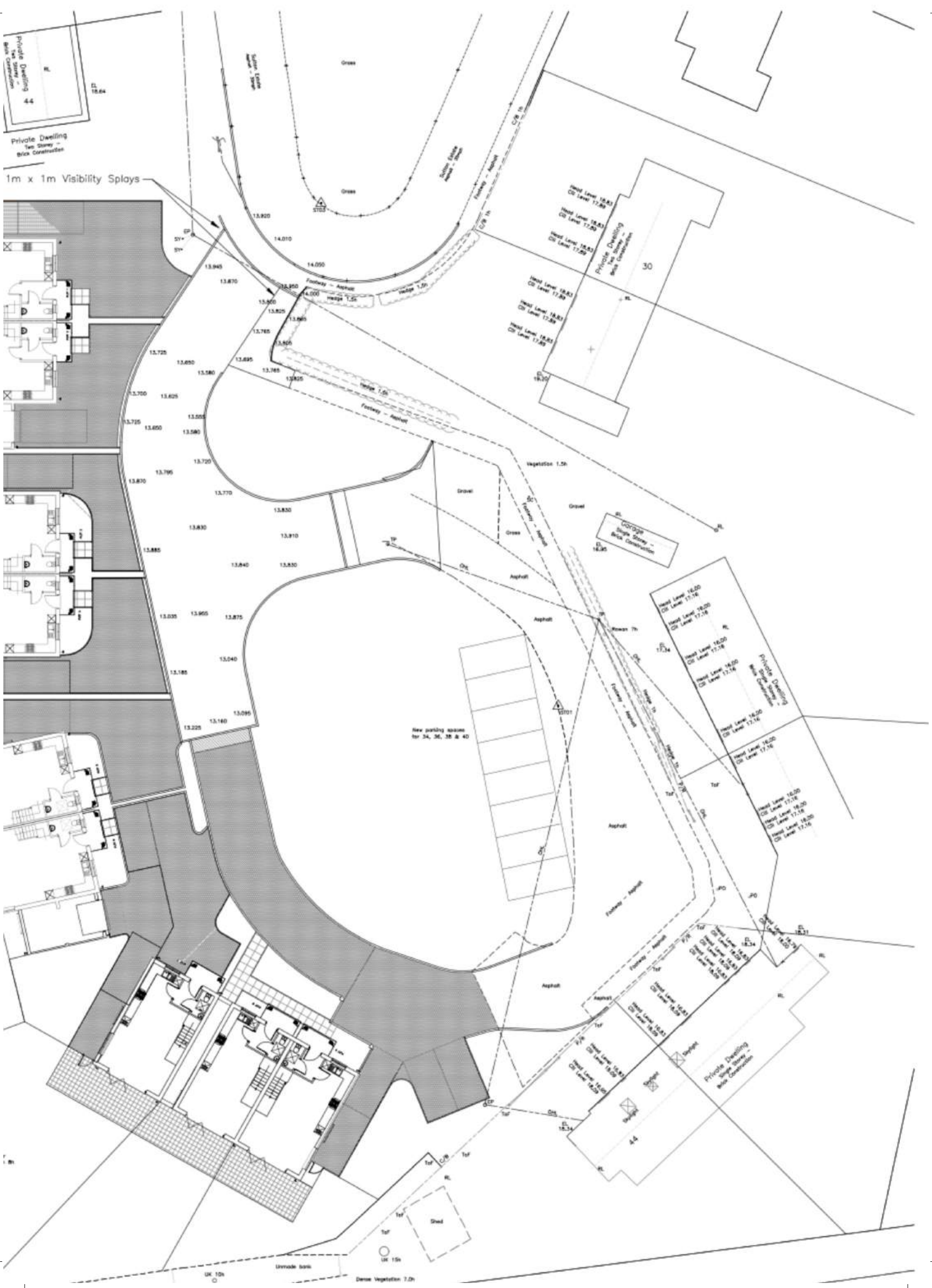
Plot 6 Meadow Croft Lodge

Plot 7 Turning Tides

Plot 8 Ocean Breeze

Plot 9 Meadowsweet





Private Dwelling
Single Storey -
Brick Construction

1m x 1m Visibility Splays

New parking spaces
for 34, 36, 38 & 40

Garage
Single Storey -
Brick Construction

Head Level 18.20
CD Level 17.16

Head Level 18.20
CD Level 17.16

Head Level 18.20
CD Level 17.16

Head Level 18.20
CD Level 17.16

Head Level 18.20
CD Level 17.16

Head Level 18.20
CD Level 17.16

Private Dwelling
Single Storey -
Brick Construction

Head Level 18.53
CD Level 17.89

Head Level 18.53
CD Level 17.89

Head Level 18.53
CD Level 17.89

Head Level 18.53
CD Level 17.89

Private Dwelling
Single Storey -
Brick Construction

Urrvale bank

Dense Vegetation 1.5h

*"...opportunities to
make personal
decisions...allowing
you to craft a space
that perfectly
compliments your
lifestyle"*





Meticulously designed and crafted, these exquisite properties provide unique and luxurious spaces perfect for modern living. With the rare opportunity for you to tailor areas of the design to your personal requirements, this really is the perfect opportunity to create your dream home.

On entering the properties you will be welcomed to the open plan ground floor which offers underfloor heating throughout; a luxurious and economic solution to ensuring you stay warm through the winter months. To ensure light filled living and ultimate access to your immaculately crafted landscape garden, the properties also all boast expansive aluminium bi-fold doors.

All properties are adorned with Farrow and Ball's neutral tones throughout, creating a timeless and elegant canvas for your personal touches. In addition, the bespoke kitchen that awaits you also provides you with the opportunity to customise. With a choice of granite or quartz worktops and a collection of high quality, built in appliances, your kitchen will be the heart of the home.

A convenient downstairs WC has been allocated to complete the ground floor on all properties - an invaluable space for busy homes, eliminating the need to access the first floor.

Minors & Brady - A new home marks the start of a new adventure





On ascending to the first floor, you will be invited to a spacious master bedroom; the perfect place to relax and seek ultimate privacy with the addition of an ensuite, where contemporary sanitary ware and heated towel rails whisper luxury and comfort.

Additional bedrooms await your personal touches and are accompanied by a carefully designed family bathroom, offering space, comfort, and functionality for all.

High quality finishes are evident throughout, from the wooden internal doors adorned with brushed metal handles, to the all important light switches and sockets which have also been designed with style. As you step outside to the rear of the properties, you will be met with a low maintenance landscaped garden area, enriched with the elegance of porcelain tiles. With the immaculate lawn and surrounding fencing and hedges ensuring privacy and security, it really is the perfect space for relaxing and entertaining.

Externally, you will also find all properties offering off road car parking, external lighting, power supplies and taps and for the environmentally conscious homeowners, you can even request electric charging points to be installed. You will have additional opportunities to make personal decisions regarding your outdoor areas, allowing you to craft a space that perfectly compliments your lifestyle.

At every turn of the Burnham Meadows properties, design has been led by thoughtful touches. Bespoke Construction Group provides a full turnkey service to their client base, offering intricate architectural design services to create breathtaking concepts. When it comes to turning vision into reality, the Group have created a streamlined and efficient process, managed closely in align with the highest industry standards.

With design expertise, an intellectual eye for interiors, and first hand experience of what truly makes a house a home, Bespoke Construction Group are committed to excellence and driven by profound passion for creating luxurious living spaces. The team have established themselves as the go-to new build home construction professionals, fast becoming the number one choice for forever homes.

Burnham Market, Norfolk

The place to call home...

Thought to be named after the nearby River Burn, Burnham Market is a traditional and unspoilt 17th Century Norfolk village, permeated with elegance and rich history.

Close to the renowned North Norfolk Coastline, it offers the perfect location to explore some of the counties finest beaches, landscapes, and nature reserves and this alone, suggests why the village is a firm favourite with homeowners.

Boasting over 30 independent boutiques and charming galleries, you will be captivated by the unique and creative culture found within the village. In addition, you will find a haven of hospitality offered through an array of delectable restaurants, deli's, and cafe's, all of which come highly recommended. So whether you're looking for your morning coffee, a slice of seafood heaven, or an indulgent fine dining experience, you will be catered for.

On the doorstep of the coast, Burnham Market provides the perfect combination of elegance, vibrance, and traditional village life, proving why it's one of Norfolk's most highly sought after locations.



"Permeated with elegance and rich history"



*"Perfectly
located on the
doorstep of
the coast"*

Nearby

5 miles to Holkham

6 miles to Wells-next-the-sea

12 miles to Hunstanton

15 miles to Sandringham

22 miles to King's Lynn

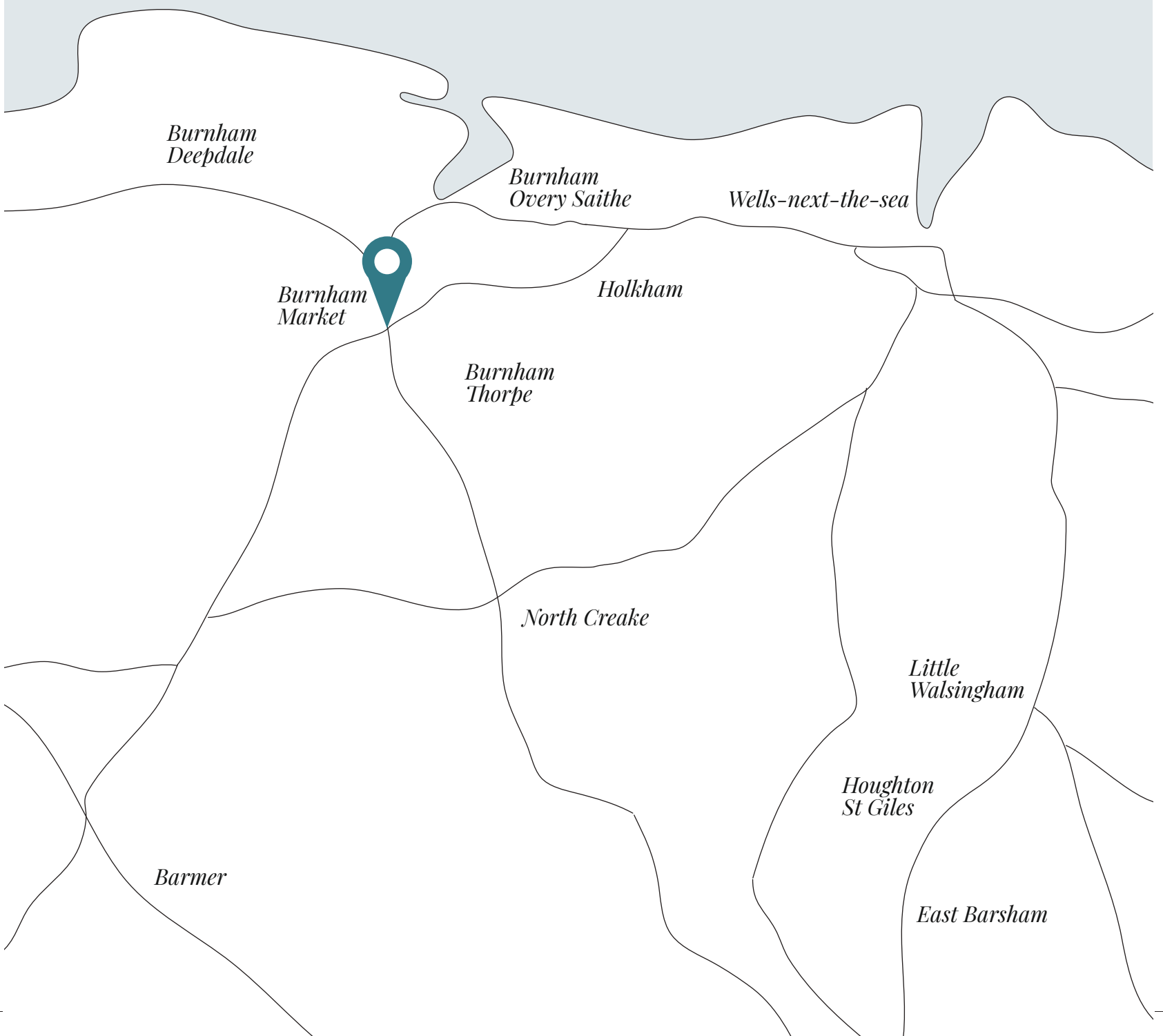
Minors & Brady - A new home marks the start of a new adventure





North Norfolk

East of England



"Meticulously designed & crafted, the exquisite properties provide unique & luxurious spaces perfect for modern living"





Minors & Brady

Estate Agents, Lettings & Property Management

B E S P O K E
C O N S T R U C T I O N **GROUP**

dereham@minorsandbrady.co.uk

www.minorsandbrady.co.uk | 01362 700820

www.bespokeconstructiongroup.co.uk | 01485 570067