

Bollinder Place, London, EC1V

Offering impressive south facing views of the city skyline, this generous one bedroom apartment is located on the 16th of 43 floors within this eye catching tower. 250 City Road has much to offer its residents, from screening and karaoke rooms, to business lounges and a yoga studio. A 20m three lane pool, spa and gymnasium complete this appealing array of resident only facilities.

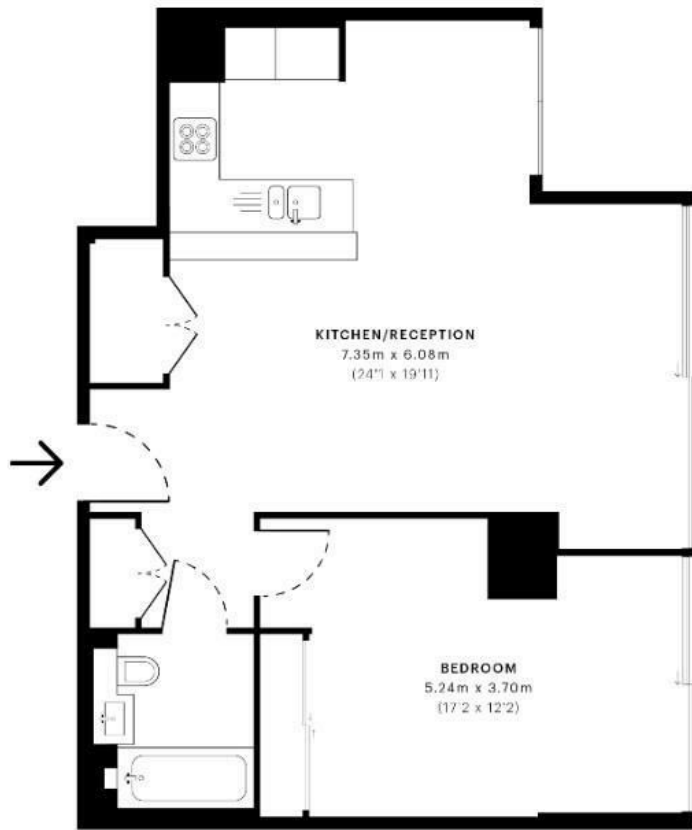
You enter the apartment into the inviting 21ftx19ft lounge/dining area, with floor to ceiling windows, helping showcasing it's jaw dropping views, to your left is the fully integrated kitchen suite. The bedroom is to your right, also with floor to ceiling windows and a smart modern bathroom finishes the unit.

The tower is ideally situated within a short commute of both Old Street and Angel underground stations, minutes from Regents Canal and opposite City Road Basin.

The property will be sold with a tenant in situ, making this a potential investment opportunity.

- Impressive city views
- Sixteenth floor
- EPC rating - B
- Leasehold
- 900+ year lease
- Council tax band - B
- Local rates - £1411

Asking price £960,000



Sixteenth Floor



spec and RICS are the industry standard for property measurement and valuation. RICS is the global leader in property measurement and valuation. RICS is the only organization that is a member of the International Union of Pure and Applied Chemistry (IUPAC). RICS is the only organization that is a member of the International Union of Pure and Applied Chemistry (IUPAC).

PROPERTY REFERENCE: 15/03/2023
PROCESSED BY: KIMBERLY DUNN

SPEC ID: 054070810399620004/0200016

Energy Efficiency Rating		Current	Potential
Very energy efficient - lower running costs	(92 plus) A		
(81-91) B			
(69-80) C			
(55-68) D			
(39-54) E			
(21-38) F			
(1-20) G			
Not energy efficient - higher running costs			
EU Directive 2002/91/EC		83	83

Environmental Impact (CO ₂) Rating		Current	Potential
Very environmentally friendly - lower CO ₂ emissions	(92 plus) A		
(81-91) B			
(69-80) C			
(55-68) D			
(39-54) E			
(21-38) F			
(1-20) G			
Not environmentally friendly - higher CO ₂ emissions			
EU Directive 2002/91/EC			

