

THE COACHES

An
Exclusive
Luxury

Development of 4 *Bedroom* Family Homes

The
Perfect Family
environment in the
heart of a village
community

Introduction

The Coaches is a beautiful new luxury development comprising of four new 4 bed detached homes, situated in the picturesque village of Calveley, only 5.5 miles from Nantwich and 10 miles from Chester.

This exceptional collection of four bedroom detached homes will take pride of place in Calveley; a beautiful and quaint small village located in the county of East Cheshire. This luxurious development of 4 homes is being crafted with our signature style.



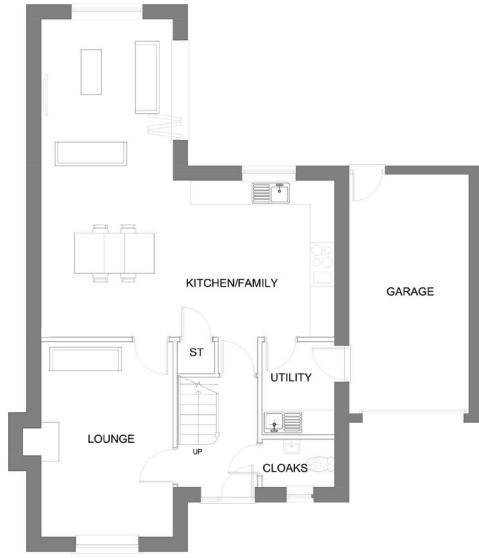
Warranty

All homes come
with a ten-year
warranty



Chester

Plot 3



GROUND FLOOR PLAN

Lounge	3940mm [12'-12"] x 3315mm [10'-11"]
Kitchen/Family	7980mm [26'-3"] x 7365mm [24'-2"]
Cloaks	1225mm [4'-1"] x 1825mm [5'-12"]
Utility	2350mm [7'9"] x 1825 [5'-12"]
Garage	6000mm [19'9"] x 3000 [9'-11"]

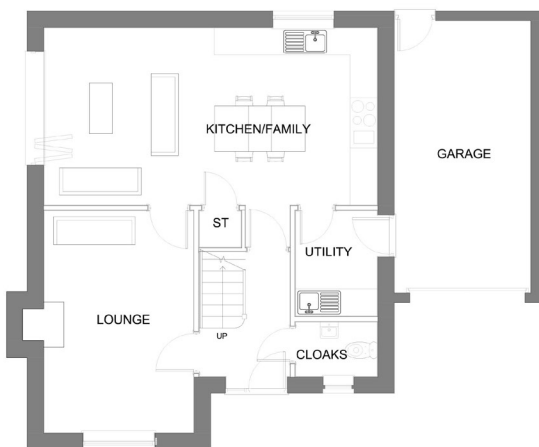


FIRST FLOOR PLAN

Bedroom 1	3940mm [12'-12"] x 3330mm [10'-12"]
En Suite	1225mm [4'-1"] x 2315mm [7'-8"]
Bedroom 2	3995mm [13'-2"] x 2835mm [9'-4"]
Bedroom 3	3630mm [11'11"] x 2875 [9'-6"]
Bedroom 4	3570mm [11'9"] x 3000 [9'-11"]
En Suite	1210mm [3'-12"] x 2285mm [7'-6"]
Bathroom	2385mm [7'-10"] x 2055mm [6'-9"]

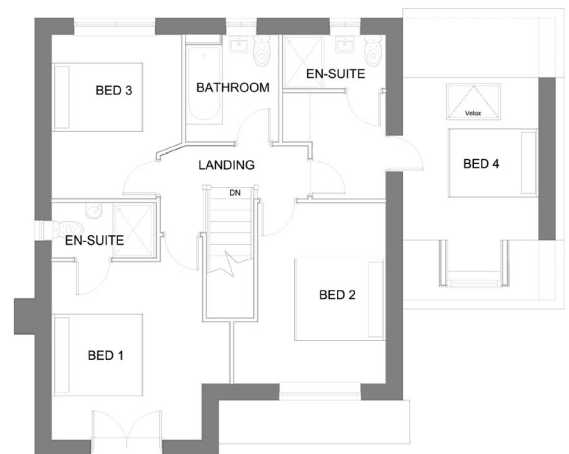
Shrewsbury

Plot 4



GROUND FLOOR PLAN

Lounge	3940mm [12'-12"] x 3315mm [10'-11"]
Kitchen/Family	7980mm [26'-3"] x 7365mm [24'-2"]
Cloaks	1225mm [4'-1"] x 1825mm [5'-12"]
Utility	2350mm [7'9"] x 1825 [5'-12"]
Garage	6000mm [19'9"] x 3000 [9'-11"]



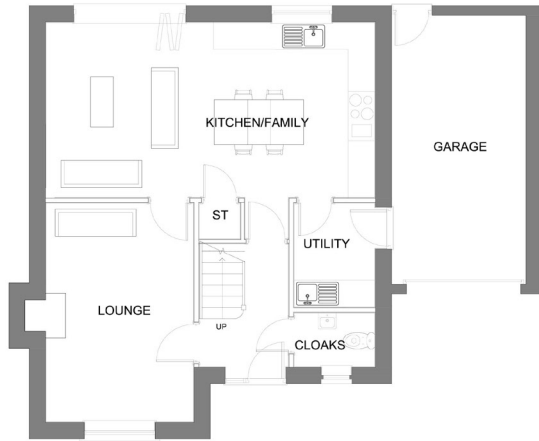
FIRST FLOOR PLAN

Bedroom 1	3940mm [12'-12"] x 3330mm [10'-12"]
En Suite	1225mm [4'-1"] x 2315mm [7'-8"]
Bedroom 2	3995mm [13'-2"] x 2835mm [9'-4"]
Bedroom 3	3630mm [11'11"] x 2875 [9'-6"]
Bedroom 4	3570mm [11'9"] x 3000 [9'-11"]
En Suite	1210mm [3'-12"] x 2285mm [7'-6"]
Bathroom	2385mm [7'-10"] x 2055mm [6'-9"]

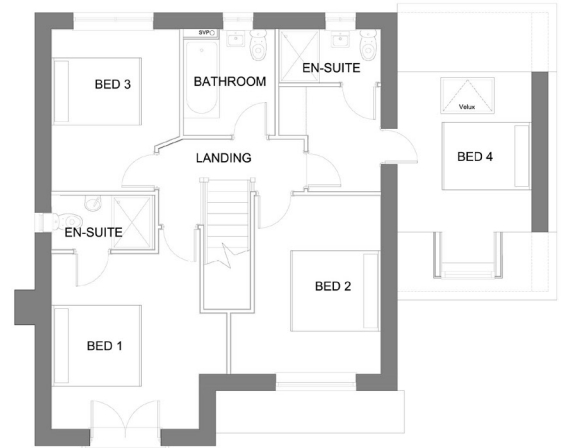
Floor Plans

Shrewsbury

Plot 1



GROUND FLOOR PLAN



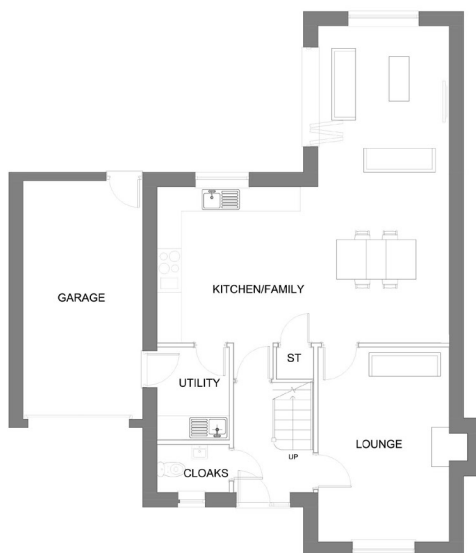
FIRST FLOOR PLAN

Lounge	3940mm [12'-12"] x 3315mm [10'-11"]
Kitchen/Family	7980mm [26'-3"] x 7365mm [24'-2"]
Cloaks	1225mm [4'-1"] x 1825mm [5'-12"]
Utility	2350mm [7'9"] x 1825 [5'-12"]
Garage	6000mm [19'9"] x 3000 [9'-11"]

Bedroom 1	3940mm [12'-12"] x 3330mm [10'-12"]
En Suite	1225mm [4'-1"] x 2315mm [7'-8"]
Bedroom 2	3995mm [13'-2"] x 2835mm [9'-4"]
Bedroom 3	3630mm [11'11"] x 2875 [9'-6"]
Bedroom 4	3570mm [11'9"] x 3000 [9'-11"]
En Suite	1210mm [3'-12"] x 2285mm [7'-6"]
Bathroom	2385mm [7'-10"] x 2055mm [6'-9"]

Chester

Plot 2



GROUND FLOOR PLAN



FIRST FLOOR PLAN

Lounge	3940mm [12'-12"] x 3315mm [10'-11"]
Kitchen/Family	7980mm [26'-3"] x 7365mm [24'-2"]
Cloaks	1225mm [4'-1"] x 1825mm [5'-12"]
Utility	2350mm [7'9"] x 1825 [5'-12"]
Garage	6000mm [19'9"] x 3000 [9'-11"]

Bedroom 1	3940mm [12'-12"] x 3330mm [10'-12"]
En Suite	1225mm [4'-1"] x 2315mm [7'-8"]
Bedroom 2	3995mm [13'-2"] x 2835mm [9'-4"]
Bedroom 3	3630mm [11'11"] x 2875 [9'-6"]
Bedroom 4	3570mm [11'9"] x 3000 [9'-11"]
En Suite	1210mm [3'-12"] x 2285mm [7'-6"]
Bathroom	2385mm [7'-10"] x 2055mm [6'-9"]





Begin your story with us

Step 1

Decide on your budget, area and apply for a mortgage in principle

Step 2

Select Development / Plot

Review the site plan, brochure, floor plans and specification and choose your preferred plot.

Step 3

Pay Reservation fee

Once you have found your perfect home, we will ask you to pay a reservation fee to secure it until the exchange of contracts deadline.

Step 4

Appoint Solicitor

Appoint a solicitor or conveyancer to deal with the legal side of your purchase. Make them aware of the exchange of contracts deadline and give them a copy of your reservation form containing the full purchase details of your new Kerr home

Step 5

Full mortgage application - if applicable.

Step 6

Exchange Contract

The exchange of the contracts to buy the property is the point where the sale is legally binding. Solicitors for both sides will get the buyer and ourselves to sign a contract. By signing a contract, you agree to the terms of the sale and to buy the property and at this point you will be required to pay a deposit.

Step 7

Moving day

After the final legal tasks are complete, your solicitor will arrange for your mortgage company to pay the rest of the money to our solicitors.

When this is done, the house belongs to you and you can move in on the agreed date. This is called 'completion' and our sales representative will arrange a full handover and you will receive the keys to your new home.





We are immensely proud to be
bringing this remarkable collection of
new homes to the market,
Each displaying the meticulous
craftsmanship and premium quality.



01829 707 885