



Havefield Avenue, Boley Park, Lichfield WS14 9XS - Extended Open Plan kitchen/Living/Diner

£395,000

3 2 2



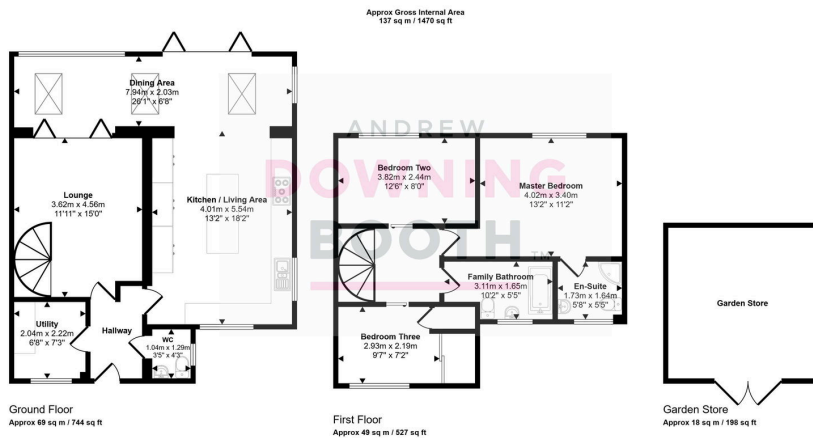
Are you looking for a spacious family home with a large and recently fitted open plan kitchen, living, diner and three double bedrooms? This extended corner plot must be viewed!

This home has been lovingly upgraded by the current owners and the downstairs living space comprises an entrance hall, a large kitchen/ living space with bi fold doors opening to the Southerly aspect garden, a lounge, cloakroom and utility room. Upstairs is a large master bedroom with an en-suite, two further double bedrooms and a family bathroom. The charming garden has been landscaped with two paved patio areas and with two separate driveways.

Situated on the popular Boley Park on a quiet cul de sac, close to all local amenities, good schools, train stations and road links.

Book in an early viewing on this wonderful home, as it is sure to be popular! Call us today to avoid disappointment.





- Extended Three Bedroom Semi-Detached Home
- Open Plan Kitchen-Living-Diner
- Master Bedroom With En-Suite
- Corner Plot
- Council Tax Band: C
- Finished To An Exceptional Standard Throughout
- All Double Bedrooms
- Highly Sought After Location
- Two Driveways

