



Church Hill, Longdon Green, Rugeley

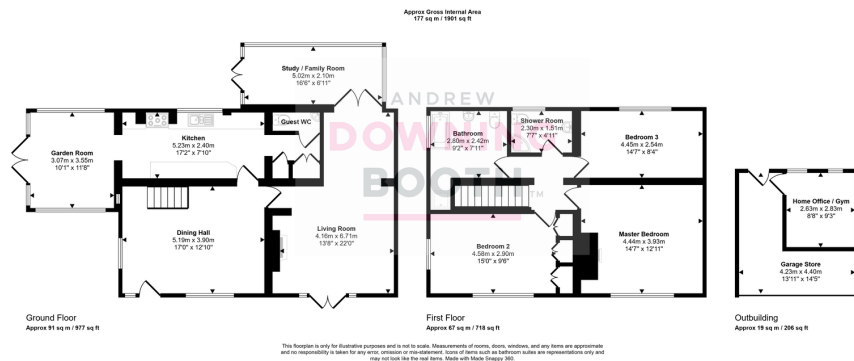
Offers Over £575,000

3 2 4



This DETACHED cottage may have fooled you once if you think it looks like a semi, but if it fools you twice and you don't book in an early viewing to beat the rush, then you'll be left bitterly disappointed! It is rare for properties to come to the market in the highly desirable village of Longdon Green, rare for traditional cottages in the area to come on, so this one really is an opportunity not to be missed, and could be described as 'rare as hen's teeth'. And how is it detached, we hear you ask? It is thought the gap was filled in to stop things blowing through the tiny gap that was previously there, so a join was created to the neighbouring property at the front, but from the rear, you can see a narrow passageway between the two cottages. The property boasts a beautiful garden, with spacious and impeccably appointed accommodation that is packed with character and enjoys a picturesque outlook over neighbouring countryside to both the front and rear. Comprising a large dining hall, spacious living room with multi fuel burning stove, family room / study, guest WC and modern kitchen with garden room off. Upstairs are three double bedrooms, a shower room and stunning family bathroom with roll top bath, which could be turned into an en-suite, by removing the shower from the bathroom and where the shower currently is, being turned into the access from the bedroom. The gardens are simply stunning, being awash with mature trees and shrubs, with a wonderful paved patio surrounding the property, giving a place to sun worship whatever time of the day. Steps lead up to the main garden which in turn leads on to a former double garage which is now a garage store with electric door and a home office / gym, with a large gated driveway sitting to the front. This is a must view home, so don't miss out and book in an early visit!





- Three Double Bedroom
- DETACHED Cottage In A Stunning Position
- Guest WC, Separate Bathroom With Roll Top Bath & Separate Shower Room
- Former Double Garage Now Turned Into A Home Office / Gym & Garage Store
- Packed Full With Character Features & Beautifully Appointed Throughout
- Family Room, Living Room With Cast Iron Multi-Fuel Burner & Modern Kitchen
- Opening onto a Garden Room Gardens & Large Block Paved Driveway

