





Garrick Road, Lichfield, WS13 7DR

£165,000

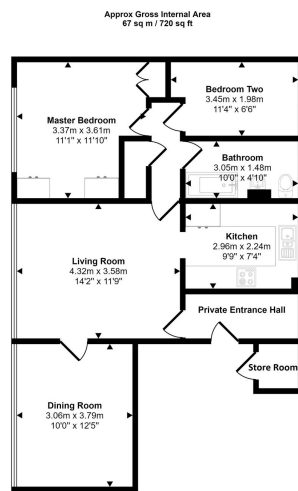
2 1 1





Now this is what we call value for money! This two / three bedroom first floor apartment comes to the market with an abundance of attractive elements, from the well maintained communal gardens through to the two good size reception rooms and to top it off, NO UPWARD CHAIN. The accommodation comprises an entrance hall, separate living and dining rooms, with the dining room having the potential to be a third bedroom if preferred, a kitchen, bathroom and two generous bedrooms. The property even comes with its own garage, with ample communal parking being available so we thoroughly recommend an early viewing. Call now to book yours!





Floorplan

This floorplan is only for illustrative purposes and is not to scale. Measurements of rooms, doors, windows, and any items are approximate and no responsibility is taken for any error, omission or mis-statement. Icons of items such as bathroom suites are representations only and may not look like the real items. Made with Made Simple 360.

- Two / Three Bedroom First Floor Apartment
- No Upward Chain
- Garage & Ample Communal Parking
- Separate Dining Room / Third Bedroom & Living Room
- Kitchen & Bathroom
- Quiet Location & Low Service Charge

