



Shropshire Brook Road, Armitage

£325,000

3 2 2



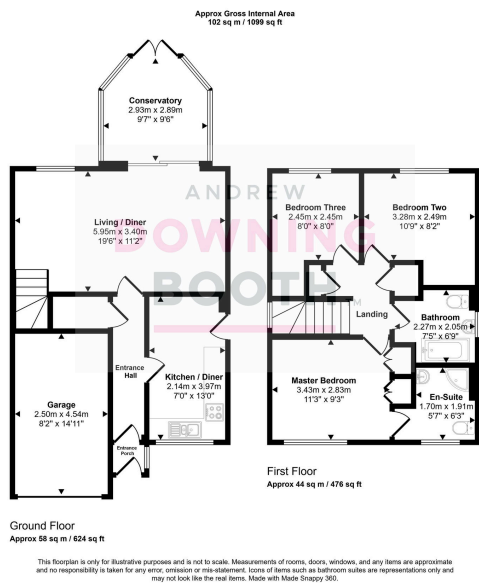
No upward chain & 360 virtual tour available - A wonderfully spacious and desirably located three bedroom detached family home, occupying a tucked away position within the popular village of Armitage.

Location-wise, the property benefits from being just a five minute drive from the stunning Cannock Chase and approximately a ten minute drive from Lichfield and its city centre, with abundant surrounding countryside offering endless scenic walks and trails.

The accommodation is light and airy throughout and set across two floors; the ground floor home to a truly fantastic living room, attractive kitchen/diner and an impressive conservatory to the rear, whilst all three bedrooms and the main family bathroom can be found to the first floor, with the Master complete with built-in wardrobes and contemporary en-suite shower room. A charming frontage consists of a driveway and lawned garden, whilst there is also a garage and mature, private garden to the rear to make up the property's exterior.

Properties that offer so much in just about every department simply must be viewed in order to be appreciated.





- Three Bedroom Detached Family Home
- Consistently Impressive Room Sizes
- Superb Conservatory Adjoined To Very Large Living Room
- Driveway, Garage & Lawned Gardens To Both Front & Rear
- EPC Rating: TBC
- No Upward Chain
- Desirable Village Location With A Tucked Away Position
- Master Bedroom With En-Suite Shower Room
- 360 Virtual Tour Available
- Council Tax Band: D

