



Lanes Close, Kings Bromley, Burton-on-Trent
£435,000

3 2 2



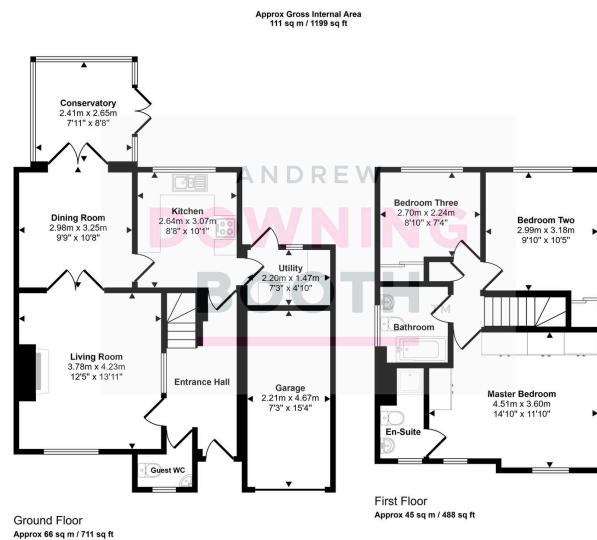
An immaculately presented three double bedroom detached family home in Lanes Close, nestled along a quiet cul-de-sac in a highly desirable location.

Location-wise, Kings Bromley is one of Staffordshire's most sought after villages, with its endless charm and scenic surrounding countryside, whilst still maintaining easy access to Lichfield, Rugeley and other surrounding areas.

The accommodation is set across two floors and boasts impressive room sizes throughout; the ground floor home to an inviting through entrance hall, two generous reception rooms, a good size kitchen, conservatory, utility and guest WC, whilst to the first floor are all three double bedrooms and the main family bathroom, with a particularly large Master complete with its own en-suite shower room. A charming frontage consists of a well-kept lawn, brick paved driveway and a garage, whilst to the rear is a particularly attractive, mature and south-facing lawned garden backing on to Kings Bromley show field; open countryside offering scenic and leafy walks.

With some modest updating in parts, this fabulous home offers an abundance of potential; we must strongly recommend booking in a viewing at your earliest availability in order to appreciate just how much is on offer.





- Three Double Bedroom Detached Family Home
- Quiet Cul-De-Sac Position Within Highly Desirable Village Of Kings Bromley
- Very Large Master Bedroom With En-Suite Shower Room
- EPC Rating: C
- Immaculately Appointed Throughout
- Consistently Generous Room Sizes
- Spacious Living Room, Dining Room & Conservatory
- Council Tax Band: E

