



Alfred Lyons Close, Abbots Bromley

£420,000

4 1 2



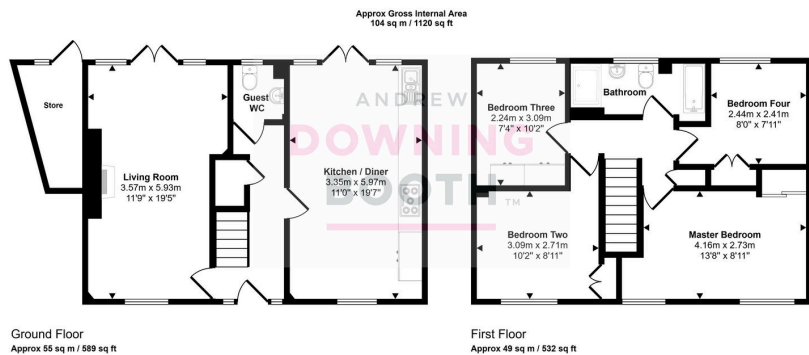
A consistently impeccably presented, light and airy four bedroom family home, nestled at the end of a leafy cul-de-sac in the incredibly sought after village of Abbots Bromley.

This superb detached property in Alfred Lyons Close enjoys a serene location with abundant surrounding countryside and Blithfield Reservoir being just a short drive away, providing endless scenic walks and trails, whilst this tremendously popular village boasts a range of charming country-style pubs and clear community spirit.

The accommodation is set across two floors, with an inviting entrance hall, very naturally bright and spacious dual aspect living room, tasteful kitchen/diner (again benefitting from a dual aspect) and guest WC all to the ground floor, whilst the first floor is home to all four bedrooms and the contemporary main bathroom with a stunning four piece suite. A charming frontage with a lawned garden, parking and integral garage is complimented by a private and simply idyllic rear garden, to make up the property's exterior.

This property excels in just about every department; we must strongly advise booking in a viewing in order to appreciate all that's on offer.





This floorplan is only for illustrative purposes and is not to scale. Measurements of rooms, doors, windows, and any items are approximate and no responsibility is taken for any error, omission or mis-statement. Icons of items such as bathroom suites are representations only and may not look like the real items. Made with Made Snappy 360.

- Four Bedroom Detached Property
- Beautifully Presented Throughout
- Impressive Room Sizes Throughout
- Charming Frontage, Garage & A Private & Idyllic Rear Garden
- EPC Rating: D
- Highly Desirable Village Location At The End Of A Leafy Cul-De-Sac
- Wonderfully Spacious Living Room & Stunning Kitchen / Diner
- Each Part Of The Home Flooded With Natural Light
- Contemporary Main Bathroom & Guest WC
- Council Tax Band: D

