





# Buddleia Avenue, Streethay, Lichfield

£695,000

5 3 3





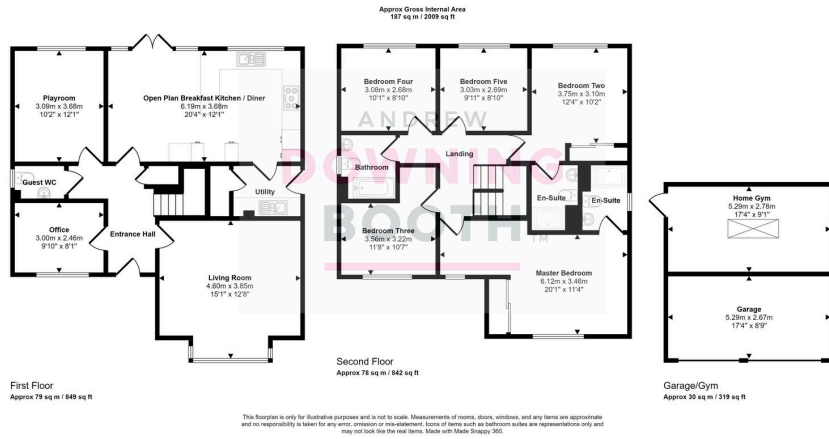
A consistently beautifully presented and substantial five double bedroom family home in a desirable and convenient part of Lichfield. Enjoying a very attractive outlook over a large neighbouring green, this thoroughly impressive detached property in Buddleia Avenue enjoys an extensive range of fabulous features, including the spectacular open plan breakfast kitchen/diner and both the Master and second bedroom boasting their own contemporary en-suite shower rooms.

Location wise, the property nestles within the increasingly popular and constantly flourishing Streethay development, with a wide range of amenities nearby, including Lichfield Trent Valley Station, eateries and supermarkets whilst only a few minutes further away is the very centre of Lichfield, with Beacon Park, Lichfield Cathedral, bars and restaurants all available.

The accommodation is set across two floors, with the ground floor featuring the aforementioned open plan breakfast kitchen/diner and various flexible additional rooms, whilst the first floor is home to the five double bedrooms and stunning main bathroom. As if all of this wasn't enough, a wonderful home gym/entertainment room/ additional office can be found to the rear part of the garage, benefitting from being fully insulated and offering a truly abundant list of potential uses. A double width driveway is complimented by a very well maintained and mature garden to make up the property's exterior



- Substantial Five Double Bedroom Detached Property
- Beautifully Presented Throughout
- Master & Bedroom Two Both With En-Suite Shower Rooms
- Spectacular Open Plan Breakfast Kitchen / Diner
- Generous Living Room Plus Additional Flexible Sitting / Play Room



Energy Efficiency Rating		
	Current	Potential
Very energy efficient - lower running costs		
(92 plus) <b>A</b>		94
(81-91) <b>B</b>	82	
(69-80) <b>C</b>		
(55-68) <b>D</b>		
(39-54) <b>E</b>		
(21-38) <b>F</b>		
(1-20) <b>G</b>		
Not energy efficient - higher running costs		
<b>England &amp; Wales</b>	EU Directive 2002/91/EC	