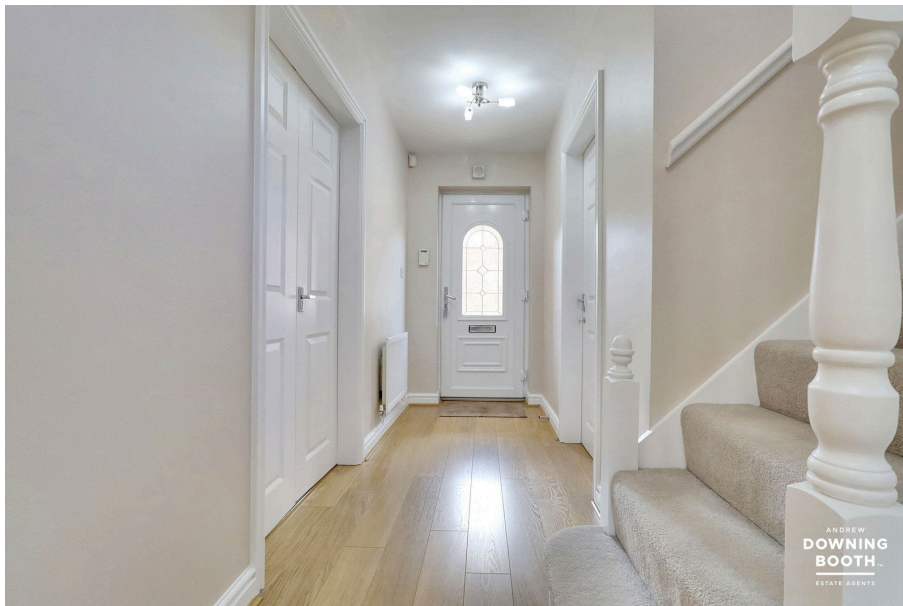




Birmingham Road, Lichfield

Offers Over £700,000

5 2 3



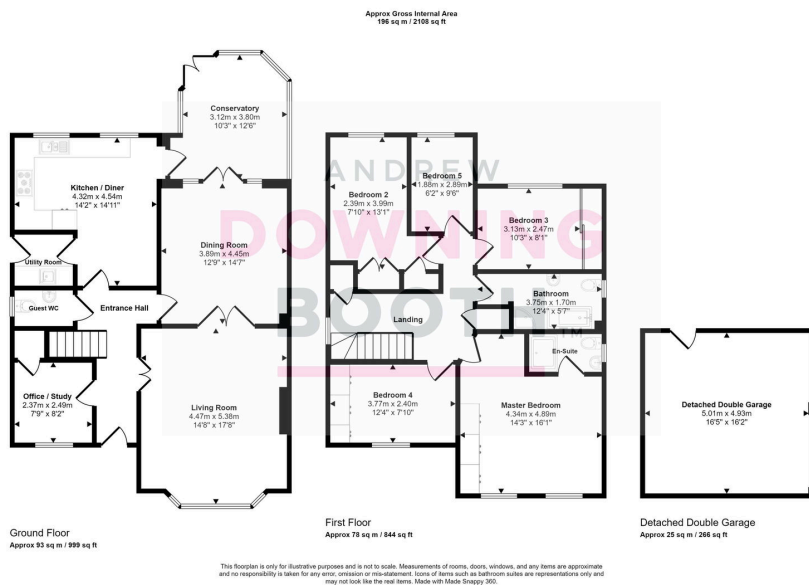
A truly exquisitely presented five bedroom family home in the South of Lichfield, just a short way from the city centre. This hugely impressive detached property is set back from the Birmingham Road and boasts an abundance of fabulous features, from the simply impeccable appointment of each and every room, to the generous range of living space and the magnificent Master bedroom with its own contemporary en-suite.

Location-wise, the property sits less than a mile from the city centre, boasting superb access to a wide range of amenities, including Beacon Park, highly rated schools, various bars/restaurants and major supermarkets, with Lichfield City train station offering direct links to Birmingham and other surrounding areas, and Shortbutts Park also just a short walk away.

The accommodation is set across two floors, each boasting various highlights; the ground floor enjoying three good size separate reception rooms and a very tasteful and high specification kitchen/diner, whilst the first floor is home to the five bedrooms and very attractive main bathroom. A brick paved driveway, detached double garage and lawned garden sit to the frontage, with a beautifully maintained and idyllic garden to the rear, featuring a pristinely kept lawn, a colourful range of shrubs and trees, and a contemporary flagstone paved patio.

Properties of this calibre, in this condition, in a location such as this, really do tick just about every box thinkable and must be inspected in person in order to appreciate quite how much is on offer.





- Detached Five Bedroom Property
- Beautifully Maintained Plot With Detached Double Garage, Driveway & Naturally Bright Kitchen / Diner With Utility Room
- Fabulous Master Bedroom With En-Suite
- EPC Rating: C
- Exquisitely Presented Throughout
- Large Living Room With Double Doors Leading Through To Dining Room & Conservatory
- Convenient Location With Excellent Access To Lichfield City Centre & Lichfield City Walking Distance To Shortbatts Park
- Council Tax Band: F

