



ANDREW  
**DOWNING**  
**BOOTH**™  
ESTATE AGENTS

# Gullick Way, Burntwood

£425,000

5 2 3



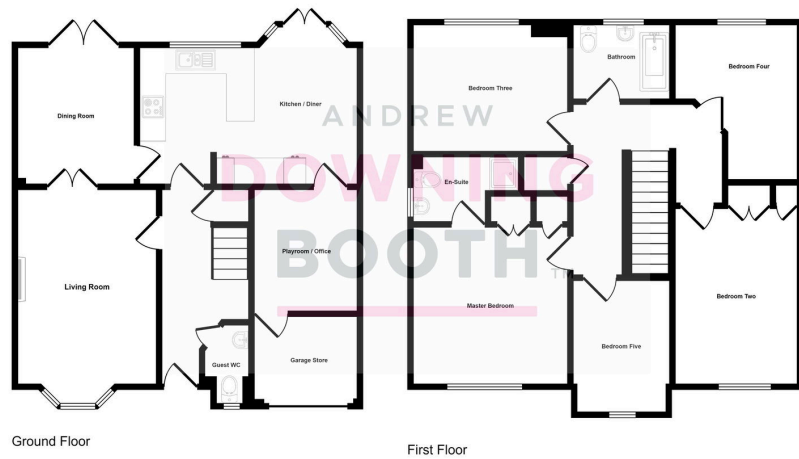
A beautifully presented and utterly spacious five bedroom family home, in a popular area with fabulous access to amenities. This impressive detached property in Gullick Way, Burntwood, comes to the market with plenty on offer in just about every department, from the consistently generous room sizes, to the incredible choice of living space and South-facing rear garden.

Location-wise, the property sits just a short drive from Lichfield and various local amenities, including transport links, surrounding countryside, Chasewater country park and the stunning Cannock Chase, offering an abundance of scenic walks for any keen ramblers.

The accommodation is set across two floors, with a welcoming entrance hall, large living room, dining room, playroom/office, naturally bright kitchen/diner and guest WC all to the ground floor, whilst the five excellent size bedrooms (Master with en-suite) and main bathroom sit to the first. A charming frontage provides ample off road parking, whilst a truly private and South-facing garden sits to the rear, offering a tranquil retreat.

Properties offering such excellence in every area simply must be viewed in order to be appreciated.





This floorplan is only for illustrative purposes and is not to scale. Measurements of rooms, doors, windows, and any items are approximate and no responsibility is taken for any error, omission or mis-statement. Icons of items such as bathroom suites are representations only and may not look like the real items. Made with Made Snappy 360.

- Five Bedroom Detached Property
- Beautifully Presented Throughout
- Fabulous Tucked Away Position In A Popular Area
- Totally Private & South-Facing Garden
- Spacious Living Room, Dining Room & Flexible Home Office / Playroom
- Consistently Generous Room Sizes Across Both Floors
- Large Master Bedroom With En-Suite
- Spacious & Naturally Bright Kitchen / Diner
- EPC Rating: TBC
- Council Tax Band: E

