



Aspen Way, Norton Canes, Cannock

£350,000

🛏️ 4 🚿 2 🚗 2

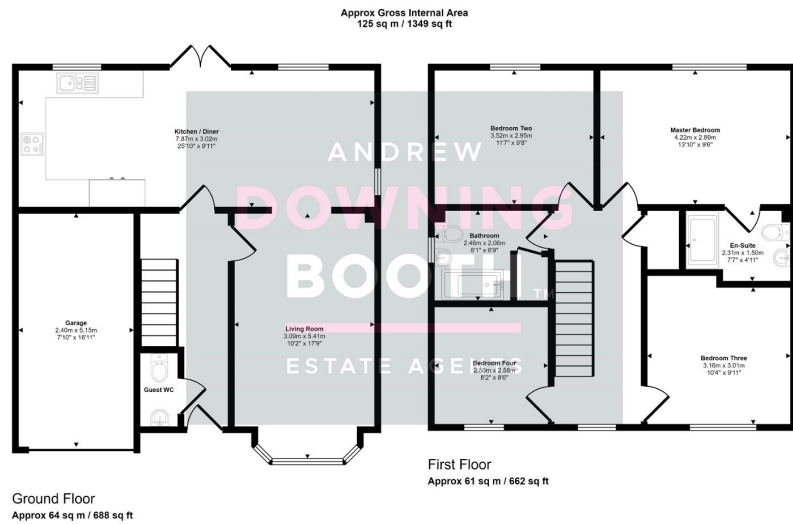


A beautifully presented four bedroom detached home, in a popular and convenient part of Norton Canes, just a very short way from the stunning Chasewater Country Park, offering an abundance of scenic walks. This impressive detached property even occupies a deceptively spacious and private plot, tucked away neatly at the end of Aspen Way.

The accommodation is set across two floors, with a through entrance hall, guest WC and a generous living room leading through to a fabulous full width kitchen/diner all to the ground floor, whilst the four good size bedrooms (Master with en-suite) and attractive main bathroom sitting to the first floor. A good size lawn and tarmac driveway sit to the frontage and are coupled with a wonderfully maintained rear garden to make up the property's exterior, whilst an integral garage offers excellent additional storage.

This property ticks just about all of the boxes; a viewing really is imperative to appreciate just how much is on offer.





This floorplan is only for illustrative purposes and is not to scale. Measurements of rooms, doors, windows, and any items are approximate and no responsibility is taken for any error, omission or mis-statement. Icons of items such as bathroom suites are representations only and may not look like the real items. Made with Made Sprayy 360.

- Four Bedroom Detached Property
- Very Well Presented Throughout
- Fabulous Full Width Kitchen / Diner With Separate Spacious Living Room
- Quiet Position & Popular, Convenient Location
- Wonderful Master Bedroom With En-Suite
- Spacious & Private Corner Plot
- EPC Rating: B
- Council Tax Band: E

