



ANDREW
DOWNING
BOOTH™
ESTATE AGENTS

Burton Old Road, Streethay, Lichfield

£475,000

🛏️ 4 🚿 2 🛋️ 2



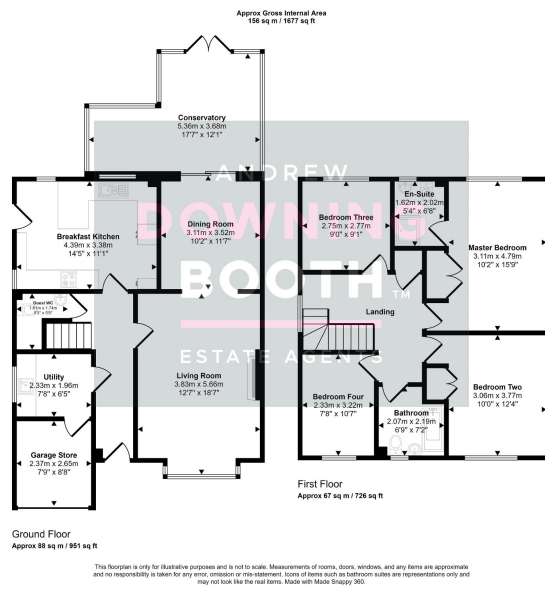
A fabulous opportunity for a desirably located four double bedroom home in Lichfield, offering plenty in every department. This impressive property in Burton Old Road, Streethay, comes to the market with an abundance of fantastic features, from the exceptional living space through to the private, attractive and low maintenance rear garden.

Location-wise, the property benefits from sitting within the catchments for the highly rated King Edwards VI secondary school and Streethay primary school, and is less than a mile from Lichfield Trent Valley train station, with direct links to London and Birmingham, whilst in the opposite direction within walking distance is the Streethay development with various amenities available such as a Co-op and eateries. Just slightly further on is the A38, again providing an easy commute to Birmingham and other surrounding areas.

The accommodation is set across two floors, with an inviting through entrance hall, large living room naturally leading through to the dining room and spacious conservatory, contemporary breakfast kitchen, utility room and guest WC all to the ground floor, whilst the four double bedrooms (Master with en-suite) and, again contemporary, bathroom sit to the first. A charming and set-back plot is made up of a good size driveway, garage store and well maintained rear garden.

Properties that tick this many boxes simply must be viewed in order to be appreciated.





- Four Double Bedroom Detached Property
- Fabulous Living Room Leading Through To The Dining Room & Conservatory
- Impressive Master Bedroom With En-Suite
- EPC Rating: C
- Convenient & Desirable Location, Close To Lichfield Trent Valley Station
- Stunning Breakfast Kitchen
- Spacious Driveway, Attractive & Well Maintained Garden
- Council Tax Bill: E

