



ANDREW  
**DOWNING**  
**BOOTH**™  
ESTATE AGENTS



# Rocklands Crescent, Lichfield

£350,000

3 2 2





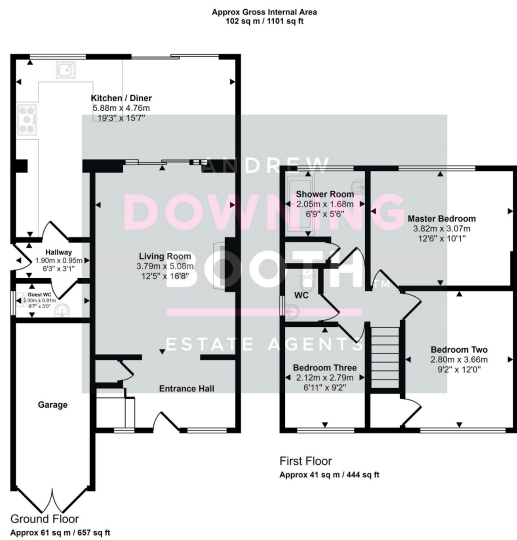
A beautifully presented three bedroom home in a very popular part of Lichfield. This fabulous semi-detached property in Rocklands Crescent comes to the market with an abundance of attractive features, from the stunning kitchen/diner with large sliding doors out to the garden, to the idyllic and very private South-West facing garden.

Location-wise, the property sits comfortably less than a mile from the city centre, boasting a close proximity to many of Lichfield's amenities, including major supermarkets, both Lichfield train stations and Beacon Park. The accommodation is set across two floors, with an entrance hall, beautifully presented living room, kitchen/diner and guest WC all to the ground floor, whilst the three bedrooms, shower room and WC all to the first floor. A spacious driveway is complimented by a garage and the aforementioned wonderful garden to make up the property's exterior.

Ample living space, impeccable presentation and a very convenient location; we must advise booking in a viewing at your earliest convenience







This floorplan is only for illustrative purposes and is not to scale. Measurements of rooms, doors, windows, and any items are approximate and no responsibility is taken for any error, omission or mis-statement. Icons of items such as bathroom suites are representations only and may not look like the real items. Made with Made Snappy 300.

- Three Bedroom Semi-Detached Property
- Beautifully Presented Throughout
- Stunning Kitchen / Diner
- Highly Private & Very Attractive South-West Facing Garden
- Desirable & Convenient Location Close To Amenities
- Generous Driveway & Garage
- EPC Rating: D
- Council Tax Band: C

