



Walkers Croft, Lichfield

£300,000

🛏️ 3 🚿 1 🪑 3

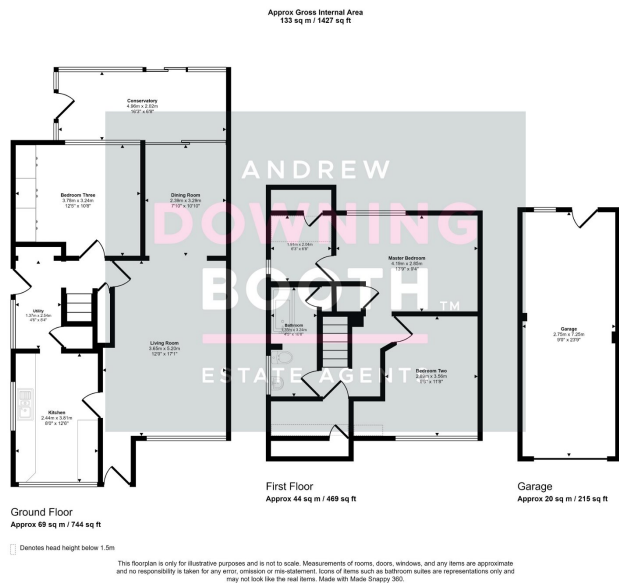


A wonderful opportunity to acquire a fabulous three bedroom dormer bungalow in a popular part of Lichfield, with the rare added benefit of having no upward chain. This impressive semi-detached property in Walkers Croft comes to the market with plenty on offer, from the generous living space, to the attractive plot nestled within a quiet cul-de-sac.

Location-wise, the property sits less than a mile from the very centre of Lichfield, providing access to a wide range of amenities, including both Lichfield train stations, Beacon Park, various bars/restaurants and the scenic Stowe Pool that sits just a few minutes' walk away. The accommodation is set across two floors, with a very large living room, dining room, kitchen, utility room and bedroom three all sitting to the ground floor, whilst the two main double bedrooms (Master with flexible dressing room) and bathroom occupy the first floor. A private plot consists of well maintained gardens to both the front and rear, coupled with a generous driveway and garage.

No upward chain, generous living space, three double bedrooms and a tranquil cul-de-sac location; four characteristics typically associated with properties with a higher price tag attached, so we must advise booking in a viewing at your earliest convenience.





- Three Double Bedroom Semi-Detached Dormer Bungalow
- Very Popular Location Close To Lichfield City Centre
- Living Room, Dining Room & Conservatory
- EPC Rating: TBC
- No Upward Chain
- Private, Spacious & Attractive Plot With Garage
- Kitchen & Utility
- Council Tax Band: C

