



Beacon Street, Lichfield, WS13 7DG

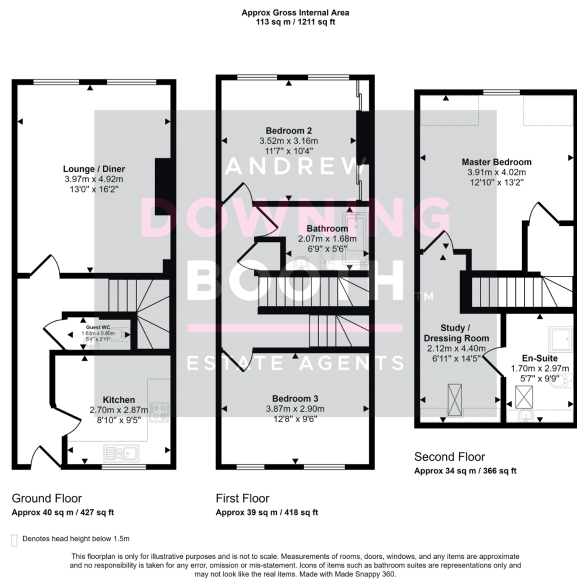
Offers Over £300,000

3 2 1



There is a lot of property for the money here, and this is a home that would suit someone looking for plenty of accommodation whilst having remaining as low maintenance as possible. The property sits in a convenient spot close to both Beacon Park and Lichfield City Centre. Comprising a through entrance hall, guest WC, large lounge diner and kitchen all to the ground floor. The first floor has two very generous double bedrooms and a bathroom with the second storey accommodation comprising an impressive master suite with stunning en-suite and study, which could easily be turned into a dressing room if preferred. Outside is a low maintenance plot, with a double width driveway to the front of the plot and a small but functional front garden with lawn and paved patio. This is a property that needs to be viewed to be appreciated so call us today and book in your visit!





- Three Double Bedroom
- Convenient Spot Close To Storey Townhouse
- Guest WC, Bathroom & Stunning Contemporary En-Suite
- Large Lounge Diner & Kitchen
- Double Width Drive & Enclosed Rear Garden
- Dressing Room / Study

