



Millbank Cottages, Nicholls Lane, Stone

£250,000

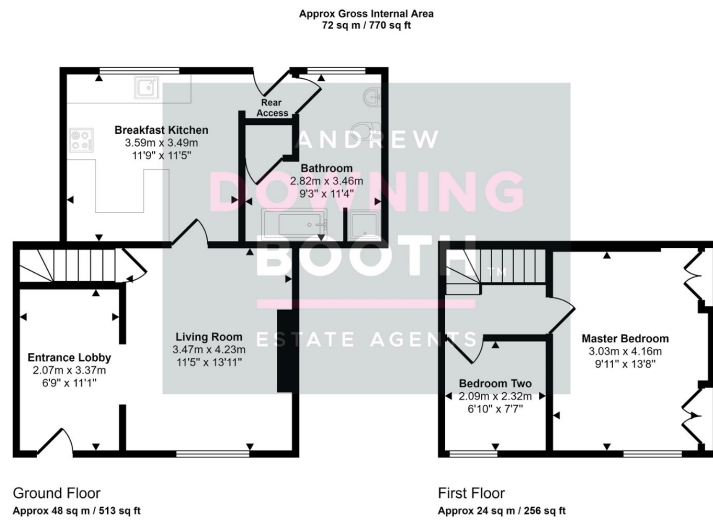
🛏️ 2 🪑 1 🚗 1



A rare opportunity to acquire a very charming and beautifully presented two bedroom cottage in a desirable, semi-rural location. This endearing and deceptively spacious mid-terrace property on Nicholls Lane of Oulton in Stone, comes to the market with an impressive range of features, from the exceptional presentation, to the charming setting, original character features throughout and even having no upward chain, enabling a move to go through more quickly and seamlessly.

The accommodation itself is set across two floors, with an entrance hall/study, living room, attractive breakfast kitchen and very spacious bathroom all to the ground floor and all benefitting from exposed timber beams, whilst to the first floor are the two main bedrooms, with a good size Master bedroom having an exposed brick wall with fitted wardrobes to either side. An attractive and private garden sits to the rear. Location wise, the property sits in the always desirable area of Stone, with the perfect blend of semi-rural living offering stunning country walks and scenery whilst still being close to amenities including supermarkets and transport links, noting Stone railway station being just a mile away. A viewing is essential to appreciate all on offer.





This floorplan is only for illustrative purposes and is not to scale. Measurements of rooms, doors, windows, and any items are approximate and no responsibility is taken for any error, omission or mis-statement. Icons of items such as bathroom suites are representations only and may not look like the real items. Made with Made Snappy 360.

- Two Bedroom Mid-Terrace Cottage
- No Upward Chain
- Stunning Breakfast Kitchen
- EPC Rating: E
- Character Features Throughout Including Exposed Timber Beams
- Beautifully Presented Throughout
- Desirable, Semi-Rural Location & Setting
- Council Tax Band: B

