



NEWCASTLE UPON TYNE

A DEVELOPMENT BY



RISE ABOVE

THE BEST TWO, THREE AND FOUR BEDROOM HOMES

ONLY 10 MINUTES FROM
NEWCASTLE CITY CENTRE

RISE AND SHINE

WAKE UP TO THE PERFECT LOCATION

The Rise brings a new kind of living to Scotswood. It gives you a collection of our finest new homes in a range of contemporary designs that are ideal for modern life.

There is a choice of 2, 3 and 4 bedroom homes and apartments available which makes The Rise your perfect development whether you're a first time buyer or looking to move up to something bigger. With panoramic views of the River Tyne and the City Centre being only minutes away, it's a location that offers it all.

keepmoat.com





CHARACTERI



SE

CONTEMPORARY HOMES
FOR MODERN LIVING



ALL

RISE

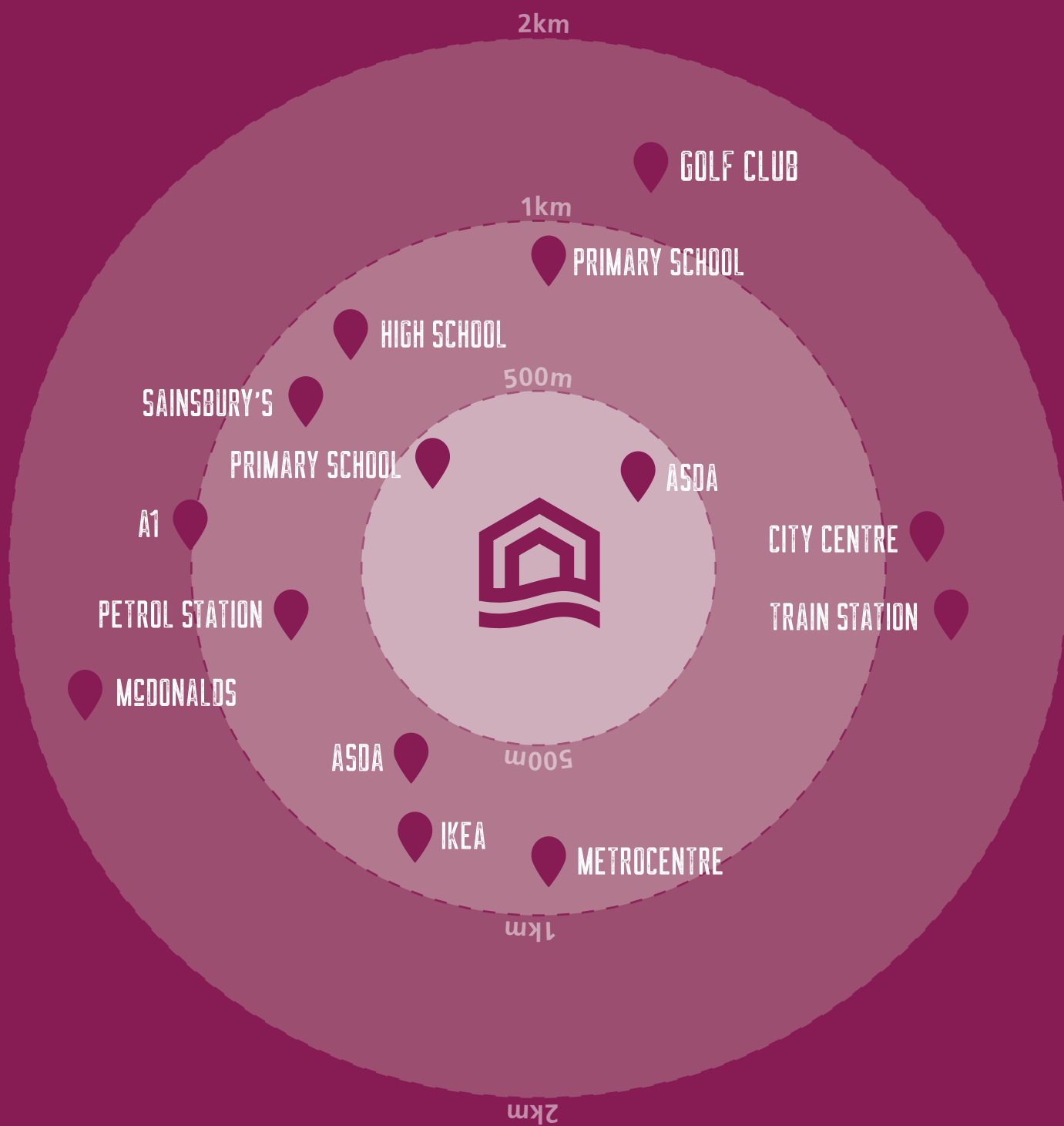
EVERYTHING
IS HERE FOR
YOU

The Rise is found on the banks of the River Tyne on the western edge of Newcastle. Its elevated position gives beautiful views of the river and surrounding area.

Being just three miles from the City Centre and with superb transport links, the development location puts the whole City within easy reach. You are also less than a mile from the A1 so getting around the wider region is simple. For those who enjoy jetting off for some sunshine, Newcastle International Airport is less than 15 minutes away.

There is a great selection of local amenities on offer in the area; with schools, shops and parks all within walking distance. If you need a wider choice then the Metrocentre is just over the river and Hadrian's Way, a pretty walking and cycling route, is also located at the edge of the development.





*Distances are estimated and for guidance purposes only.

GLAMOURIS

THE CITY AWAITS

Once famed for its shipbuilding, Newcastle is now more renowned for its buzzing nightlife. With a fantastic selection of high quality restaurants, bars and clubs around the Quayside and Bigg Market; it's a City that rarely sleeps.

The skyline is dominated by St. James' Park, home of Newcastle United and match days always create extra excitement around the City Centre.

For those who enjoy a bit of culture; the Theatre Royal, Life Museum, the Baltic Centre, the iconic Sage in Gateshead and the Laing Art Gallery will keep you entertained time and again. Shoppers are also well catered for, whether independent boutiques or the bigger high street names are the preferred choice.

Venturing a bit further afield brings some spectacular countryside for family days out or walking the dog. Northumberland National Park and Hadrian's Wall are two of the most famous local areas of interest and there is also mile upon mile of stunning coastline for you to enjoy.





FAMILIARISE

HOUSETYPE KEY

	THE ALSTON 2 BEDROOM HOME		THE CORBRIDGE 3 BEDROOM HOME
	THE GREYSTEAD 2 BEDROOM HOME		THE CHOLLERFORD 3 BEDROOM HOME
	THE KIELDER 2 BEDROOM HOME		THE WARK 3 BEDROOM HOME
	THE FEATHERSTONE 2 BEDROOM HOME		THE MILLHOUSE 3 BEDROOM HOME
	THE HAYDON 2 BEDROOM HOME		THE HEXHAM 4 BEDROOM HOME
	THE STYFORD 3 BEDROOM HOME		THE CHESTERS 4 BEDROOM HOME
	THE BYWELL 3 BEDROOM HOME		THE WYLAM 4 BEDROOM HOME
	THE RIDLEY 3 BEDROOM HOME		THE CALLERTON 2 BEDROOM APARTMENT
	THE LAMBLEY 3 BEDROOM HOME		THE MONTAGU 2 BEDROOM APARTMENT
	THE FALSTONE 3 BEDROOM HOME		AFFORDABLE HOMES
	THE NEWBURN 3 BEDROOM HOME		

FUTURE SALES AREA

SHOWHOMES

PLOTS 17-05, 17-06, 17-07, 17-08 & 17-09

SALES INFORMATION CENTRE

PLOT 17-03, 17-04



Please Note: This site plan is only a guide to the above development. It does not bind or imply that the layout will be as indicated. Please see our Sales Executive for full specification and plot details at this development.

keepmoat.com

THE DEVELOPMENT LAYOUT



SHOWHOMES

PLOTS 8-12, 8-13 & 8-14



SALES INFORMATION CENTRE

PLOT 8-15





ALSTON

2 BEDROOM HOME





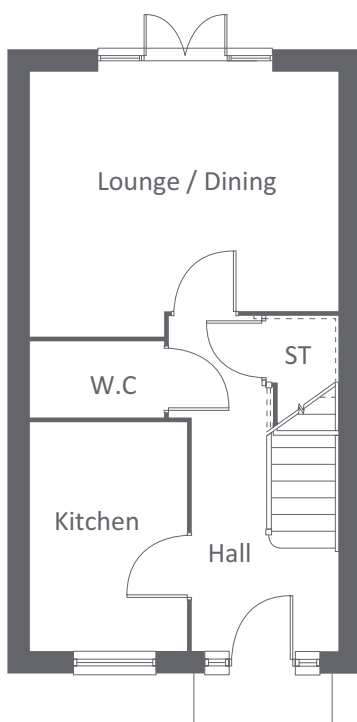
2 BEDROOM HOME

GROUND FLOOR

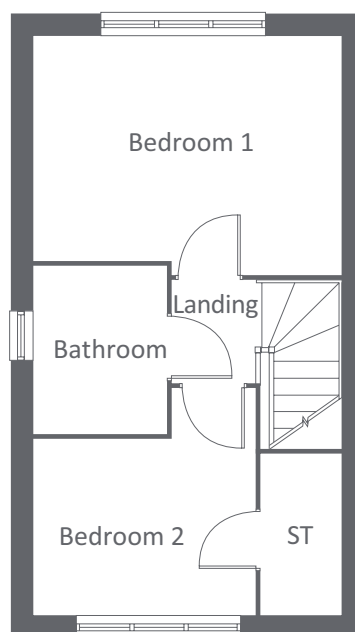
LOUNGE/DINING	4185 x 3586	13'8" x 11'9"
KITCHEN	3098 x 2110	10'1" x 6'11"
W.C	1795 x 1020	5'10" x 3'4"

FIRST FLOOR

BEDROOM 1	4185 x 3235	13'8" x 10'7"
BEDROOM 2 (INCLUDING WARDROBES)	3012 x 2385	9'10" x 7'9"
BATHROOM	2284 x 1773	7'5" x 5'9"



GROUND FLOOR



FIRST FLOOR

keepmoat.com



These measurements should not be used for the purchase of carpets and curtains. All dimensions are + or - 50mm and floor plans are not shown to scale. Electrical, plumbing and kitchen layouts are available from the Sales Information Centre. These particulars do not wholly or in part constitute a contract or agreement and are for general guidance only. Artist's impressions are used for illustration purposes only. Elevations, external treatments, chimney's, brick, roof tile colour and window positions may vary. Please see our Sales Executive for full specification and plot details at this development.



CALLERTON

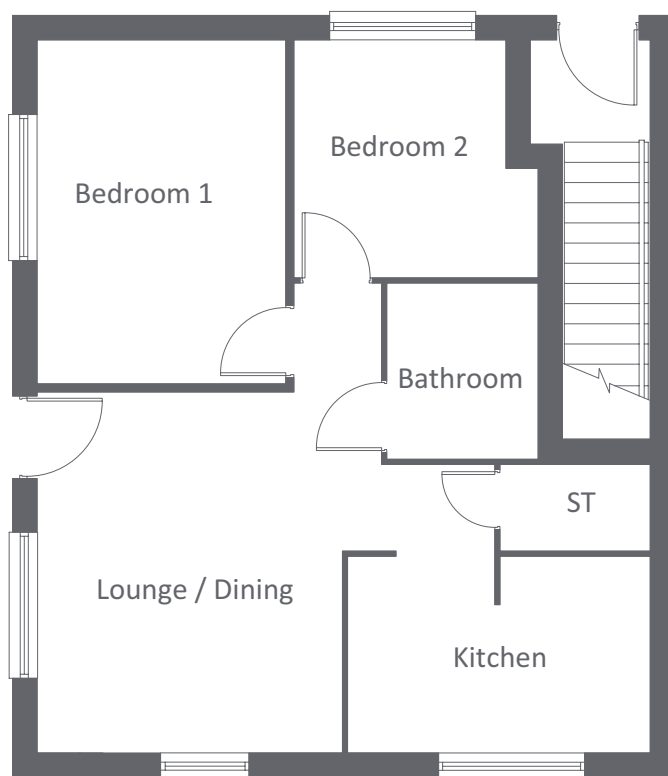
2 BEDROOM APARTMENT





LOUNGE / DINING	3744 x 4433	12'3" x 14'6"
KITCHEN	3710 x 2398	12'2" x 7'10"
BEDROOM 1	3032 x 4212	9'11" x 13'10"
BEDROOM 2	2965 x 2977	9'9" x 9'7"
BATHROOM	1836 x 2154	6'0" x 7'1"

2 BEDROOM APARTMENT



keepmoat.com



These measurements should not be used for the purchase of carpets and curtains. All dimensions are + or - 50mm and floor plans are not shown to scale. Electrical, plumbing and kitchen layouts are available from the Sales Information Centre. These particulars do not wholly or in part constitute a contract or agreement and are for general guidance only. Artist's impressions are used for illustration purposes only. Elevations, external treatments, chimney's, brick, roof tile colour and window positions may vary. Please see our Sales Executive for full specification and plot details at this development.



FEATHERSTONE

2 BEDROOM HOME





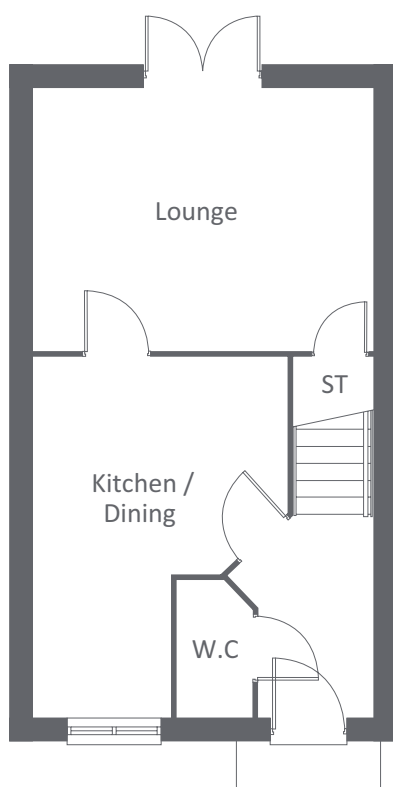
2 BED ROOM HOME

GROUND FLOOR

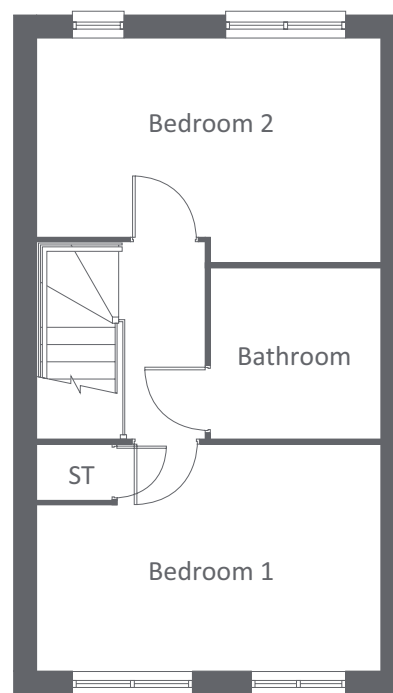
LOUNGE	4510 x 3463	14'10" x 11'4"
KITCHEN / DINING	3380 x 4779	11'1" x 15'8"
W.C	993 x 1812	3'3" x 5'9"

FIRST FLOOR

BEDROOM 1	4510 x 2973	14'10" x 9'9"
BEDROOM 2	4510 x 2937	14'10" x 9'8"
BATHROOM	2226 x 2239	7'4" x 7'3"



GROUND FLOOR



FIRST FLOOR

keepmoat.com



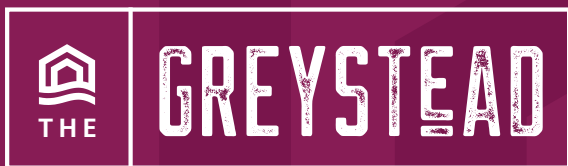
These measurements should not be used for the purchase of carpets and curtains. All dimensions are + or - 50mm and floor plans are not shown to scale. Electrical, plumbing and kitchen layouts are available from the Sales Information Centre. These particulars do not wholly or in part constitute a contract or agreement and are for general guidance only. Artist's impressions are used for illustration purposes only. Elevations, external treatments, chimney's, brick, roof tile colour and window positions may vary. Please see our Sales Executive for full specification and plot details at this development.



GREYSTEAD

2 BEDROOM HOME





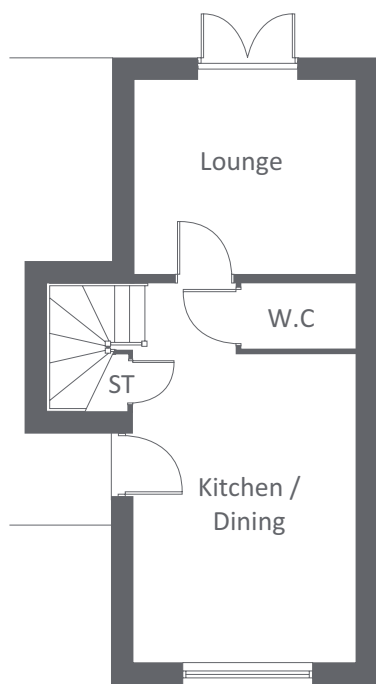
2 BED ROOM HOME

GROUND FLOOR

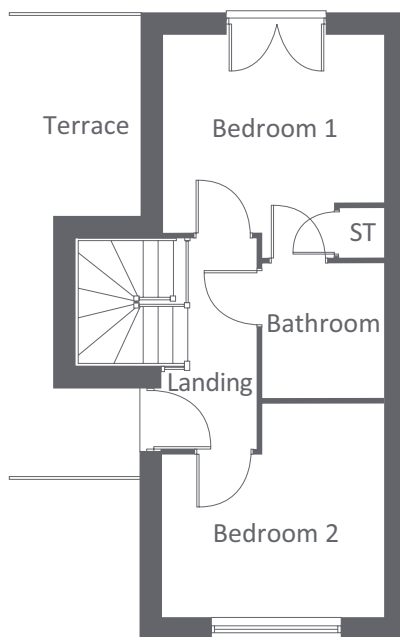
LOUNGE	3503 x 3042	11'5" x 9'11"
KITCHEN/DINING	4917 x 3503	16'1" x 11'5"
W.C	1810 x 988	5'11" x 3'2"

FIRST FLOOR

BEDROOM 1	3503 x 3079	11'5" x 10'1"
BEDROOM 2	3503 x 3322	11'5" x 10'10"
BATHROOM	2139 x 1903	7'0" x 6'2"



GROUND FLOOR



FIRST FLOOR

keepmoat.com



These measurements should not be used for the purchase of carpets and curtains. All dimensions are + or - 50mm and floor plans are not shown to scale. Electrical, plumbing and kitchen layouts are available from the Sales Information Centre. These particulars do not wholly or in part constitute a contract or agreement and are for general guidance only. Artist's impressions are used for illustration purposes only. Elevations, external treatments, chimney's, brick, roof tile colour and window positions may vary. Please see our Sales Executive for full specification and plot details at this development.



HAYDON

2 BEDROOM HOME





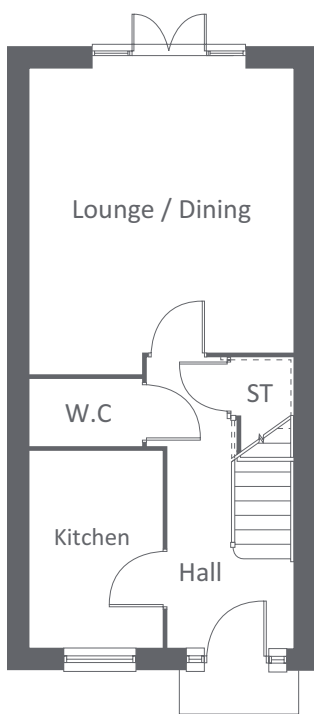
2 BEDROOM HOME

GROUND FLOOR

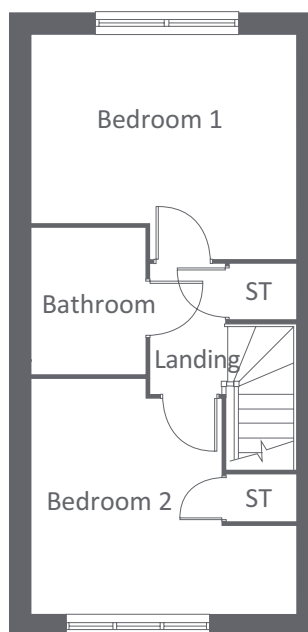
LOUNGE/DINING	4763 x 4185	15'7" x 13'8"
KITCHEN	3098 x 2110	10'1" x 6'11"
W.C	1795 x 1033	5'10" x 3'4"

FIRST FLOOR

BEDROOM 1	4185 x 3532	13'8" x 11'7"
BEDROOM 2	4185 x 3687	13'8" x 12'1"
BATHROOM	2284 x 1798	7'5" x 5'10"



GROUND FLOOR



FIRST FLOOR

keepmoat.com



These measurements should not be used for the purchase of carpets and curtains. All dimensions are + or - 50mm and floor plans are not shown to scale. Electrical, plumbing and kitchen layouts are available from the Sales Information Centre. These particulars do not wholly or in part constitute a contract or agreement and are for general guidance only. Artist's impressions are used for illustration purposes only. Elevations, external treatments, chimney's, brick, roof tile colour and window positions may vary. Please see our Sales Executive for full specification and plot details at this development.



KIELDER

2 BEDROOM HOME





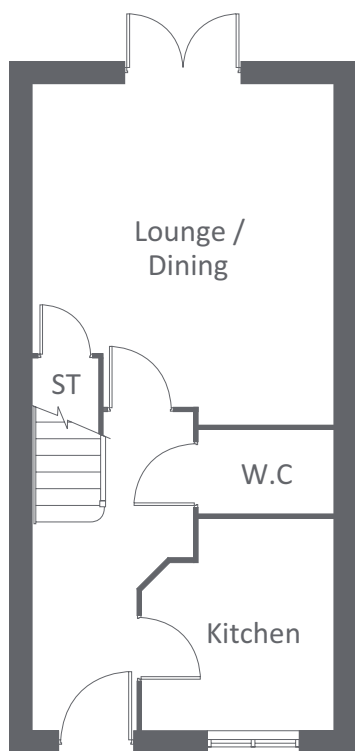
2 BED ROOM HOME

GROUND FLOOR

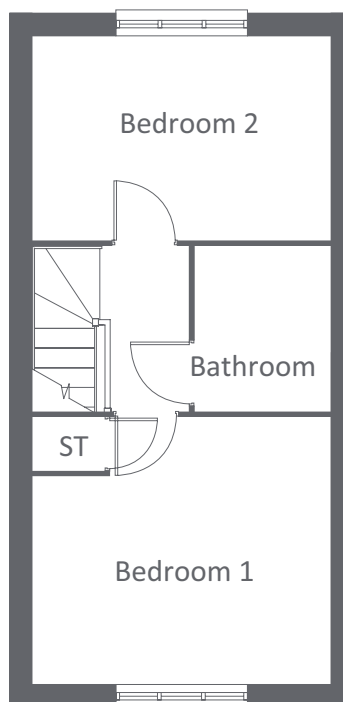
LOUNGE / DINING	4060 x 4618	13'4" x 15'2"
KITCHEN	2585 x 2863	8'6" x 9'5"
W.C	1858 x 1119	6'1" x 3'8"

FIRST FLOOR

BEDROOM 1	4060 x 3612	13'4" x 11'10"
BEDROOM 2	4060 x 2748	13'4" x 9'0"
BATHROOM	1846 x 2239	6'1" x 7'4"



GROUND FLOOR



FIRST FLOOR

keepmoat.com



These measurements should not be used for the purchase of carpets and curtains. All dimensions are + or - 50mm and floor plans are not shown to scale. Electrical, plumbing and kitchen layouts are available from the Sales Information Centre. These particulars do not wholly or in part constitute a contract or agreement and are for general guidance only. Artist's impressions are used for illustration purposes only. Elevations, external treatments, chimney's, brick, roof tile colour and window positions may vary. Please see our Sales Executive for full specification and plot details at this development.



THE

MONTAGU

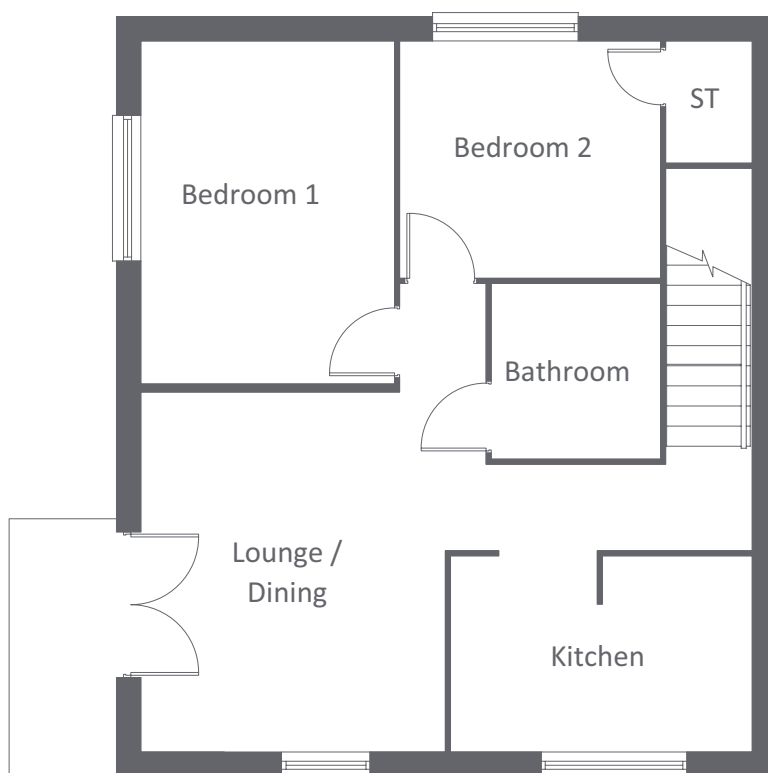
2 BEDROOM APARTMENT





2 BEDROOM APARTMENT

LOUNGE / DINING	3744 x 4423	12'3" x 14'6"
KITCHEN	3710 x 2398	12'2" x 7'10"
BEDROOM 1	3112 x 4212	10'3" x 13'10"
BEDROOM 2	3215 x 2910	10'6" x 9'7"
BATHROOM	2065 x 2154	6'9" x 7'1"



keepmoat.com



These measurements should not be used for the purchase of carpets and curtains. All dimensions are + or - 50mm and floor plans are not shown to scale. Electrical, plumbing and kitchen layouts are available from the Sales Information Centre. These particulars do not wholly or in part constitute a contract or agreement and are for general guidance only. Artist's impressions are used for illustration purposes only. Elevations, external treatments, chimney's, brick, roof tile colour and window positions may vary. Please see our Sales Executive for full specification and plot details at this development.



BYWELL

3 BEDROOM HOME





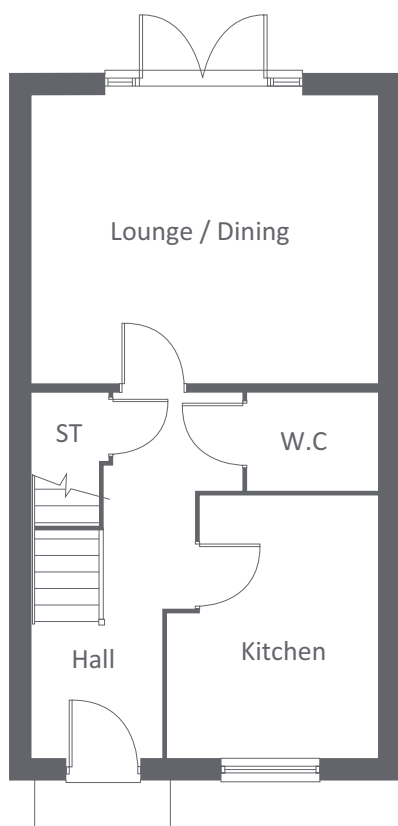
3 BEDROOM HOME

GROUND FLOOR

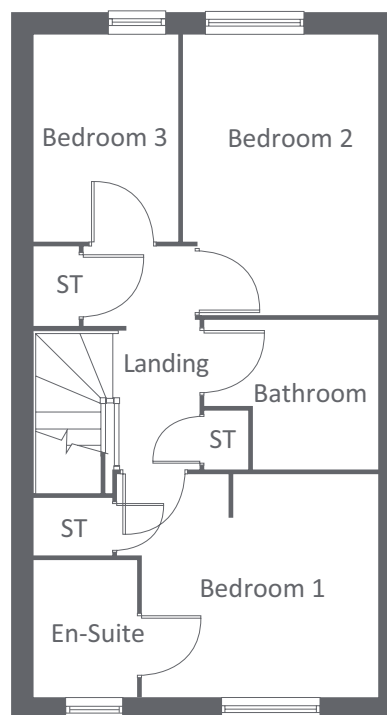
LOUNGE/DINING	4740 x 3953	15'6" x 12'11"
KITCHEN	3597 x 2878	11'9" x 9'5"
W.C	1810 x 1335	5'11" x 4'4"

FIRST FLOOR

BEDROOM 1	3237 x 3047	10'7" x 9'11"
EN-SUITE	1855 x 1410	6'1" x 4'7"
BEDROOM 2	3850 x 2699	12'7" x 8'10"
BEDROOM 3	2837 x 1948	9'3" x 6'4"
BATHROOM	2378 x 2045	7'9" x 6'8"



GROUND FLOOR



FIRST FLOOR

keepmoat.com



These measurements should not be used for the purchase of carpets and curtains. All dimensions are + or - 50mm and floor plans are not shown to scale. Electrical, plumbing and kitchen layouts are available from the Sales Information Centre. These particulars do not wholly or in part constitute a contract or agreement and are for general guidance only. Artist's impressions are used for illustration purposes only. Elevations, external treatments, chimney's, brick, roof tile colour and window positions may vary. Please see our Sales Executive for full specification and plot details at this development.



3 BEDROOM HOME





3 BEDROOM HOME

GROUND FLOOR

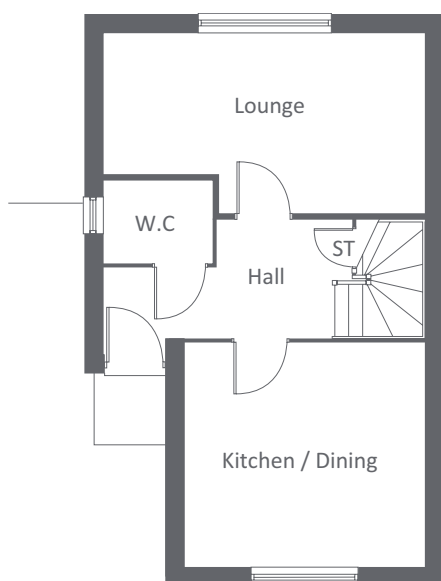
LOUNGE	5415 x 2990	17'9" x 9'9"
KITCHEN/DINING	4065 x 3725	13'4" x 12'2"
W.C	1813 x 1373	5'11" x 4'2"

FIRST FLOOR

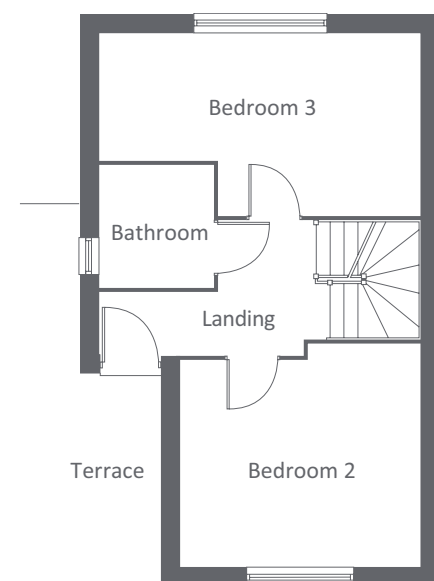
BEDROOM 2	4065 x 3725	13'4" x 12'2"
BEDROOM 3	5415 x 2990	17'9" x 9'9"
BATHROOM	2294 x 1962	7'6" x 6'5"

SECOND FLOOR

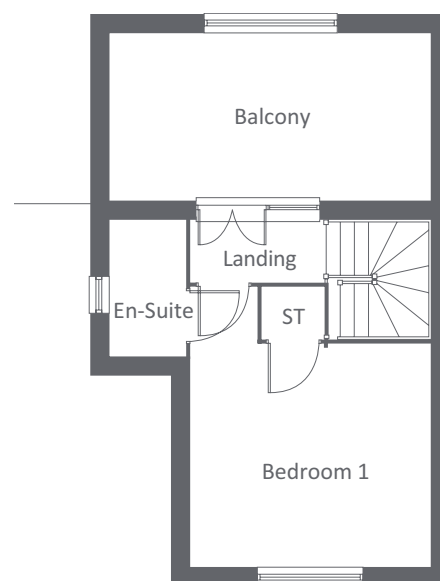
BEDROOM 1	4065 x 3725	13'4" x 12'2"
EN-SUITE	2276 x 1260	7'5" x 4'1"



GROUND FLOOR



FIRST FLOOR



SECOND FLOOR

keepmoat.com



These measurements should not be used for the purchase of carpets and curtains. All dimensions are + or - 50mm and floor plans are not shown to scale. Electrical, plumbing and kitchen layouts are available from the Sales Information Centre. These particulars do not wholly or in part constitute a contract or agreement and are for general guidance only. Artist's impressions are used for illustration purposes only. Elevations, external treatments, chimney's, brick, roof tile colour and window positions may vary. Please see our Sales Executive for full specification and plot details at this development.



CORBRIDGE

3 BEDROOM HOME





3 BEDROOM HOME

GROUND FLOOR

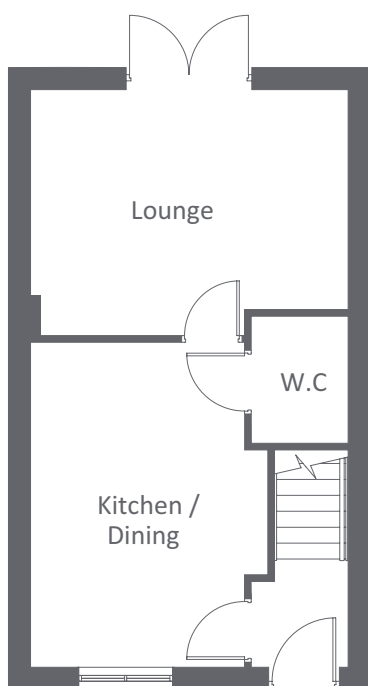
LOUNGE	4510 x 3520	14'10" x 11'6"
KITCHEN / DINING	3380 x 4610	11'1" x 15'1"
W.C	1390 x 1821	4'7" x 5'10"

FIRST FLOOR

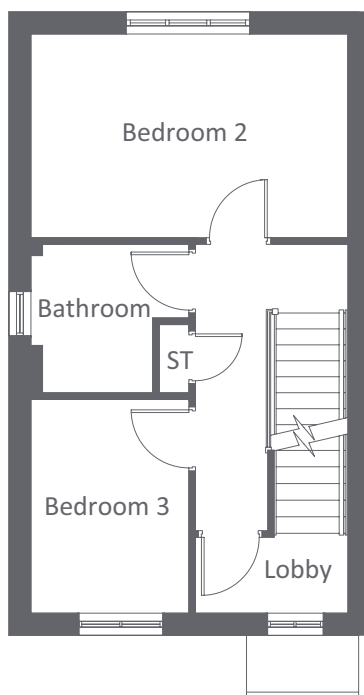
BEDROOM 2	4510 x 2870	14'10" x 9'5"
BEDROOM 3	2233 x 3048	7'4" x 10'0"
BATHROOM	2232 x 2119	7'4" x 6'11"

SECOND FLOOR

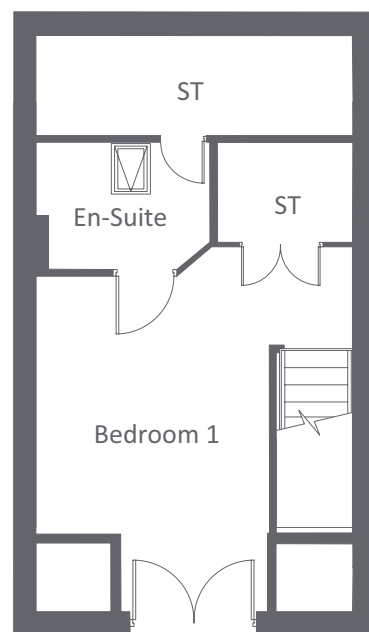
BEDROOM 1	4510 x 6717	14'10" x 22'0"
EN-SUITE	2494 x 1825	8'2" x 6'0"



GROUND FLOOR



FIRST FLOOR



SECOND FLOOR

keepmoat.com



These measurements should not be used for the purchase of carpets and curtains. All dimensions are + or - 50mm and floor plans are not shown to scale. Electrical, plumbing and kitchen layouts are available from the Sales Information Centre. These particulars do not wholly or in part constitute a contract or agreement and are for general guidance only. Artist's impressions are used for illustration purposes only. Elevations, external treatments, chimney's, brick, roof tile colour and window positions may vary. Please see our Sales Executive for full specification and plot details at this development.



FALSTONE

3 BEDROOM HOME





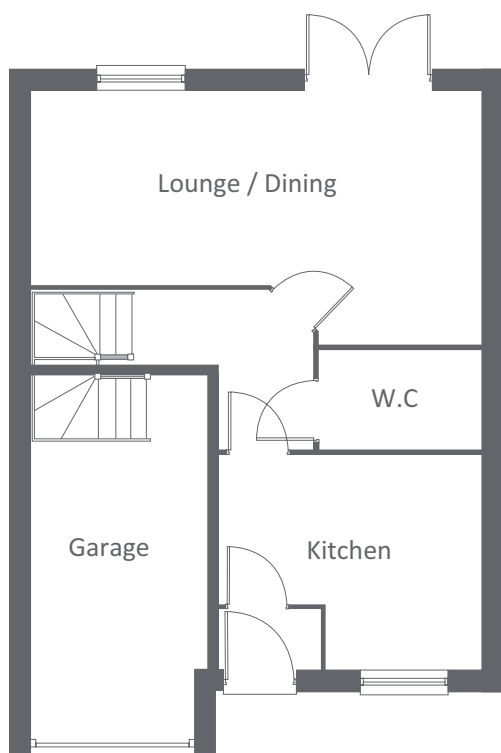
3 BEDROOM HOME

GROUND FLOOR

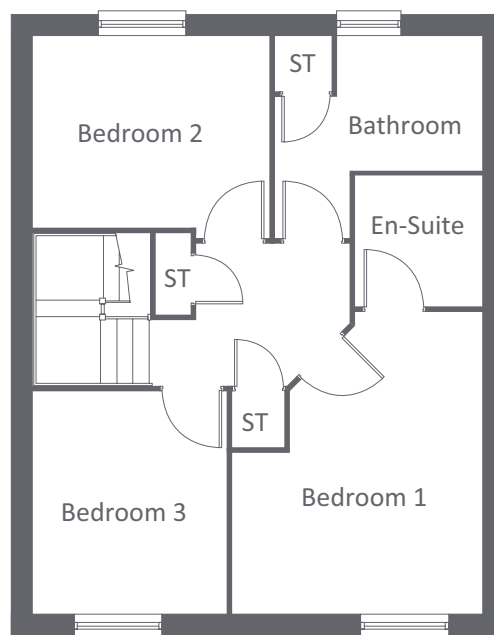
LOUNGE / DINING	6310 x 2711	20'8" x 8'11"
KITCHEN	3672 x 2997	12'1" x 9'10"
W.C	2275 x 1381	7'6" x 4'6"

FIRST FLOOR

BEDROOM 1	3502 x 4228	11'6" x 13'10"
EN-SUITE	1773 x 1831	5'10" x 6'0"
BEDROOM 2	3312 x 2711	10'10" x 8'11"
BEDROOM 3	2715 x 3093	8'11" x 10'2"
BATHROOM	2904 x 2825	9'6" x 9'3"



GROUND FLOOR



FIRST FLOOR

keepmoat.com



These measurements should not be used for the purchase of carpets and curtains. All dimensions are + or - 50mm and floor plans are not shown to scale. Electrical, plumbing and kitchen layouts are available from the Sales Information Centre. These particulars do not wholly or in part constitute a contract or agreement and are for general guidance only. Artist's impressions are used for illustration purposes only. Elevations, external treatments, chimney's, brick, roof tile colour and window positions may vary. Please see our Sales Executive for full specification and plot details at this development.



LAMBLEY

3 BEDROOM HOME





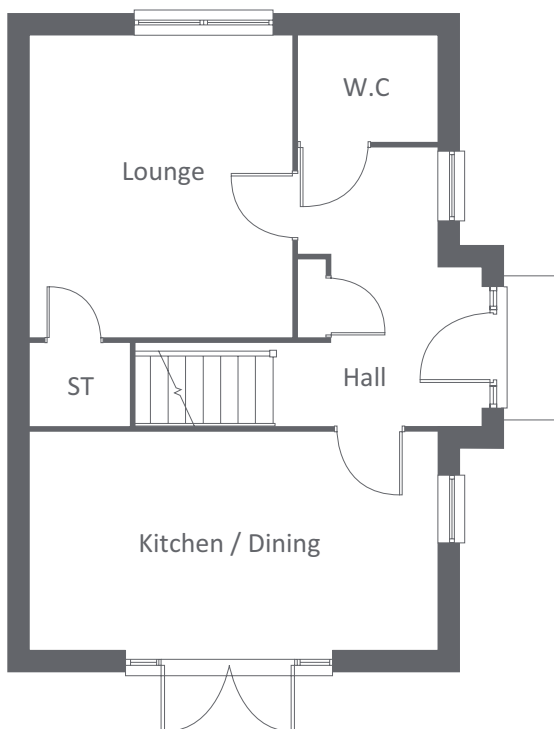
3 BEDROOM HOME

GROUND FLOOR

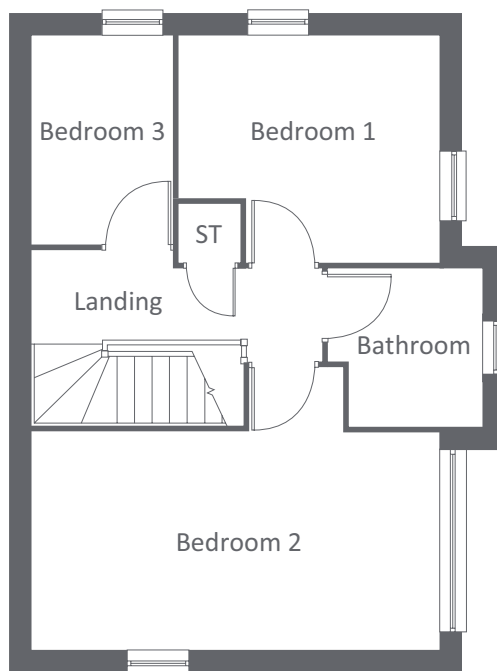
LOUNGE	3912 x 3410	12'10" x 11'2"
KITCHEN/DINING	5303 x 2834	17'4" x 9'3"
W.C	1800 x 1350	5'10" x 4'5"

FIRST FLOOR

BEDROOM 1	3261 x 2935	10'8" x 9'7"
BEDROOM 2	5303 x 2834	17'4" x 9'3"
BEDROOM 3	2747 x 1948	9'0" x 6'4"
BATHROOM	2040 x 1870	6'8" x 6'1"



GROUND FLOOR



FIRST FLOOR

keepmoat.com



These measurements should not be used for the purchase of carpets and curtains. All dimensions are + or - 50mm and floor plans are not shown to scale. Electrical, plumbing and kitchen layouts are available from the Sales Information Centre. These particulars do not wholly or in part constitute a contract or agreement and are for general guidance only. Artist's impressions are used for illustration purposes only. Elevations, external treatments, chimney's, brick, roof tile colour and window positions may vary. Please see our Sales Executive for full specification and plot details at this development.



MILLHOUSE

3 BEDROOM HOME





3 BEDROOM HOME

GROUND FLOOR

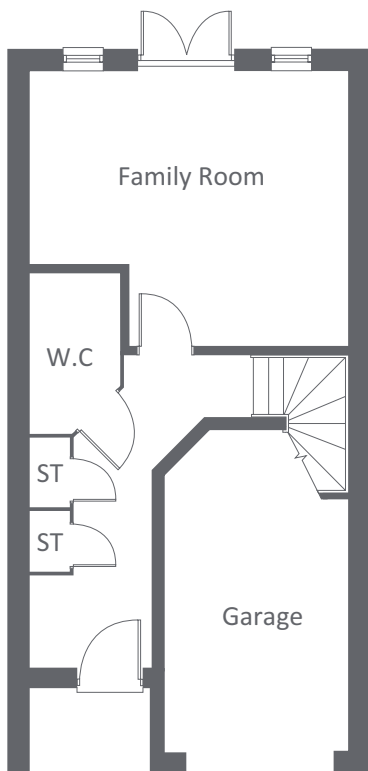
FAMILY	4950 x 4285	16'2" x 14'0"
W.C	2479 x 1400	8'1" x 4'7"

FIRST FLOOR

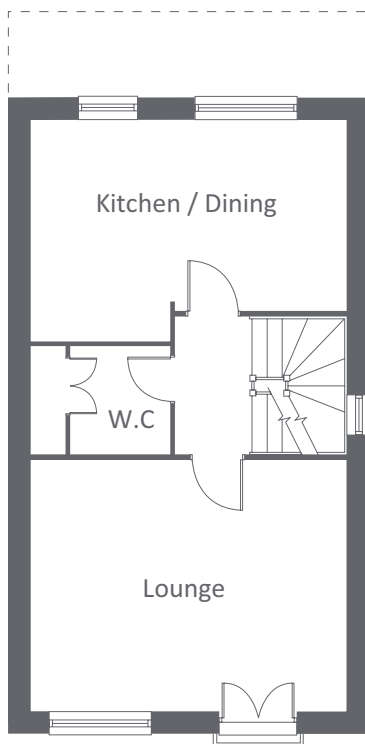
KITCHEN/DINING	4950 x 3460	16'2" x 11'4"
LOUNGE	4950 x 3937	16'2" x 12'11"
W.C	1666 x 1537	5'6" x 5'0"

SECOND FLOOR

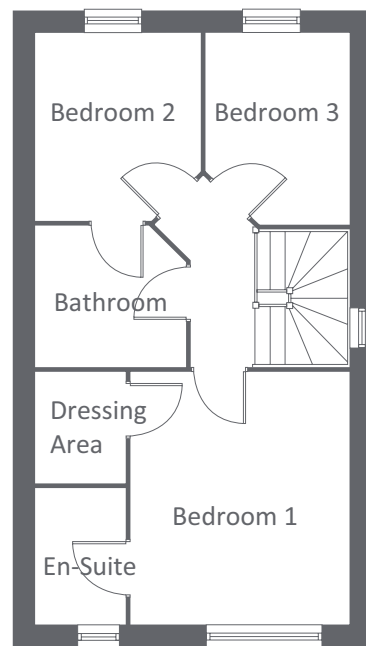
BEDROOM 1	4237 x 3435	13'10" x 11'3"
EN-SUITE	2133 x 1422	6'11" x 4'8"
BEDROOM 2	2941 x 2592	9'7" x 8'6"
BEDROOM 3	3004 x 2265	9'10" x 7'5"
BATHROOM	2362 x 2186	7'9" x 7'2"



GROUND FLOOR



FIRST FLOOR



SECOND FLOOR

keepmoat.com



These measurements should not be used for the purchase of carpets and curtains. All dimensions are + or - 50mm and floor plans are not shown to scale. Electrical, plumbing and kitchen layouts are available from the Sales Information Centre. These particulars do not wholly or in part constitute a contract or agreement and are for general guidance only. Artist's impressions are used for illustration purposes only. Elevations, external treatments, chimney's, brick, roof tile colour and window positions may vary. Please see our Sales Executive for full specification and plot details at this development.



NEWBURN

3 BEDROOM HOME





3 BEDROOM HOME

GROUND FLOOR

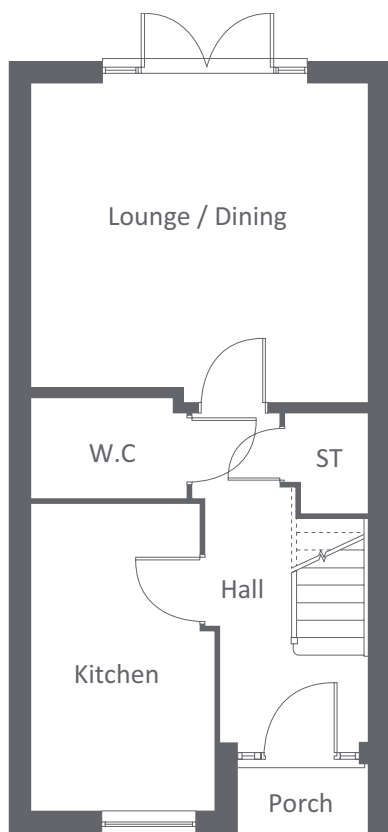
LOUNGE/DINING	4375 x 4089	14'4" x 13'5"
KITCHEN	3985 x 2377	13'0" x 7'9"
W.C	2179 x 1298	7'1" x 4'3"

FIRST FLOOR

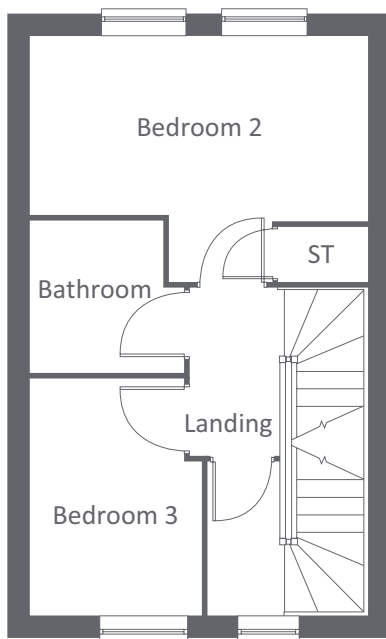
BEDROOM 2	4375 x 2397	14'4" x 7'10"
BEDROOM 3	3072 x 2220	10'0" x 7'3"
BATHROOM	1995 x 1986	6'6" x 6'6"

SECOND FLOOR

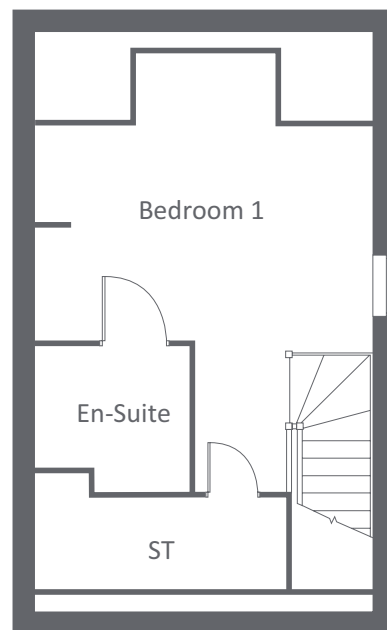
BEDROOM 1	4375 x 4167	14'4" x 13'8"
EN-SUITE	1890 x 1985	6'2" x 6'6"



GROUND FLOOR



FIRST FLOOR



SECOND FLOOR

keepmoat.com



These measurements should not be used for the purchase of carpets and curtains. All dimensions are + or - 50mm and floor plans are not shown to scale. Electrical, plumbing and kitchen layouts are available from the Sales Information Centre. These particulars do not wholly or in part constitute a contract or agreement and are for general guidance only. Artist's impressions are used for illustration purposes only. Elevations, external treatments, chimney's, brick, roof tile colour and window positions may vary. Please see our Sales Executive for full specification and plot details at this development.



3 BEDROOM HOME





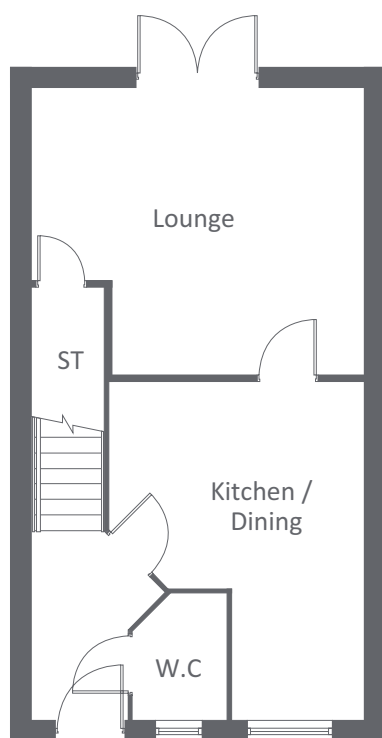
3 BEDROOM HOME

GROUND FLOOR

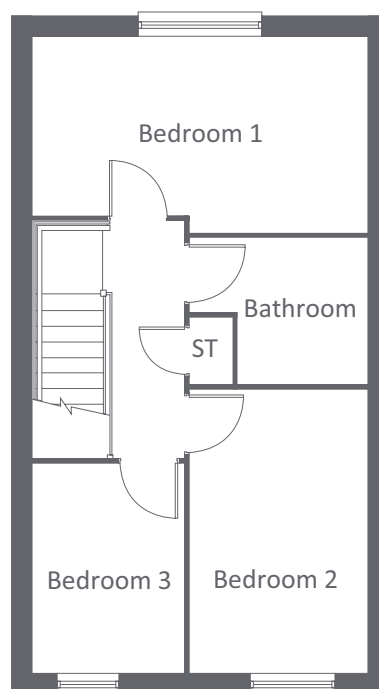
LOUNGE	4847 x 4162	15'11" x 13'8"
KITCHEN / DINING	3708 x 4923	12'2" x 16'2"
W.C	1366 x 1825	4'5" x 6'0"

FIRST FLOOR

BEDROOM 1	4847 x 2828	15'9" x 9'3"
BEDROOM 2	2570 x 4105	8'5" x 13'6"
BEDROOM 3	2184 x 2968	7'2" x 9'9"
BATHROOM	2559 x 2116	8'4" x 6'11"



GROUND FLOOR



FIRST FLOOR

keepmoat.com



These measurements should not be used for the purchase of carpets and curtains. All dimensions are + or - 50mm and floor plans are not shown to scale. Electrical, plumbing and kitchen layouts are available from the Sales Information Centre. These particulars do not wholly or in part constitute a contract or agreement and are for general guidance only. Artist's impressions are used for illustration purposes only. Elevations, external treatments, chimney's, brick, roof tile colour and window positions may vary. Please see our Sales Executive for full specification and plot details at this development.



THE

STYFORD

3 BEDROOM HOME





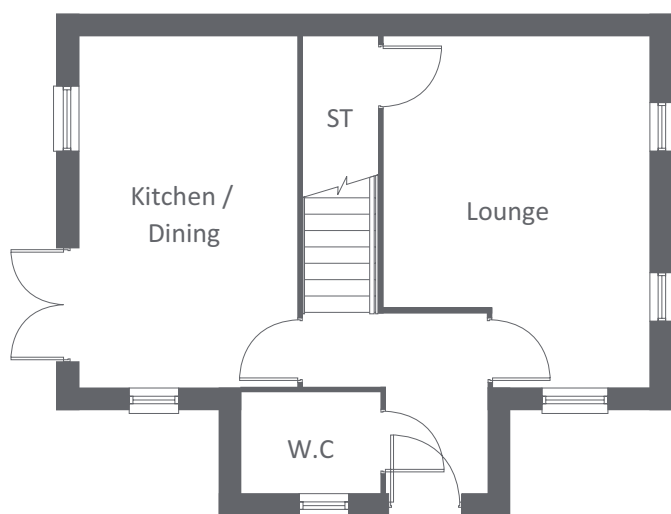
3 BEDROOM HOME

GROUND FLOOR

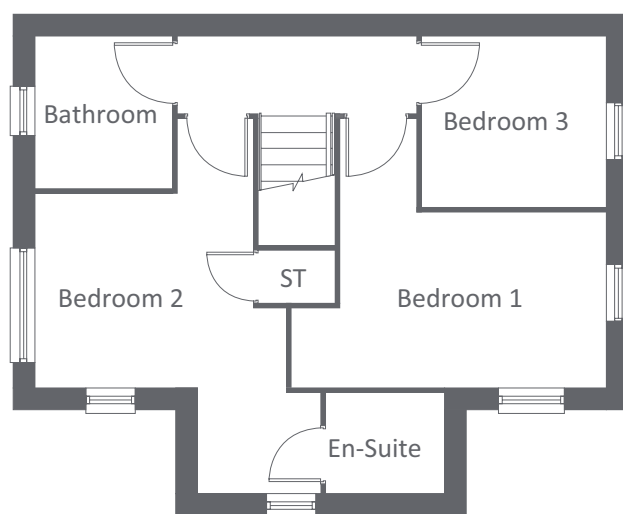
LOUNGE	3667 x 4848	12'0" x 15'9"
KITCHEN / DINING	2998 x 4848	9'10" x 15'9"
W.C	1910 x 1373	6'3" x 4'5"

FIRST FLOOR

BEDROOM 1	4397 x 3695	14'5" x 12'1"
BEDROOM 2	3395 x 2669	11'2" x 8'9"
BEDROOM 3	2529 x 2343	8'4" x 7'8"
EN-SUITE	1660 x 1372	5'5" x 4'6"
BATHROOM	1865 x 2086	6'1" x 6'8"



GROUND FLOOR



FIRST FLOOR

keepmoat.com



These measurements should not be used for the purchase of carpets and curtains. All dimensions are + or - 50mm and floor plans are not shown to scale. Electrical, plumbing and kitchen layouts are available from the Sales Information Centre. These particulars do not wholly or in part constitute a contract or agreement and are for general guidance only. Artist's impressions are used for illustration purposes only. Elevations, external treatments, chimney's, brick, roof tile colour and window positions may vary. Please see our Sales Executive for full specification and plot details at this development.



WARK

3 BEDROOM HOME





3 BEDROOM HOME

GROUND FLOOR

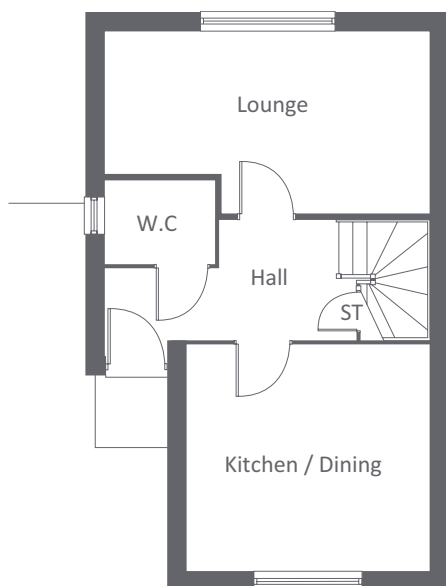
LOUNGE	5415 x 2990	17'9" x 9'9"
KITCHEN/DINING	4065 x 3725	13'4" x 12'2"
W.C	1813 x 1373	5'11" x 4'6"

FIRST FLOOR

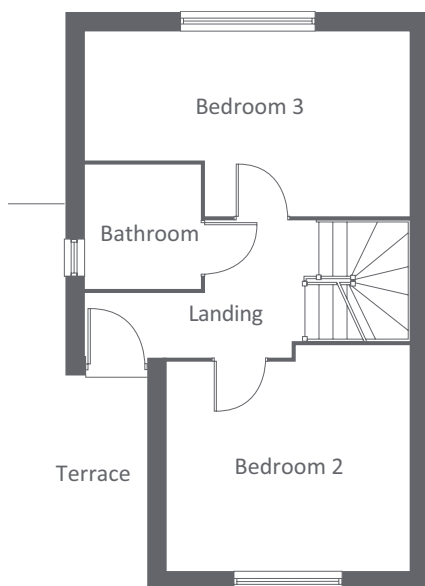
BEDROOM 3	5415 x 2990	17'9" x 9'9"
BEDROOM 2	4065 x 3725	13'4" x 12'2"
BATHROOM	2294 x 1962	7'6" x 6'5"

SECOND FLOOR

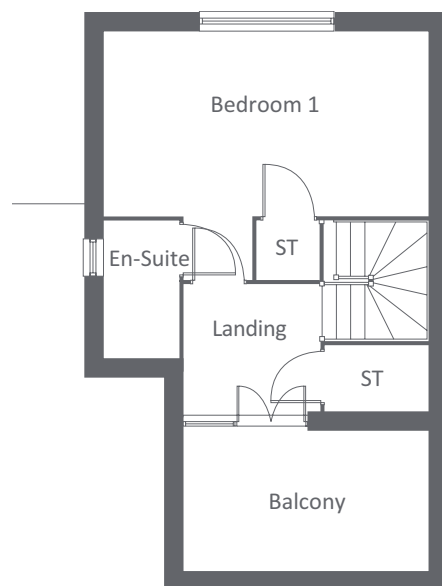
BEDROOM 1	5415 x 3049	17'9" x 10'0"
EN-SUITE	2273 x 1260	7'5" x 4'1"



GROUND FLOOR



FIRST FLOOR



SECOND FLOOR

keepmoat.com



These measurements should not be used for the purchase of carpets and curtains. All dimensions are + or - 50mm and floor plans are not shown to scale. Electrical, plumbing and kitchen layouts are available from the Sales Information Centre. These particulars do not wholly or in part constitute a contract or agreement and are for general guidance only. Artist's impressions are used for illustration purposes only. Elevations, external treatments, chimney's, brick, roof tile colour and window positions may vary. Please see our Sales Executive for full specification and plot details at this development.



CHESTERS

4 BEDROOM HOME





4 BEDROOM HOME

GROUND FLOOR

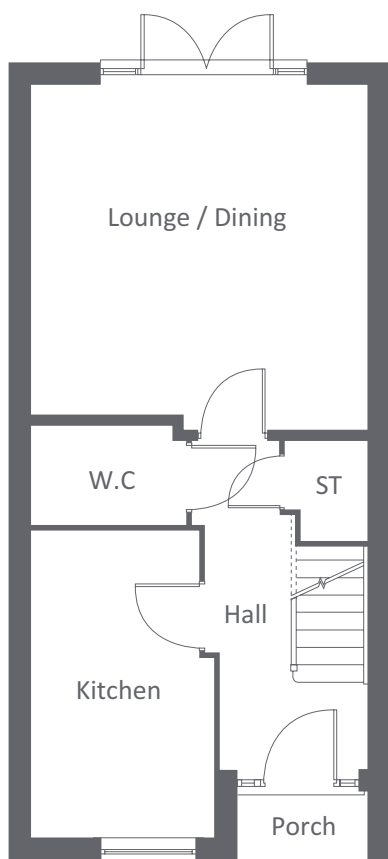
LOUNGE/DINING	4447 x 4375	14'7" x 14'4"
KITCHEN	3985 x 2377	13'0" x 7'9"
W.C	2179 x 1298	7'1" x 4'3"

FIRST FLOOR

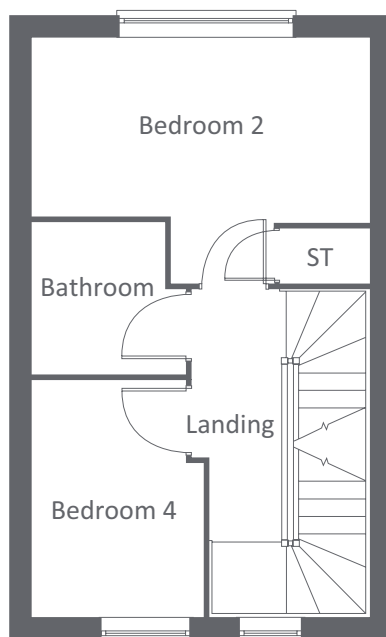
BEDROOM 2	4375 x 2347	14'4" x 7'8"
BEDROOM 4	3072 x 2220	10'0" x 7'3"
BATHROOM	1986 x 1983	6'6" x 6'6"

SECOND FLOOR

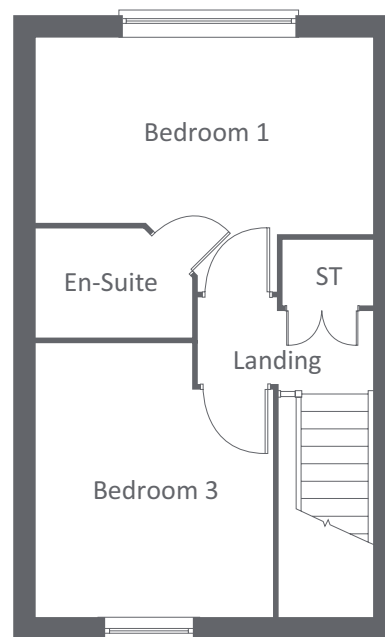
BEDROOM 1	4375 x 2548	14'4" x 8'4"
EN-SUITE	2028 x 1407	6'7" x 4'7"
BEDROOM 3 (INCLUDING WARDROBES)	3551 x 3082	11'7" x 10'1"



GROUND FLOOR



FIRST FLOOR



SECOND FLOOR

keepmoat.com



These measurements should not be used for the purchase of carpets and curtains. All dimensions are + or - 50mm and floor plans are not shown to scale. Electrical, plumbing and kitchen layouts are available from the Sales Information Centre. These particulars do not wholly or in part constitute a contract or agreement and are for general guidance only. Artist's impressions are used for illustration purposes only. Elevations, external treatments, chimney's, brick, roof tile colour and window positions may vary. Please see our Sales Executive for full specification and plot details at this development.



HEXHAM

4 BEDROOM HOME





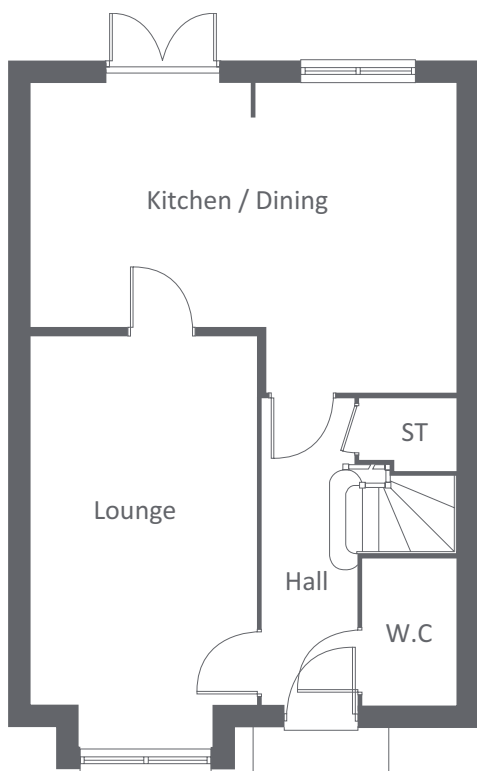
4 BEDROOM HOME

GROUND FLOOR

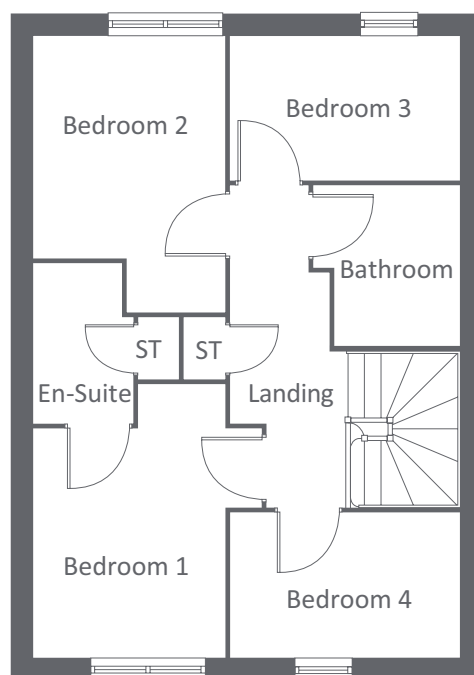
LOUNGE	5638 x 3100	18'5" x 10'2"
KITCHEN/DINING	5865 x 4245	19'2" x 13'11"
W.C	1992 x 1284	6'6" x 4'2"

FIRST FLOOR

BEDROOM 1 (EXCLUDING WARDROBES)	3148 x 2625	10'3" x 8'7"
EN-SUITE	2207 x 1357	7'2" x 4'5"
BEDROOM 2 (EXCLUDING WARDROBES)	3025 x 2627	9'10" x 8'7"
BEDROOM 3	3145 x 1958	10'3" x 6'5"
BEDROOM 4	3147 x 1980	10'3" x 6'5"
BATHROOM	2205 x 1998	7'2" x 6'6"



GROUND FLOOR



FIRST FLOOR

keepmoat.com



These measurements should not be used for the purchase of carpets and curtains. All dimensions are + or - 50mm and floor plans are not shown to scale. Electrical, plumbing and kitchen layouts are available from the Sales Information Centre. These particulars do not wholly or in part constitute a contract or agreement and are for general guidance only. Artist's impressions are used for illustration purposes only. Elevations, external treatments, chimney's, brick, roof tile colour and window positions may vary. Please see our Sales Executive for full specification and plot details at this development.



WYLAM

4 BEDROOM HOME





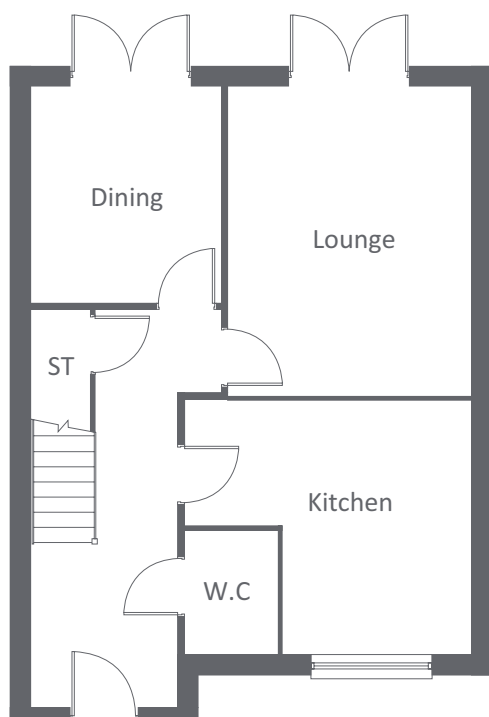
4 BEDROOM HOME

GROUND FLOOR

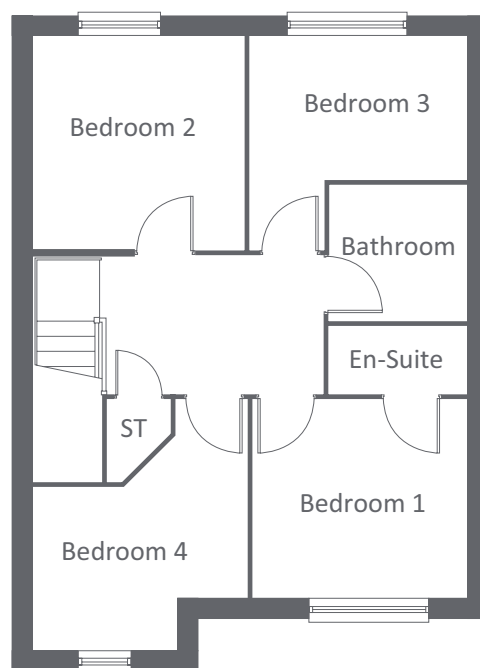
LOUNGE	3585 x 4590	11'9" x 15'1"
DINING	2800 x 3188	9'2" x 10'6"
KITCHEN	4238 x 3765	13'11" x 12'4"
W.C	1355 x 1825	4'5" x 6'0"

FIRST FLOOR

BEDROOM 1	3238 x 2973	10'7" x 9'9"
EN-SUITE	2086 x 1007	6'10" x 3'4"
BEDROOM 2	3146 x 3198	10'4" x 10'6"
BEDROOM 3	3286 x 3210	10'9" x 10'6"
BEDROOM 4	3204 x 3760	10'6" x 12'4"
BATHROOM	2086 x 2036	6'10" x 6'8"



GROUND FLOOR



FIRST FLOOR

keepmoat.com



These measurements should not be used for the purchase of carpets and curtains. All dimensions are + or - 50mm and floor plans are not shown to scale. Electrical, plumbing and kitchen layouts are available from the Sales Information Centre. These particulars do not wholly or in part constitute a contract or agreement and are for general guidance only. Artist's impressions are used for illustration purposes only. Elevations, external treatments, chimney's, brick, roof tile colour and window positions may vary. Please see our Sales Executive for full specification and plot details at this development.



NEWCASTLE UPON TYNE

All enquiries: 0191 543 7931

or email: therise@keepmoat.com

keepmoat.com

A DEVELOPMENT BY

