



The Pavilions

Kenilworth



Our name has been synonymous with building since 1885, when Charles William Bovis bought a construction company in the London Borough of Marylebone and changed its name to CW Bovis & Co.

From those foundations has grown a Bovis heritage to be proud of, including quality homes and communities across Britain.

Welcome to The Pavilions

Our stunning development of brand new one to five bedroom family homes is enviably located next to Kenilworth Cricket Club on the sought after Warwick Road.

The Pavilions also enjoys beautiful countryside views whilst also being less than a mile to the centre of the modern market town of Kenilworth, one of the most desirable places to live in Warwickshire.





Artists impression has been produced for illustrative purposes only. Please check the details of the homes you are interested in with the sales advisor.



A taste of local life

Kenilworth is a beautiful Warwickshire town surrounded by stunning countryside. Within the town is a real sense of local community, while the town sits at the foot of some of the most spectacular medieval castle ruins in England.

Location

Kenilworth is less than five miles from Coventry and just six miles from both Warwick and Leamington Spa. With junction 15 of the M40 just six miles away, and Junction 2 of the M6 just under 12 miles away; getting around for work or pleasure is a breeze.

Kenilworth railway station offers services to Coventry and Leamington Spa with journey times of around 10 minutes each. From these stations, connections to London and Birmingham can be taken with ease. For international destinations, Birmingham Airport is 15 miles away.

Entertainment and leisure

There are plenty of options for a family day out around Kenilworth. Why not take a step back in time at Kenilworth Castle to explore the Elizabethan Garden? For a relaxed afternoon, visit Abbey Fields where you'll find a large open park featuring swimming pools, tennis courts, a children's playground and a lake. Just a few miles away you can explore Hatton Adventure World and enjoy a day to remember. The town also has two theatres, The Talisman and The Priory ideal for an evening out.

When it comes to dining, locals are spoilt for choice. From the Michelin starred gastropub, The Cross, to a wide variety of bars and restaurants serving international cuisine. Not forgetting the many tea shops, coffee shops and patisseries catering for weary shoppers! Kenilworth is also well provided for when it comes to sport. The Pavilions is located next to Kenilworth Cricket Club, and just a couple of miles from both Warwickshire Golf and Country Club and Kenilworth Golf Club. For racquet sports, Kenilworth Tennis, Squash & Croquet Club has excellent sport and social facilities.

Education

There are several primary schools in Kenilworth with the nearest school to the development being St Johns Primary School. While for secondary and sixth form education, Kenilworth School and Sixth Form is located in the town centre. There are also several other local state and independent schools for children of all ages in Kenilworth and the surrounding area.

Development layout

The Pavilions boasts a stunning range of one to five bedroom homes each with unique views and aspects. Discover your dream home in Kenilworth today.



The Walton
1 bedroom bungalow



The Rowan
2 bedroom home



The Holly
2 bedroom home



The Beech
3 bedroom home



The Spruce
3 bedroom home



The Chestnut
3 bedroom home



The Cypress
3 bedroom home



The Willow
3 bedroom home



The Cedar
3 bedroom home



The Aspen
4 bedroom home



The Birch
5 bedroom home



The Lime
5 bedroom home



The Oak
5 bedroom home



The Pine
5 bedroom home

- Affordable housing
- visitor parking
- pumping station
- fibre cabinet
- bin collection point
- local equipped area of play

Please note: The trees shown are indicative, the planting may change.



The Pine

5 bedroom home

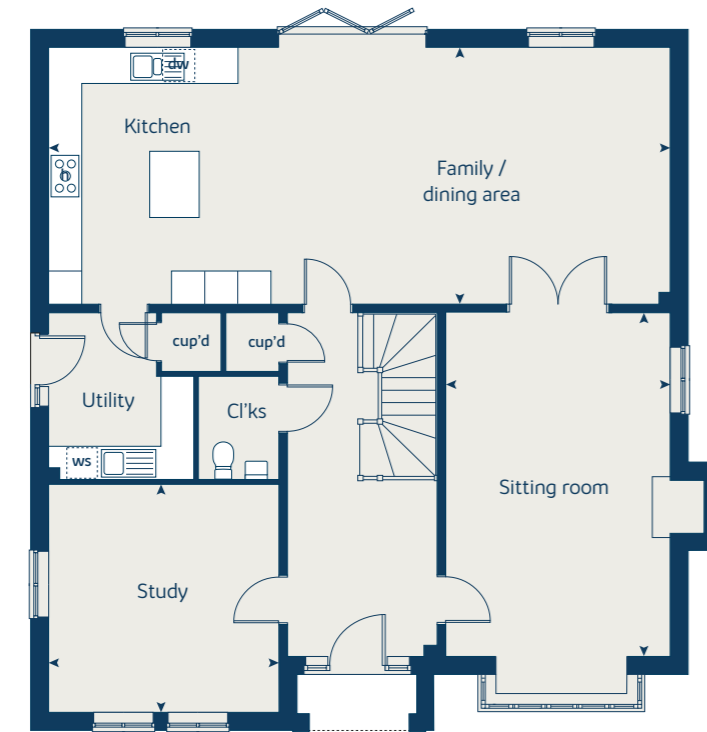
Ground floor	metres	feet / inches
Kitchen / family / dining area	11.26 x 4.66	36' 11" x 15' 3"
Sitting room	6.23 x 4.07	20' 4" x 13' 3"
Study	4.18 x 4.13	13' 8" x 13' 6"

First floor	metres	feet / inches
Bedroom 1	4.91 x 4.18	16' 1" x 13' 8"
Bedroom 2	4.14 x 3.80	13' 6" x 12' 5"
Bedroom 3	4.13 x 3.59	13' 6" x 11' 9"
Bedroom 4	4.18 x 3.81	13' 8" x 12' 6"
Bedroom 5	3.55 x 2.71	11' 6" x 8' 10"

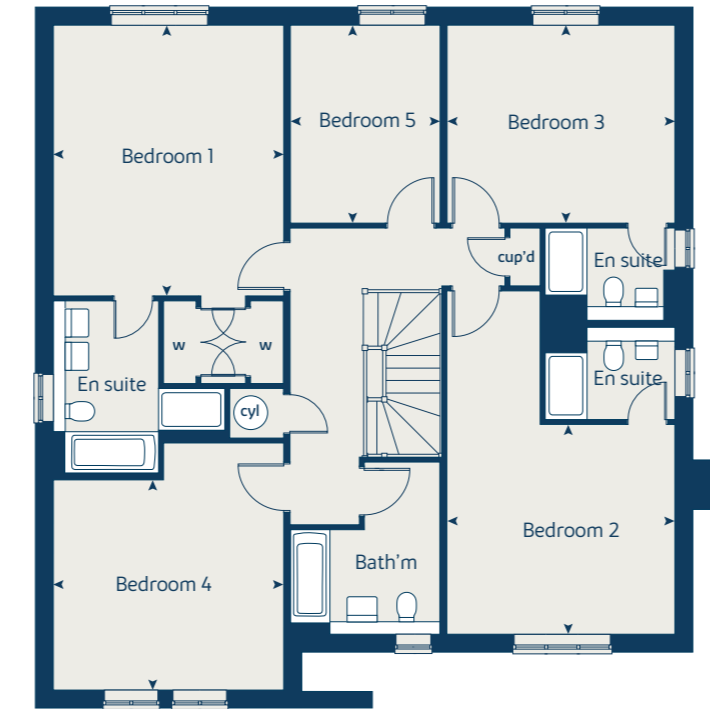
The Pine | X523 P7 C0003 |
 This floorplan has been produced for illustrative purposes only. Room sizes shown are between arrow points as indicated on plan. The dimensions have tolerances of + or -50mm and should not be used other than for general guidance. If specific dimensions are required, enquiries should be made to the sales advisor.

h	hob	w	wardrobe
dw	dishwasher	cup'd	cupboard
ws	washing machine space	◀ ▶	measuring points
cyl	hot water cylinder		

Ground floor



First floor



Please refer to the sales advisor for specific plot details as the illustrations shown are computer generated impressions of how the property may look so are indicative only. External details or finishes may vary on individual plots and homes may be built in either detached or attached styles depending on the development layout. Exact specifications, window styles and whether a property is left or right handed may differ from plot to plot. The floorplans shown are not to scale. Measurements are based on the original drawings. Slight variations may occur during construction.



The Oak

5 bedroom home

Ground floor	metres	feet / inches
Kitchen / family / dining area	8.28 x 5.10	27' 2" x 16' 8"
Sitting room	5.71 x 4.06	18' 8" x 13' 3"
Dining room	4.06 x 3.06	13' 3" x 10' 0"
Study	4.50 x 2.44	14' 9" x 8' 0"

First floor	metres	feet / inches
Bedroom 1	4.66 x 4.09	15' 3" x 13' 5"
Bedroom 2	4.37 x 2.95	14' 4" x 9' 8"
Bedroom 3	4.13 x 3.16	13' 6" x 10' 4"
Bedroom 4	2.54 x 3.23	10' 7" x 8' 4"
Bedroom 5	3.20 x 2.51	10' 5" x 8' 2"

The Oak | X531 (F) P6 vt C0003 |
 This floorplan has been produced for illustrative purposes only. Room sizes shown are between arrow points as indicated on plan. The dimensions have tolerances of + or -50mm and should not be used other than for general guidance. If specific dimensions are required, enquiries should be made to the sales advisor.

h	hob	w	wardrobe
dw	dishwasher	cup'd	cupboard
ws	washing machine space	◀ ▶	measuring points
cyl	hot water cylinder		

Ground floor



First floor



Please refer to the sales advisor for specific plot details as the illustrations shown are computer generated impressions of how the property may look so are indicative only. External details or finishes may vary on individual plots and homes may be built in either detached or attached styles depending on the development layout. Exact specifications, window styles and whether a property is left or right handed may differ from plot to plot. The floorplans shown are not to scale. Measurements are based on the original drawings. Slight variations may occur during construction.



The Lime

5 bedroom home

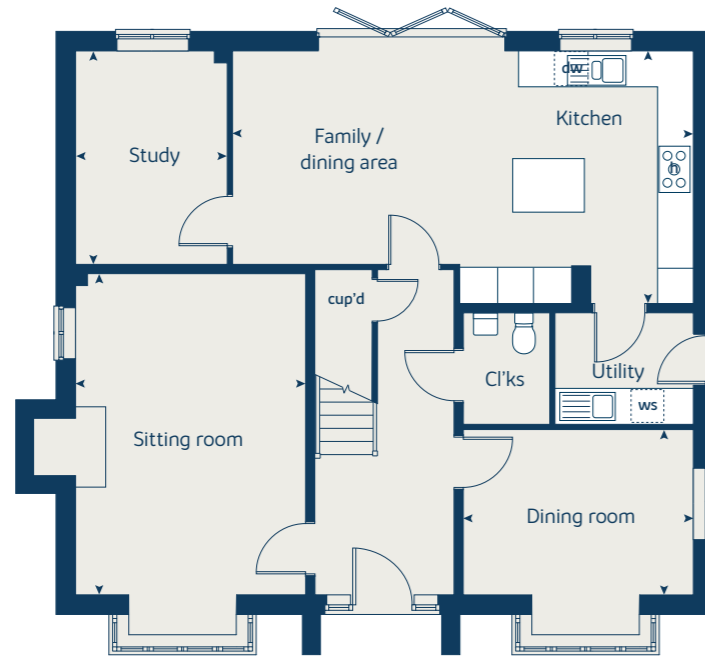
Ground floor	metres	feet / inches
Kitchen / family / dining area	7.69 x 4.23	25' 2" x 13' 10"
Sitting room	5.39 x 3.86	17' 8" x 12' 7"
Dining room	3.86 x 2.78	12' 7" x 9' 1"
Study	3.58 x 2.55	11' 8" x 8' 4"

First floor	metres	feet / inches
Bedroom 1	4.05 x 3.76	13' 3" x 12' 3"
Bedroom 2	4.05 x 3.52	13' 3" x 11' 6"
Bedroom 3	3.26 x 3.24	10' 7" x 10' 6"
Bedroom 4	3.55 x 2.26	11' 7" x 7' 4"
Bedroom 5	2.83 x 2.64	9' 3" x 8' 7"

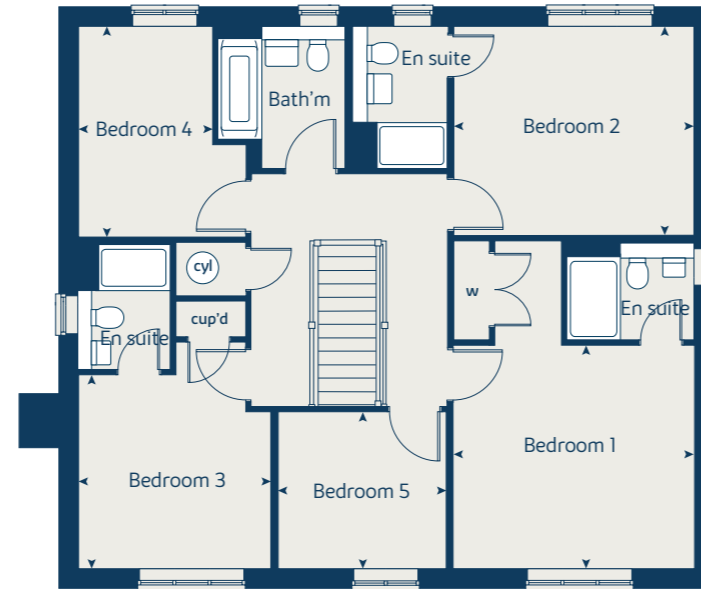
The Lime | X520 (IF) P6 |
 This floorplan has been produced for illustrative purposes only. Room sizes shown are between arrow points as indicated on plan. The dimensions have tolerances of + or -50mm and should not be used other than for general guidance. If specific dimensions are required, enquiries should be made to the sales advisor.

h	hob	w	wardrobe
dw	dishwasher	cup'd	cupboard
ws	washing machine space	< >	measuring points
cyl	hot water cylinder		

Ground floor



First floor



Please refer to the sales advisor for specific plot details as the illustrations shown are computer generated impressions of how the property may look so are indicative only. External details or finishes may vary on individual plots and homes may be built in either detached or attached styles depending on the development layout. Exact specifications, window styles and whether a property is left or right handed may differ from plot to plot. The floorplans shown are not to scale. Measurements are based on the original drawings. Slight variations may occur during construction.



The Birch

5 bedroom home

Ground floor	metres	feet / inches
Kitchen / family / dining area	9.13 x 4.54	29' 11" x 14' 10"
Sitting room	4.17 x 3.61	13' 8" x 11' 10"
Study / dining room	3.41 x 3.00	11' 2" x 9' 10"

First floor	metres	feet / inches
Bedroom 1	3.62 x 3.51	11' 10" x 11' 6"
Bedroom 2	3.92 x 2.90	12' 9" x 9' 6"
Bedroom 3	3.06 x 2.82	10' 0" x 9' 3"
Bedroom 4	2.98 x 2.83	9' 9" x 9' 3"
Bedroom 5	3.00 x 2.83	9' 10" x 9' 3"

The Birch | X518 (IF) P5 C0003 |
 This floorplan has been produced for illustrative purposes only. Room sizes shown are between arrow points as indicated on plan. The dimensions have tolerances of + or -50mm and should not be used other than for general guidance. If specific dimensions are required, enquiries should be made to the sales advisor.

h	hob	cyl	hot water cylinder
dw	dishwasher	w	wardrobe
ws	washing machine space	cup'd	cupboard
ldr	larder	◀ ▶	measuring points

Ground floor



First floor



Please refer to the sales advisor for specific plot details as the illustrations shown are computer generated impressions of how the property may look so are indicative only. External details or finishes may vary on individual plots and homes may be built in either detached or attached styles depending on the development layout. Exact specifications, window styles and whether a property is left or right handed may differ from plot to plot. The floorplans shown are not to scale. Measurements are based on the original drawings. Slight variations may occur during construction.



The Aspen

4 bedroom home

Ground floor	metres	feet / inches
Kitchen / dining area	7.77 x 3.37	25' 6" x 11' 0"
Sitting room	5.04 x 3.39	16' 6" x 11' 1"
Study	2.01 x 2.01	6' 7" x 6' 7"

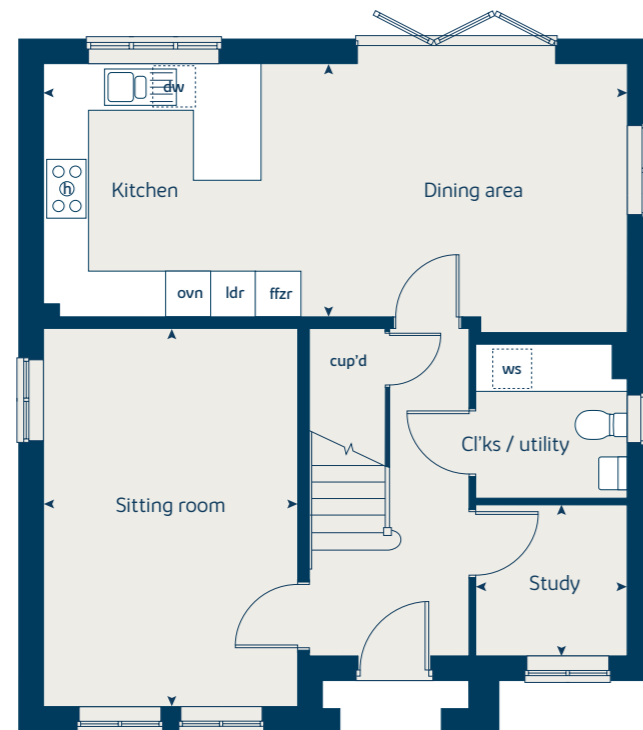
First floor	metres	feet / inches
Bedroom 1	4.52 x 3.45	14' 9" x 11' 4"
Bedroom 2	3.63 x 3.20	11' 11" x 10' 6"
Bedroom 3	4.07 x 2.45	13' 4" x 8' 0"
Bedroom 4	3.61 x 2.45	11' 10" x 8' 0"

The Aspen | X414 (F) P6 C0003 |

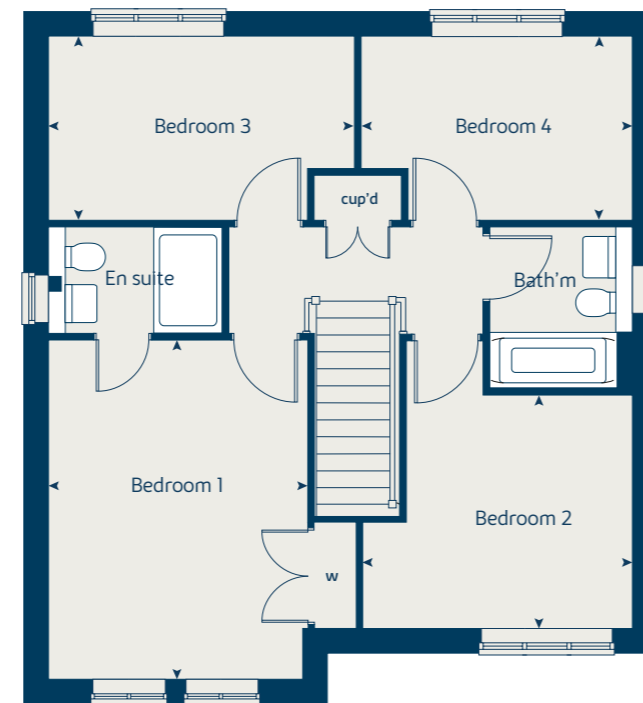
This floorplan has been produced for illustrative purposes only. Room sizes shown are between arrow points as indicated on plan. The dimensions have tolerances of + or -50mm and should not be used other than for general guidance. If specific dimensions are required, enquiries should be made to the sales advisor.

ovn	oven	ldr	larder
h	hob	w	wardrobe
dw	dishwasher	cup'd	cupboard
ws	washing machine space	◀ ▶	measuring points
ffzr	fridge freezer		

Ground floor



First floor



Please refer to the sales advisor for specific plot details as the illustrations shown are computer generated impressions of how the property may look so are indicative only. External details or finishes may vary on individual plots and homes may be built in either detached or attached styles depending on the development layout. Exact specifications, window styles and whether a property is left or right handed may differ from plot to plot. The floorplans shown are not to scale. Measurements are based on the original drawings. Slight variations may occur during construction.



The Willow

3 bedroom home

Ground floor	metres	feet / inches
Kitchen / dining room	5.97 x 4.06	19' 7" x 13' 4"
Sitting room	4.11 x 3.22	13' 6" x 10' 7"

First floor	metres	feet / inches
Bedroom 2	6.03 x 4.93	19' 9" x 16' 2"
Bedroom 3	3.36 x 3.32	11' 0" x 10' 11"
Study area	4.13 x 2.56	13' 7" x 8' 5"

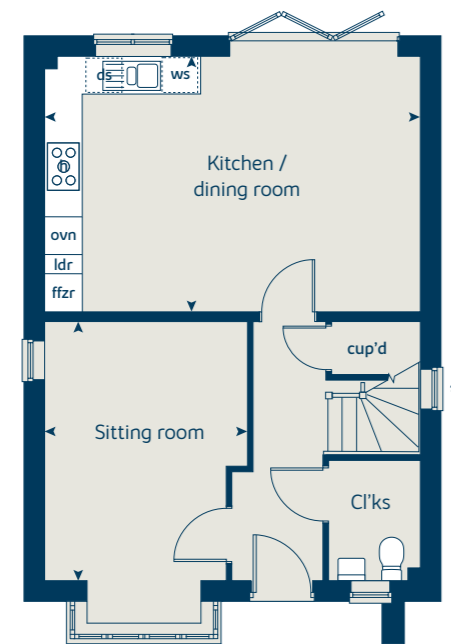
Second floor	metres	feet / inches
Bedroom 1	4.34 x 4.04	14' 2" x 13' 3"

The Willow | X411 vt P4 C0003 |

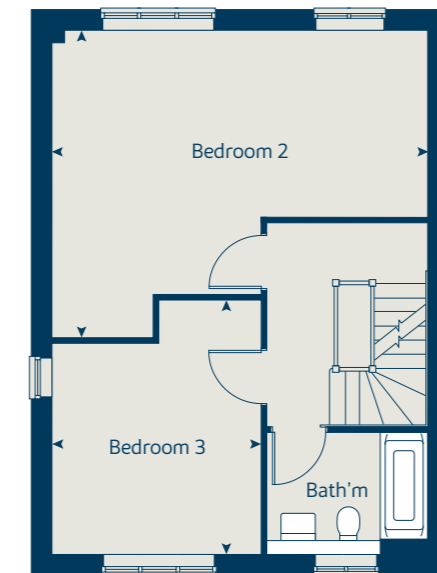
This floorplan has been produced for illustrative purposes only. Room sizes shown are between arrow points as indicated on plan. The dimensions have tolerances of + or -50mm and should not be used other than for general guidance. If specific dimensions are required, enquiries should be made to the sales consultant.

ovn	oven	ffzr	fridge freezer
h	hob	w	wardrobe
dw	dishwasher	cup'd	cupboard
ws	washing machine space	◀ ▶	measuring points
ldr	larder		

Ground floor



First floor



Second floor



* Windows apply to selected plots only. Please see sales consultant for further details.

Please refer to the sales advisor for specific plot details as the illustrations shown are computer generated impressions of how the property may look so are indicative only. External details or finishes may vary on individual plots and homes may be built in either detached or attached styles depending on the development layout. Exact specifications, window styles and whether a property is left or right handed may differ from plot to plot. The floorplans shown are not to scale. Measurements are based on the original drawings. Slight variations may occur during construction.



The Chestnut

3 bedroom home

Ground floor	metres	feet / inches
Kitchen	4.03 x 3.04	13' 2" x 9' 11"
Dining / family area	4.59 x 2.85	15' 0" x 9' 4"
Sitting room	4.98 x 3.40	16' 4" x 11' 1"
Snug	3.40 x 1.81	11' 1" x 5' 11"

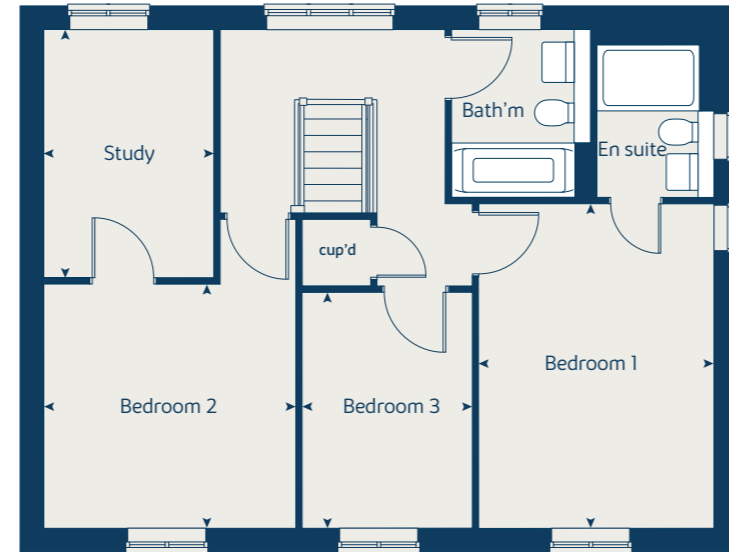
First floor	metres	feet / inches
Bedroom 1	4.47 x 3.24	14' 8" x 10' 8"
Bedroom 2	3.48 x 3.36	11' 5" x 11' 0"
Bedroom 3	3.25 x 2.35	10' 7" x 7' 8"
Study	3.42 x 2.34	11' 3" x 7' 8"

The Chestnut | X413 vt P5 C0003 |

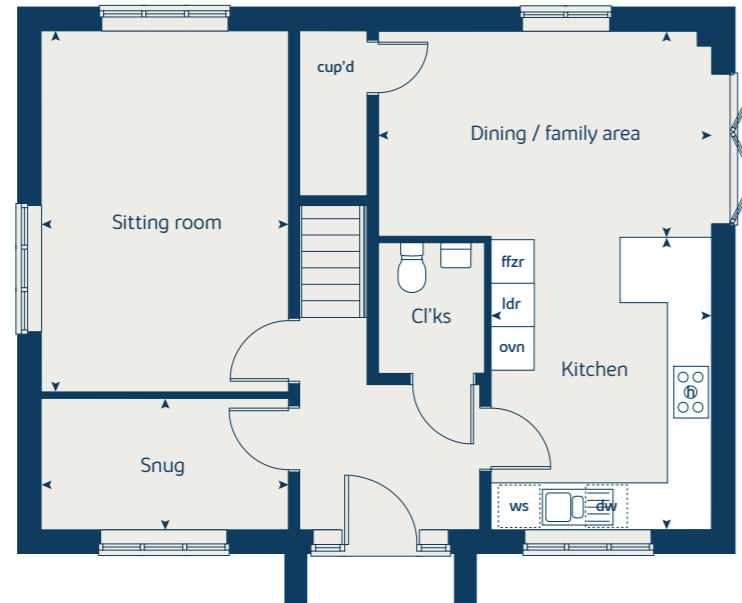
This floorplan has been produced for illustrative purposes only. Room sizes shown are between arrow points as indicated on plan. The dimensions have tolerances of + or -50mm and should not be used other than for general guidance. If specific dimensions are required, enquiries should be made to the sales advisor.

ovn	oven	ffzr	fridge freezer
h	hob	w	wardrobe
dw	dishwasher	cup'd	cupboard
ws	washing machine space	◀ ▶	measuring points
ldr	larder		

First floor



Ground floor



Please refer to the sales advisor for specific plot details as the illustrations shown are computer generated impressions of how the property may look so are indicative only. External details or finishes may vary on individual plots and homes may be built in either detached or attached styles depending on the development layout. Exact specifications, window styles and whether a property is left or right handed may differ from plot to plot. The floorplans shown are not to scale. Measurements are based on the original drawings. Slight variations may occur during construction.



The Cedar

3 bedroom home

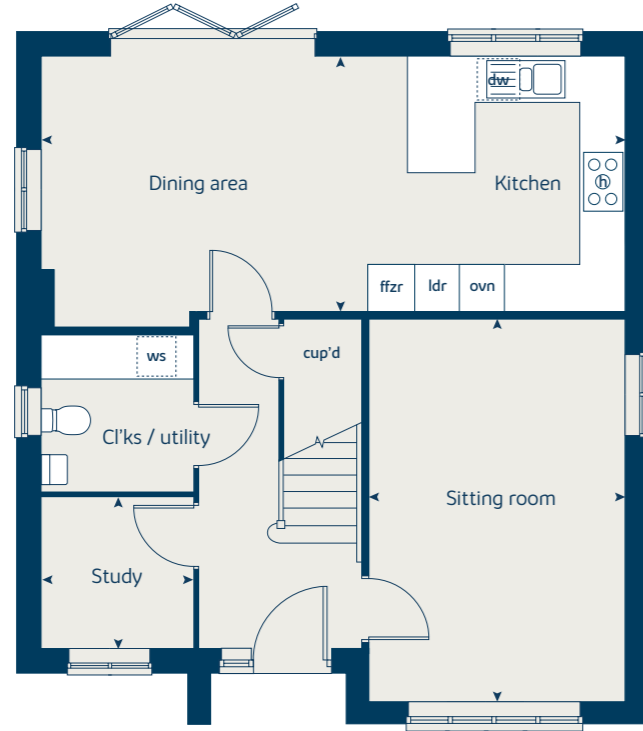
Ground floor	metres	feet / inches
Kitchen / dining area	7.83 x 3.43	25' 8" x 11' 2"
Sitting room	5.04 x 3.39	16' 6" x 11' 1"
Study	2.05 x 2.06	6' 8" x 6' 9"

First floor	metres	feet / inches
Bedroom 1	4.13 x 3.93	13' 6" x 12' 10"
Bedroom 2	3.55 x 3.14	11' 8" x 10' 3"
Bedroom 3	6.14 x 3.05	20' 1" x 10' 0"

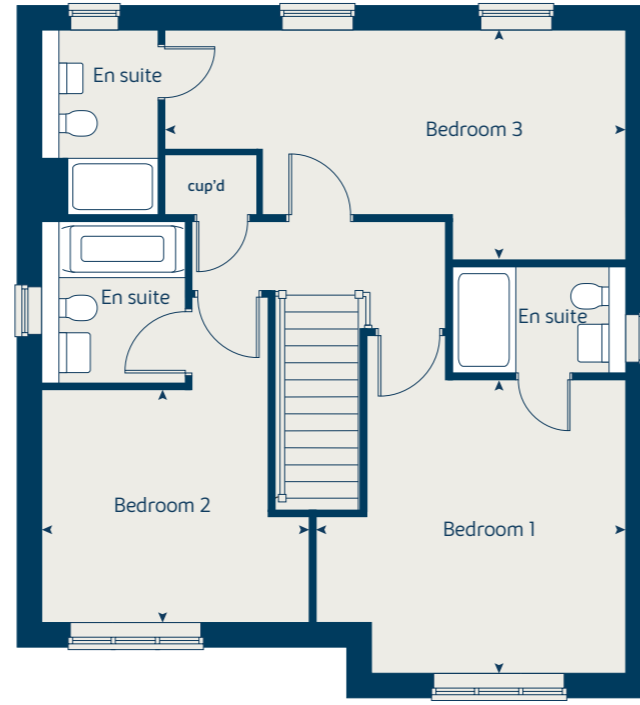
The Cedar | X3414 C0003 |
 This floorplan has been produced for illustrative purposes only. Room sizes shown are between arrow points as indicated on plan. The dimensions have tolerances of + or -50mm and should not be used other than for general guidance. If specific dimensions are required, enquiries should be made to the sales advisor.

ovn	oven	ldr	larder
h	hob	w	wardrobe
dw	dishwasher	cup'd	cupboard
ws	washing machine space	◀ ▶	measuring points
ffzr	fridge freezer		

Ground floor



First floor



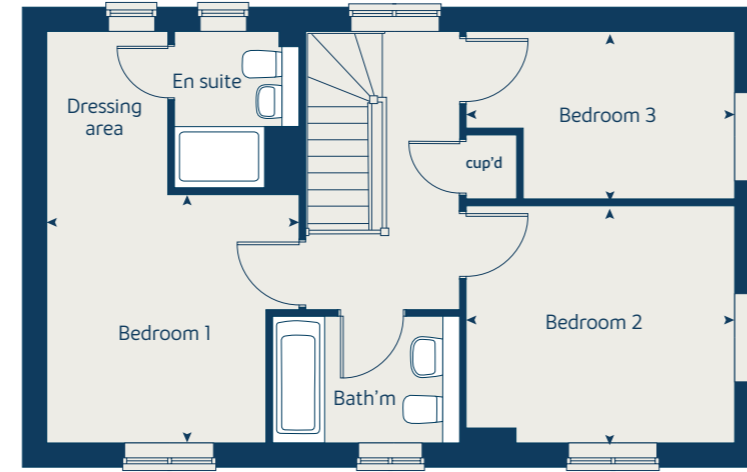
Please refer to the sales advisor for specific plot details as the illustrations shown are computer generated impressions of how the property may look so are indicative only. External details or finishes may vary on individual plots and homes may be built in either detached or attached styles depending on the development layout. Exact specifications, window styles and whether a property is left or right handed may differ from plot to plot. The floorplans shown are not to scale. Measurements are based on the original drawings. Slight variations may occur during construction.



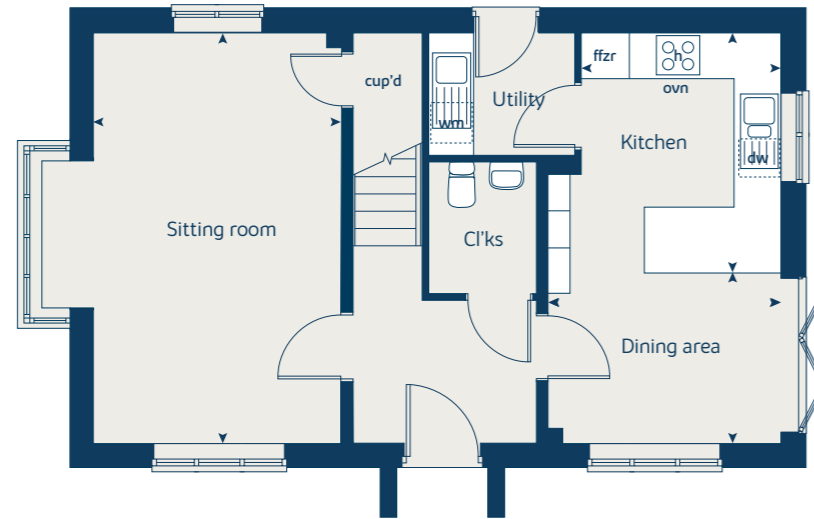
The Spruce

3 bedroom home

First floor



Ground floor



Ground floor	metres	feet / inches
Kitchen	3.23 x 2.69	10' 7" x 8' 9"
Dining area	3.14 x 2.30	10' 3" x 7' 6"
Sitting room	5.53 x 3.32	18' 1" x 10' 10"

First floor	metres	feet / inches
Bedroom 1	3.39 x 3.33	11' 1" x 10' 11"
Bedroom 2	3.61 x 3.18	11' 10" x 10' 5"
Bedroom 3	3.61 x 2.25	11' 10" x 7' 4"

The Spruce | X307 (IF) P6 C0003 |
 This floorplan has been produced for illustrative purposes only. Room sizes shown are between arrow points as indicated on plan. The dimensions have tolerances of + or -50mm and should not be used other than for general guidance. If specific dimensions are required, enquiries should be made to the sales advisor.

ovn	oven	ffzr	fridge freezer
h	hob	cup'd	cupboard
dw	dishwasher	◀ ▶	measuring points
ws	washing machine space		

Please refer to the sales advisor for specific plot details as the illustrations shown are computer generated impressions of how the property may look so are indicative only. External details or finishes may vary on individual plots and homes may be built in either detached or attached styles depending on the development layout. Exact specifications, window styles and whether a property is left or right handed may differ from plot to plot. The floorplans shown are not to scale. Measurements are based on the original drawings. Slight variations may occur during construction.



The Beech

3 bedroom home

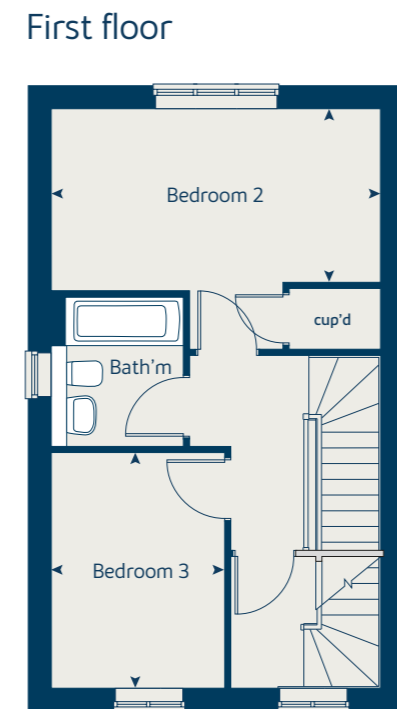
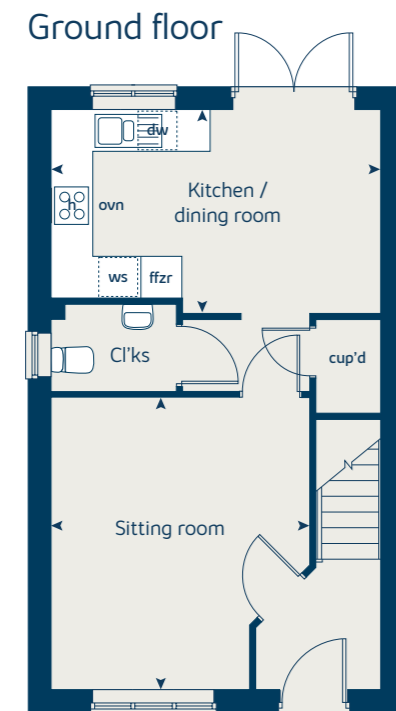
Ground floor	metres	feet / inches
Kitchen / dining room	4.74 x 2.93	15' 6" x 9' 7"
Sitting room	4.19 x 3.72	13' 9" x 12' 2"

First floor	metres	feet / inches
Bedroom 2	4.74 x 2.50	15' 6" x 8' 2"
Bedroom 3	3.39 x 2.49	11' 1" x 8' 2"

Second floor	metres	feet / inches
Bedroom 1	4.74 x 4.06	15' 6" x 13' 3"

The Beech | X309 P5 |
 This floorplan has been produced for illustrative purposes only. Room sizes shown are between arrow points as indicated on plan. The dimensions have tolerances of + or -50mm and should not be used other than for general guidance. If specific dimensions are required, enquiries should be made to the sales advisor.

ovn	oven	ffzr	fridge freezer
h	hob	cup'd	cupboard
dw	dishwasher	◀ ▶	measuring points
ws	washing machine space		



Please refer to the sales advisor for specific plot details as the illustrations shown are computer generated impressions of how the property may look so are indicative only. External details or finishes may vary on individual plots and homes may be built in either detached or attached styles depending on the development layout. Exact specifications, window styles and whether a property is left or right handed may differ from plot to plot. The floorplans shown are not to scale. Measurements are based on the original drawings. Slight variations may occur during construction.

The Cypress

3 bedroom home

Ground floor	metres	feet / inches
Kitchen / dining area	5.52 x 3.12	18' 1" x 10' 2"
Sitting room	4.33 x 3.40	14' 2" x 11' 1"

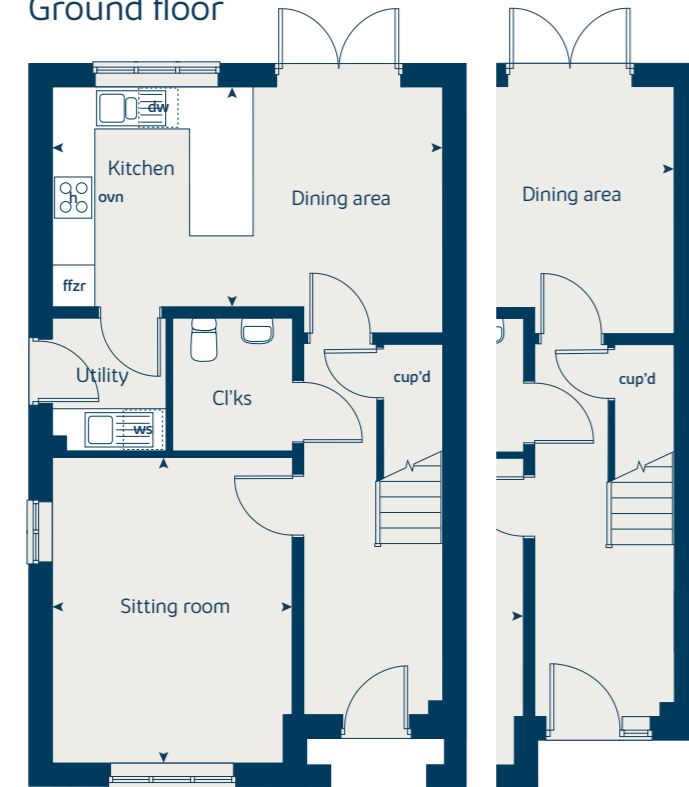
First floor	metres	feet / inches
Bedroom 1	4.09 x 3.28	13' 5" x 10' 9"
Bedroom 2	3.28 x 2.77	10' 9" x 9' 1"
Bedroom 3	3.54 x 2.16	11' 7" x 7' 1"

The Cypress | X308 (IF) P7 C0003 |

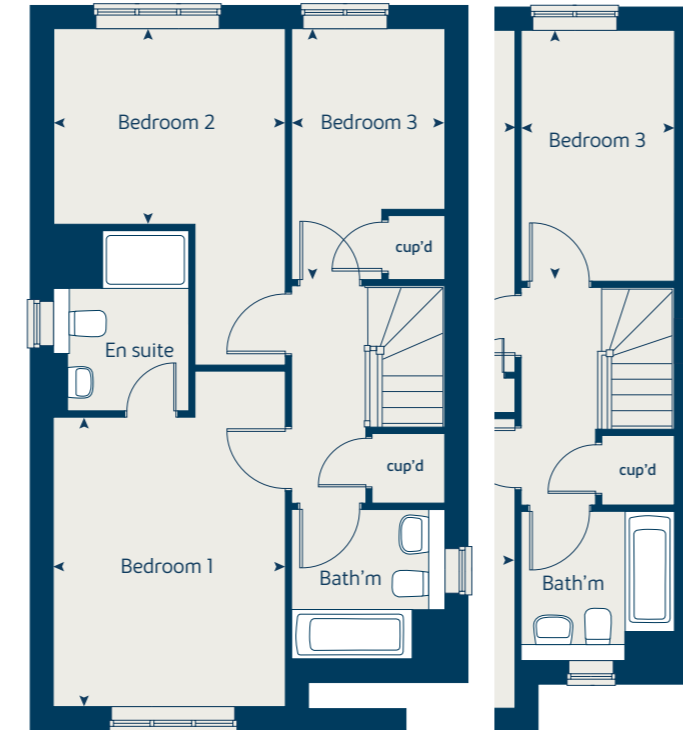
This floorplan has been produced for illustrative purposes only. Room sizes shown are between arrow points as indicated on plan. The dimensions have tolerances of + or -50mm and should not be used other than for general guidance. If specific dimensions are required, enquiries should be made to the sales advisor.

ovn	oven	ffzr	fridge freezer
h	hob	cup'd	cupboard
dw	dishwasher	◀ ▶	measuring points
ws	washing machine space		

Ground floor



First floor



① Alternative layout applies to selected plots only. Please see sales advisor for further details.

Please refer to the sales advisor for specific plot details as the illustrations shown are computer generated impressions of how the property may look so are indicative only. External details or finishes may vary on individual plots and homes may be built in either detached or attached styles depending on the development layout. Exact specifications, window styles and whether a property is left or right handed may differ from plot to plot. The floorplans shown are not to scale. Measurements are based on the original drawings. Slight variations may occur during construction.



The Rowan

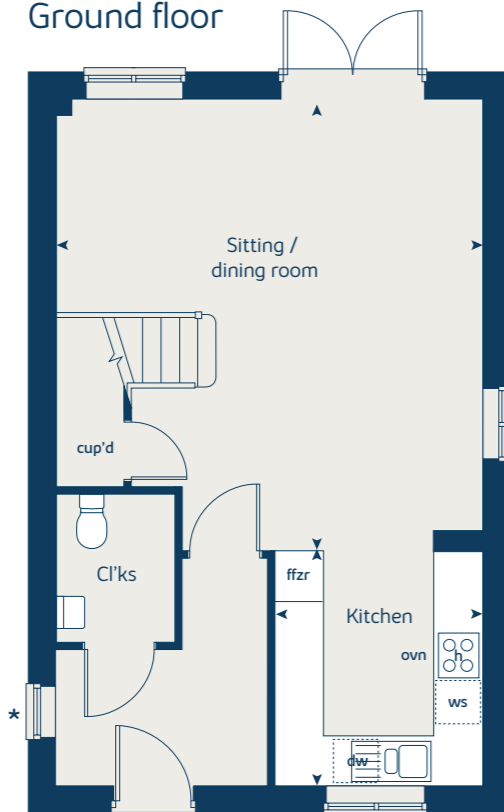
2 bedroom home

Ground floor	metres	feet / inches
Kitchen	2.85 x 2.46	9' 4" x 8' 1"
Sitting / dining room	5.49 x 5.19	18' 0" x 17' 0"
First floor		
Bedroom 1	3.68 x 3.57	12' 1" x 11' 8"
Bedroom 2	2.97 x 2.44	9' 8" x 8' 0"
Study area	3.58 x 2.13	11' 9" x 7' 0"

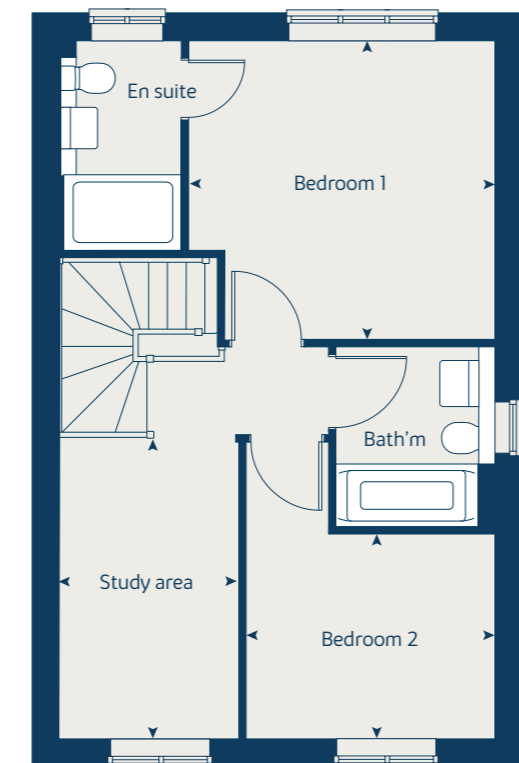
The Rowan | X306 vt P4 C0003 |
 This floorplan has been produced for illustrative purposes only. Room sizes shown are between arrow points as indicated on plan. The dimensions have tolerances of + or -50mm and should not be used other than for general guidance. If specific dimensions are required, enquiries should be made to the sales advisor.

ovn	oven	ffzr	fridge freezer
h	hob	cup'd	cupboard
dw	dishwasher	◀ ▶	measuring points
ws	washing machine space		

Ground floor



First floor



* Windows apply to selected plots only. Please see sales advisor for further details.

Please refer to the sales advisor for specific plot details as the illustrations shown are computer generated impressions of how the property may look so are indicative only. External details or finishes may vary on individual plots and homes may be built in either detached or attached styles depending on the development layout. Exact specifications, window styles and whether a property is left or right handed may differ from plot to plot. The floorplans shown are not to scale. Measurements are based on the original drawings. Slight variations may occur during construction.



The Holly

2 bedroom home

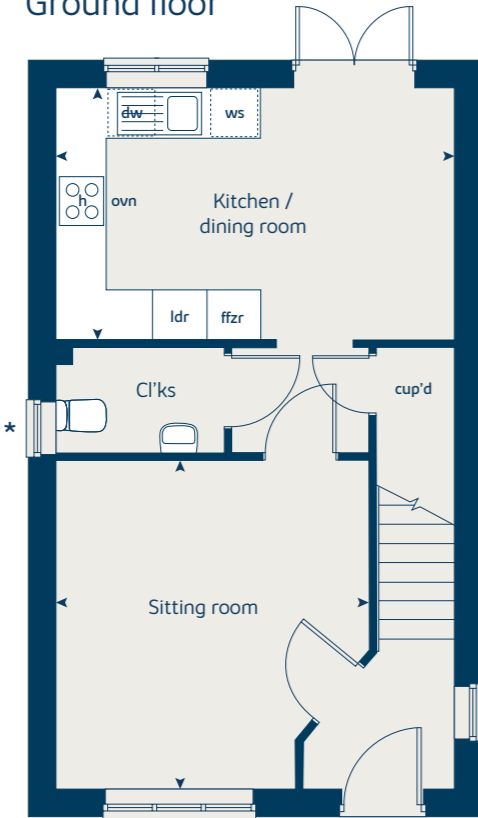
Ground floor	metres	feet / inches
Kitchen / dining room	4.74 x 3.00	15' 6" x 9' 10"
Sitting room	3.72 x 3.91	12' 2" x 12' 10"

First floor	metres	feet / inches
Bedroom 1	3.59 x 3.20	11' 9" x 10' 5"
Bedroom 2	4.74 x 3.39	15' 6" x 11' 1"

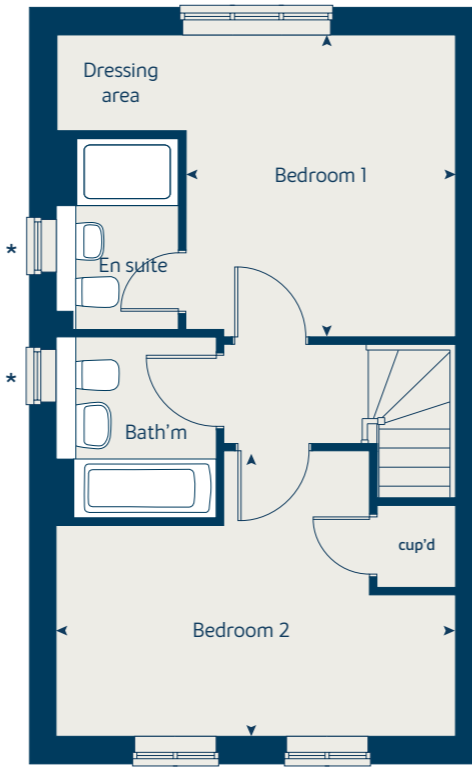
The Holly | X204 P6 C0003 |
 This floorplan has been produced for illustrative purposes only. Room sizes shown are between arrow points as indicated on plan. The dimensions have tolerances of + or -50mm and should not be used other than for general guidance. If specific dimensions are required, enquiries should be made to the sales advisor.

ovn	oven	ldr	larder
h	hob	ffzr	fridge freezer
dw	dishwasher	cup'd	cupboard
ws	washing machine space	◀ ▶	measuring points

Ground floor



First floor



* Windows apply to selected plots only. Please see sales advisor for further details.

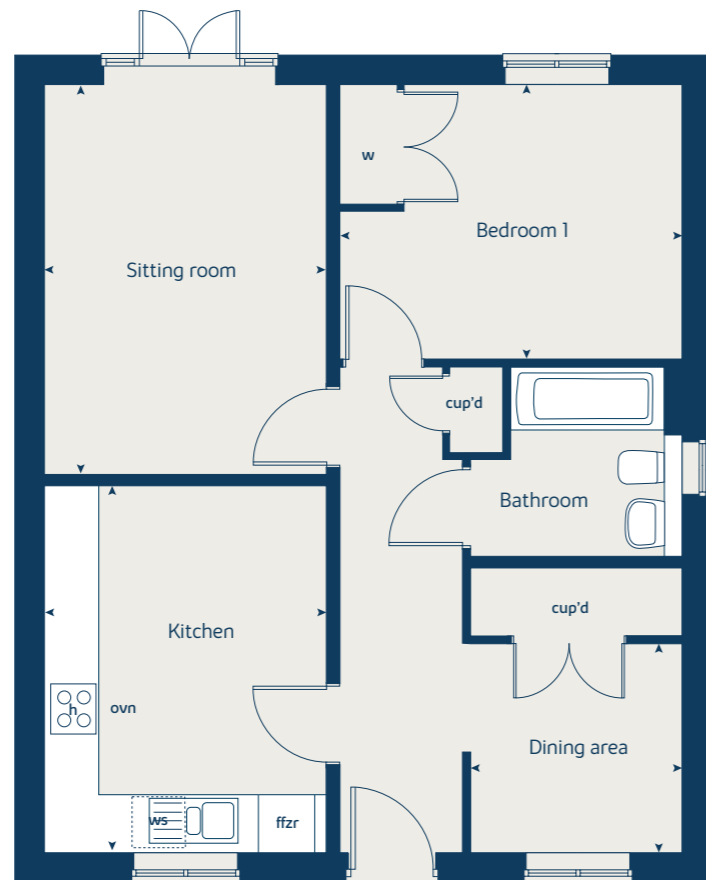
Please refer to the sales advisor for specific plot details as the illustrations shown are computer generated impressions of how the property may look so are indicative only. External details or finishes may vary on individual plots and homes may be built in either detached or attached styles depending on the development layout. Exact specifications, window styles and whether a property is left or right handed may differ from plot to plot. The floorplans shown are not to scale. Measurements are based on the original drawings. Slight variations may occur during construction.



The Walton

1 bedroom bungalow

Ground floor



Ground floor	metres	feet / inches
Kitchen	4.06 x 3.12	13' 4" x 10' 3"
Dining area	2.34 x 2.31	7' 8" x 7' 7"
Sitting room	4.31 x 3.12	14' 2" x 10' 3"
Bedroom 1	3.79 x 3.03	12' 5" x 10' 0"

The Walton | PB01 C0003 |

This floorplan has been produced for illustrative purposes only. Room sizes shown are between arrow points as indicated on plan. The dimensions have tolerances of + or -50mm and should not be used other than for general guidance. If specific dimensions are required, enquiries should be made to the sales advisor.

ovn	oven	cyl	hot water cylinder
h	hob	w	wardrobe
dw	dishwasher	cup'd	cupboard
ws	washing machine space	◀ ▶	measuring points
ffzr	fridge freezer		

Please refer to the sales advisor for specific plot details as the illustrations shown are computer generated impressions of how the property may look so are indicative only. External details or finishes may vary on individual plots and homes may be built in either detached or attached styles depending on the development layout. Exact specifications, window styles and whether a property is left or right handed may differ from plot to plot. The floorplans shown are not to scale. Measurements are based on the original drawings. Slight variations may occur during construction.





Enhance and personalise your new home with upgrades and extras from our **Select** range

On top of the unique specification at The Pavilions, you can also use the Bovis Homes Select brochure to add even more finishing touches to your property and personalise your new home even more.

From upgrading your bathrooms with stunning ceramics, or adding smooth sliding wardrobes to your master bedroom, there are a wide range of additional options and choices available.

We also have a range of flooring for you to choose from that includes luxurious carpets, stylish Karndean, ceramics and vinyl. There's also a choice of branded appliances for your kitchen as well as lighting and electrical upgrades.

The availability of items is subject to the stage of build and house type, but our sales advisors will be happy to provide guidance so you can tailor your new home however you choose.

Pick up a **Select** brochure from your sales advisor today to find an extensive list of items available. Such as:

- Quartz kitchen worktops
- Upgraded fridge freezer
- Upgraded dishwasher
- Flooring
- Built-in Symphony wardrobes
- Upgraded tiling in main bathroom and en suite

The availability of items is subject to the stage of build and can vary by development and housetype. Our sales advisors will be pleased to provide you with a full brochure and guidance.

A home designed with you in mind

We are constantly reviewing our houses and ensuring they are everything that our customers want in a home. That's why we are proud to have developed and launched our new range of homes.

These homes have been created to embrace modern design and styling, whilst retaining the classic architectural traditions on which Bovis Homes has built its heritage and brand since 1885.

An integral part of the design process for our new range of homes was to ensure they have a real wow factor and eye-catching kerb appeal. From designing external elevations to create attractive street scenes through to maximising the flow and size of the rooms, the homes include a variety of features to capture the attention.

The size, positioning and number of windows in our new collection have created bright and airy homes, this mixed in with the higher ceilings gives your property a spacious feel.

The flow and layout of the new homes has been a key consideration to accommodate today's lifestyles, with a focus on future living. With the kitchen at the heart of the home, impressive family spaces have been included to create spacious, sociable living areas, while attention to master bedrooms and en suites has given the homes added desirability.

Many of our properties include luxurious bi-fold doors helping to bring the outside in and enhance the gardens as an extended living area.

The Pavilions

Kenilworth, Warwickshire CV8 1FE

01926 760 025

www.bovishomes.co.uk



The Pavilions is located just south of Kenilworth in the heart of Warwickshire. To find us, leave the A46 and take the A452 towards Kenilworth.

After just less than half a mile, bear left at the roundabout (with the petrol station on your right) and take the Warwick Road to Leek Wootton.

The Pavilions is less than half a mile on the left hand side immediately after Kenilworth Cricket Club.





Bovis Homes Limited, West Midlands region, Bromwich Court, Highway Point, Gorsey Lane, Coleshill, Warwickshire B46 1JU. Telephone: 01675 437 000

Produced by the Bovis Homes Graphic Design Department. C0003 GD52526