



REGENT
ESTATES

GEORGE STREET, BERKHAMSTED

£479,000 Freehold

ACCOMMODATION

Welcome to George Street, Berkhamsted - a charming location for this character property that exudes warmth and history. This delightful two double bedroom cottage, nestled in a conservation area, offers a unique opportunity to live in a picturesque setting.

As you step inside, you are greeted by 2 inviting reception rooms, including one with a wood burning stove, that are perfect for entertaining guests. The property boasts 2 cosy bedrooms, providing a comfortable and peaceful retreat at the end of the day.

The kitchen and bathroom are well-appointed, ensuring your daily routines are both convenient and enjoyable. The mid-terrace layout of the cottage adds to its charm, offering a sense of community while still providing privacy.

Outside, a lovely garden awaits, where you can enjoy the fresh air and perhaps cultivate your own green oasis. The property is well presented, ready for you to move in and start creating new memories.

Don't miss out on the opportunity to own a piece of history in this desirable location. This character property on George Street is a true gem that combines traditional charm with modern comfort.

IMPORTANT NOTICE

1. These sales particulars have been prepared from information supplied by the vendors and information collated by Regent Estates.
2. Confirmation has been sought from the vendors to confirm these particulars accuracy.
3. All measurements given have a tolerance of 3" in accordance with RICS Code of Measuring Practice.
4. None of these appliances, plumbing or electrics mentioned within these particulars have been tested by ourselves, prospective purchasers are urged to check their condition before entering in to purchase.

VIEWING

Strictly by appointment through Regent Estates.

01442 877878
141-143 High Street, Berkhamsted, Herts,
HP4 3HH

Email: info@regent-estates.com
www.regent-estates.com

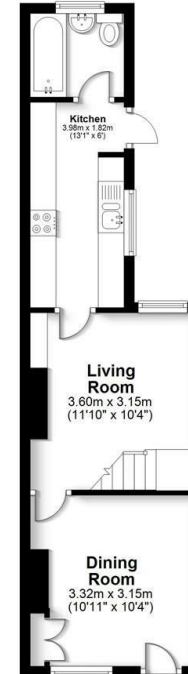






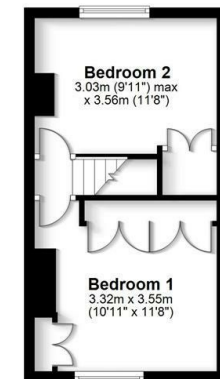
Ground Floor

Approx. 32.7 sq. metres (351.5 sq. feet)



First Floor

Approx. 24.6 sq. metres (264.4 sq. feet)



Total area: approx. 57.2 sq. metres (615.9 sq. feet)

FOR ILLUSTRATIVE PURPOSES ONLY - NOT TO SCALE
The position and size of doors, windows, appliances and other features are approximate only. Total area includes garages and outbuildings - © My Home Property Marketing - Unauthorised reproduction prohibited.
Plan produced using PlanUp.

REGENT
ESTATES

TELEPHONE: 01442 877878

141-143 High Street, Berkhamsted,
Herts, HP4 3HH

Email: info@regent-estates.com

www.regent-estates.com