



REGENT
ESTATES

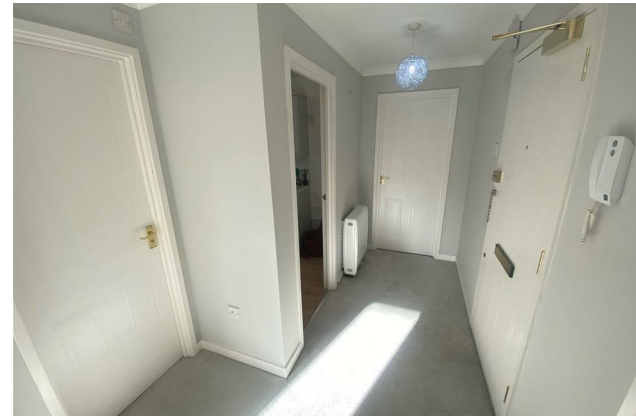
PARK VIEW ROAD, BERKHAMSTED

£1,450 PCM

DESCRIPTION

AVAILABLE NOW! An immaculate first floor flat, BRAND NEW KITCHEN AND BATHROOM, recently redecorated and re-carpeted throughout, ideally located just off Berkhamsted High Street and benefitting from TWO allocated parking spaces and communal gardens. UNFURNISHED. Electric heating. EPC Rating C. Council Tax Band D.

Accommodation: Entrance hallway, dual aspect living room, kitchen, master bedroom with mirrored wardrobes, second double bedroom, bathroom with electric shower over bath.



VIEWING

Strictly by appointment through Regents Estates

01442 877878

141-143 High Street, Berkhamsted, Herts, HP4 3HH

Email: info@regent-estates.com

Important Notice

1. All measurements given have a tolerance of 3" in accordance with RICS Code of Measuring Practice.
2. The floor plan is not drawn to scale. Room sizes are taken between internal wall surfaces and should not be relied upon for carpets and furnishings.

