



REGENT  
ESTATES



# MONTGOMERIE CLOSE, BERKHAMSTED

£599,950 Freehold

---

## ACCOMMODATION

Tucked away in a peaceful cul-de-sac location, this four-bedroom semi-detached home combines contemporary design with a highly convenient Berkhamsted address. Arranged over three carefully designed floors and extending to 1,322 sq ft, the property offers exceptional family living and superb access to the sought-after Bridgewater School.

A bright sitting room welcomes you on entry, while the rear of the house opens into a beautifully appointed kitchen/dining space. Finished with sleek high-gloss cabinetry and integrated appliances, this generous room connects seamlessly to the garden via full-width sliding doors. A guest WC completes the ground floor.

The first floor provides three well-proportioned bedrooms and a stylish family bathroom. The entire top floor is dedicated to the principal suite, offering a serene bedroom with its own private ensuite.

The landscaped rear garden features a paved terrace, raised lawn with attractive planting, and an elevated area perfect for outdoor dining. A single garage and off-road parking—accessed from St Katherines Way—provide welcome practicality.

With gas-fired central heating, all mains services, and Council Tax Band D (Dacorum), this is a beautifully presented home in an enviable location, moments from countryside walks and within easy reach of Berkhamsted's vibrant high street and fast commuter links to London.

## IMPORTANT NOTICE

1. These sales particulars have been prepared from information supplied by the vendors and information collated by Regent Estates.
2. Confirmation has been sought from the vendors to confirm these particulars accuracy.
3. All measurements given have a tolerance of 3" in accordance with RICS Code of Measuring Practice.
4. None of these appliances, plumbing or electrics mentioned within these particulars have been tested by ourselves, prospective purchasers are urged to check their condition before entering in to purchase.

## VIEWING

Strictly by appointment through Regent Estates.

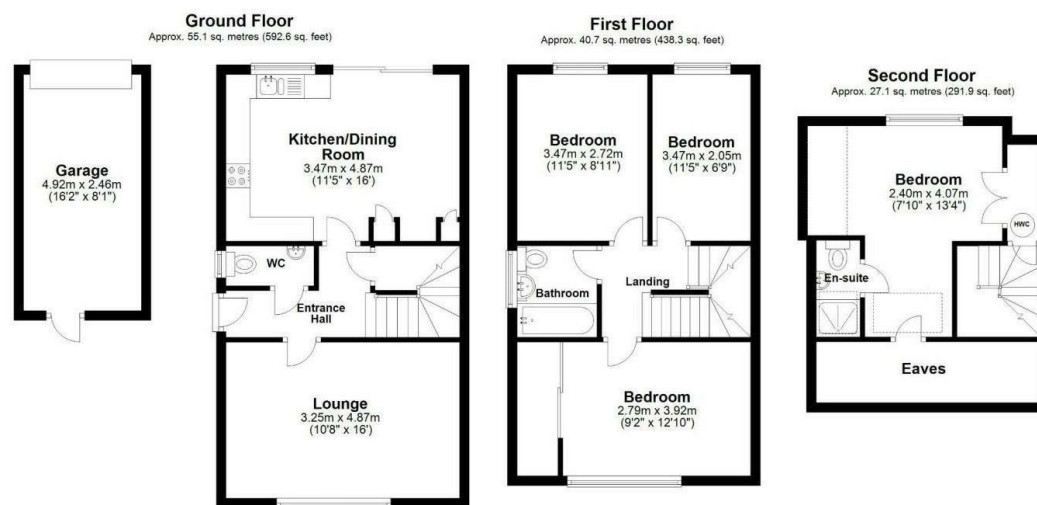
01442 877878  
141-143 High Street, Berkhamsted, Herts,  
HP4 3HH

Email: [info@regent-estates.com](mailto:info@regent-estates.com)  
[www.regent-estates.com](http://www.regent-estates.com)









Total area: approx. 122.9 sq. metres (1322.7 sq. feet)

Disclaimer - Floor plan is for marketing purposes only and is to be used as a guide - SKM Studio  
Plan produced using PlanUp.

REGENT  
ESTATES

TELEPHONE: 01442 877878

141-143 High Street, Berkhamsted,  
Herts, HP4 3HH

Email: [info@regent-estates.com](mailto:info@regent-estates.com)

[www.regent-estates.com](http://www.regent-estates.com)