



REGENT
ESTATES

HIGH STREET, NORTHCHURCH, BERKHAMSTED

£335,000 Freehold

ACCOMMODATION

Northchurch Place is a collection of just six cluster homes converted from this handsome period property, sympathetically restored. Arranged over two floors, this generous sized one bedroom home has its own private garden and is finished off to the highest standard throughout. This rare stunning home benefits from allocated parking, rear access and sold as Freehold.

Downstairs the accommodation creates a seamless flow between living and kitchen areas, providing clever and thoughtful storage spaces. The windows flood the room with natural light, accentuating the sense of openness. Tastefully designed and finished, without losing any of the traditional charm.

On the first floor, the generous master bedroom has stylish bespoke fitted wardrobes and drawers. A good sized separate bright and airy bathroom completes the internal accommodation.

Outside, the home continues to impress with its beautifully landscaped yard, perfect for outdoor gatherings or simply enjoying a peaceful moment in nature.

Estate service charge - £250 per annum
Ideal for a downsizers, first time buyers and investors.

Northchurch is just a short distance from the historic market town of Berkhamsted. Northchurch boasts a parish church, local schools and a small selection of shops, including a Tesco and Simmons the Bakers.

Berkhamsted town centre is a short walk away with its wide range of shops, restaurants, and recreational and educational facilities, for commuters, Berkhamsted Station provides a fast and frequent service to London (Euston) and the A41 bypass gives easy access to the M25 and M1.

IMPORTANT NOTICE

1. These sales particulars have been prepared from information supplied by the vendors and information collated by Regent Estates.
2. Confirmation has been sought from the vendors to confirm these particulars accuracy.
3. All measurements given have a tolerance of 3" in accordance with RICS Code of Measuring Practice.
4. None of these appliances, plumbing or electrics mentioned within these particulars have been tested by ourselves, prospective purchasers are urged to check their condition before entering in to purchase.

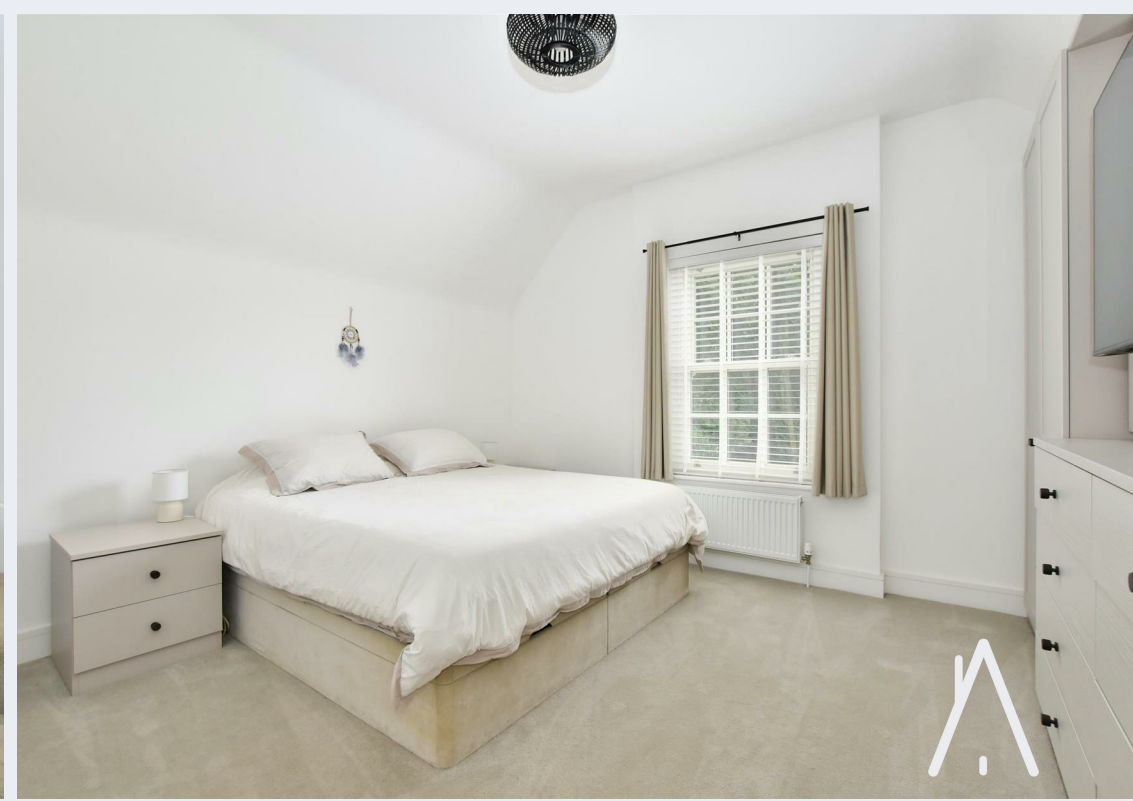
VIEWING

Strictly by appointment through Regent Estates.

01442 877878
141-143 High Street, Berkhamsted, Herts,
HP4 3HH

Email: info@regent-estates.com
www.regent-estates.com







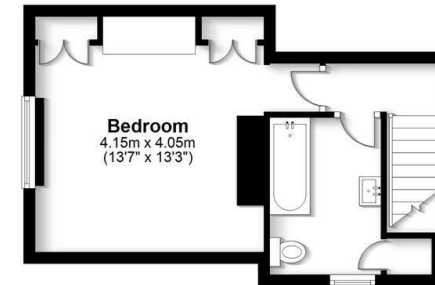
Ground Floor

Approx. 27.6 sq. metres (297.5 sq. feet)



First Floor

Approx. 27.6 sq. metres (296.9 sq. feet)



Total area: approx. 55.2 sq. metres (594.5 sq. feet)

FOR ILLUSTRATIVE PURPOSES ONLY - NOT TO SCALE - The position and size of doors, windows, appliances and other features are approximate only. Total area includes garages and outbuildings - © My Home Property Marketing - Unauthorised reproduction prohibited.
Plan produced using PlanUp.

REGENT
ESTATES

TELEPHONE: 01442 877878
141-143 High Street, Berkhamsted,
Herts, HP4 3HH
Email: info@regent-estates.com
www.regent-estates.com