



HUNTERS[®]

HERE TO GET *you* THERE

STOPES BROW, LOWER DARWEN

Offers Over £130,000



This spacious two bedroom terrace makes the ideal first home for anyone looking to get on the ladder.

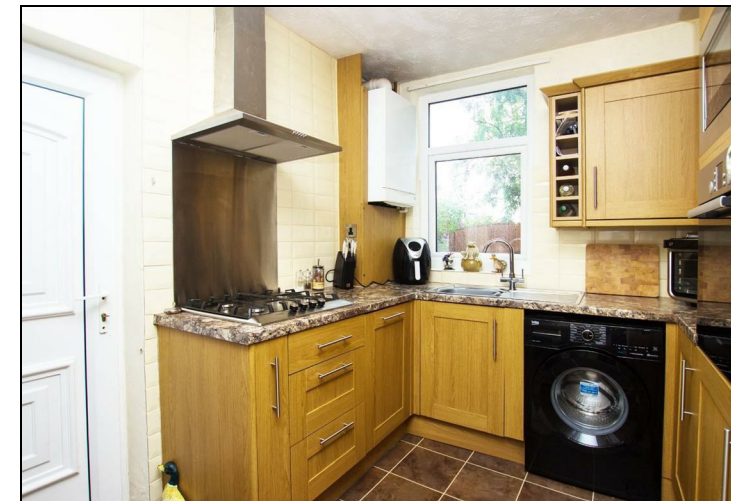
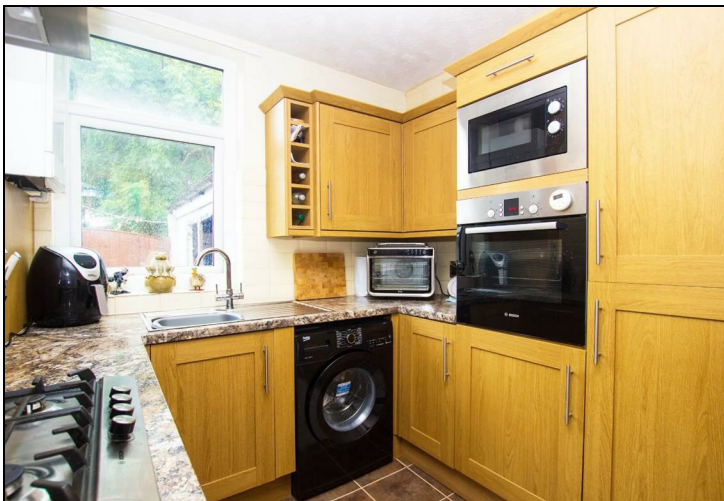
The property comprises; vestibule, hall, front lounge, sitting room and a modern kitchen. To the first floor there are two double bedrooms and a stylish three piece shower room. The internal layout is spacious and is finished off to a well presented standard. To the rear there is a good size tidy yard with an storage outbuilding.

Stopes Brow is located in Lower Darwen and provides extremely easy access onto the M65 motorway link. Blackburn town centre is a 5 minute drive and there are bus routes on the doorstep making commuting hassle free.

OUR THOUGHTS - *'As a first home to get you started you could do a lot worse. Deceptively spacious and an excellent location'*

KEY FEATURES

- Garden Fronted Terrace
- 2 Double Bedrooms
 - 2 Sitting Rooms
 - Modern Kitchen
- Modern Shower Room
- Good Size Tidy Rear Yard
- Lower Darwen Location
- Great For First Time Buyers





Ground Floor

Approx. 48.2 sq. metres (518.8 sq. feet)



First Floor

Approx. 39.5 sq. metres (425.3 sq. feet)



Total area: approx. 87.7 sq. metres (944.1 sq. feet)

This floor plan is owned by Hunters Estate Agent and must not be copied or edited.
Plan produced using PlanUp.

