



**HUNTERS**<sup>®</sup>  
HERE TO GET *you* THERE





# BRAEMAR LANE, WORSLEY, MANCHESTER

Offers Over £265,000



This beautiful three bedroom semi ticks all the boxes for young families & first time buyers. Available today with no onward chain we are expecting plenty of interest.

The property comprises; entrance hall, cosy front lounge & a stylish dining kitchen with integrated appliances. From the kitchen there is direct access into a spacious rear garden. The garden comes with lawn along with a wood built pergola seating area to the back. To the first floor there is a landing area giving access to three bedrooms and a three piece bathroom. Two of the bedrooms benefit from fitted wardrobes. Out front there is a block paved driveway along with on street parking.

This property is well positioned on a quiet cul-de-sac, with access to local amenities along with schools & transport links into Manchester & its surrounding areas.

**OUR THOUGHTS** - *'First house hunting? This would be perfect!'*



## KEY FEATURES

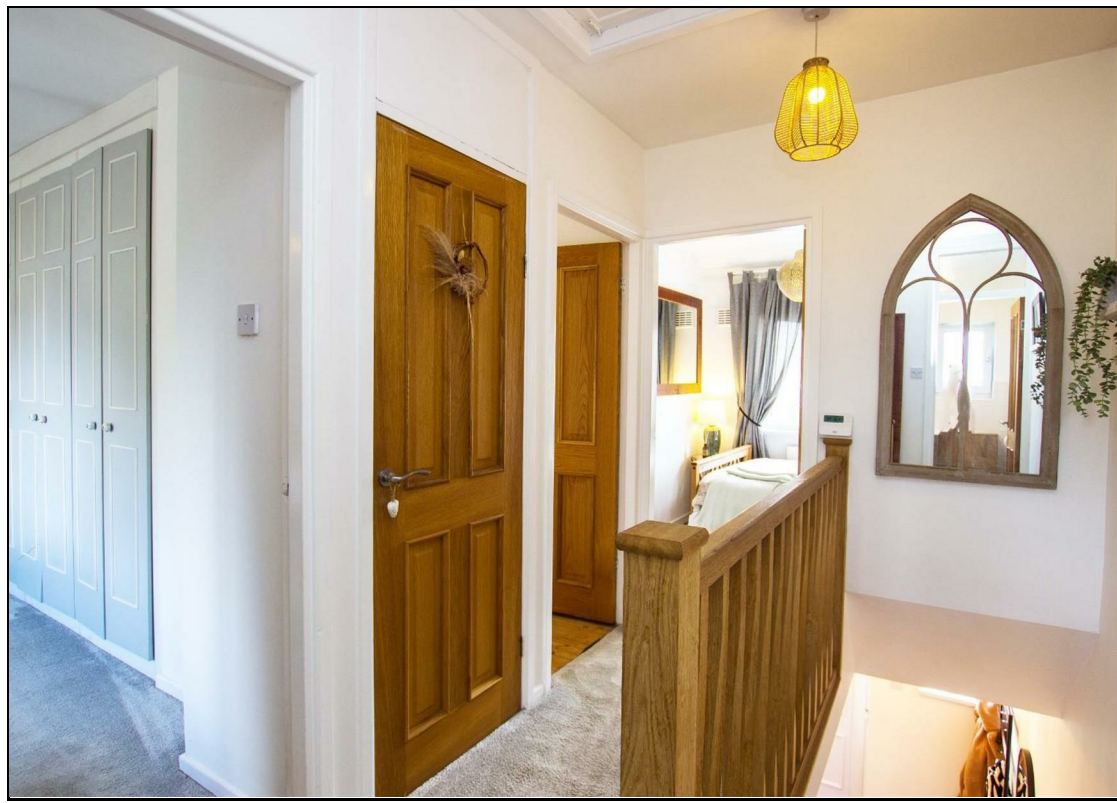
- Modern Semi Detached
- Dining Kitchen With Appliances
  - Cosy Lounge
- Welcoming Entrance Hall
  - Three Bedrooms
  - Three Piece Bathroom
- Spacious Rear Garden With Wood Pergola
  - Private Driveway
  - Excellent Location
- Ideal For Young Family/Couples







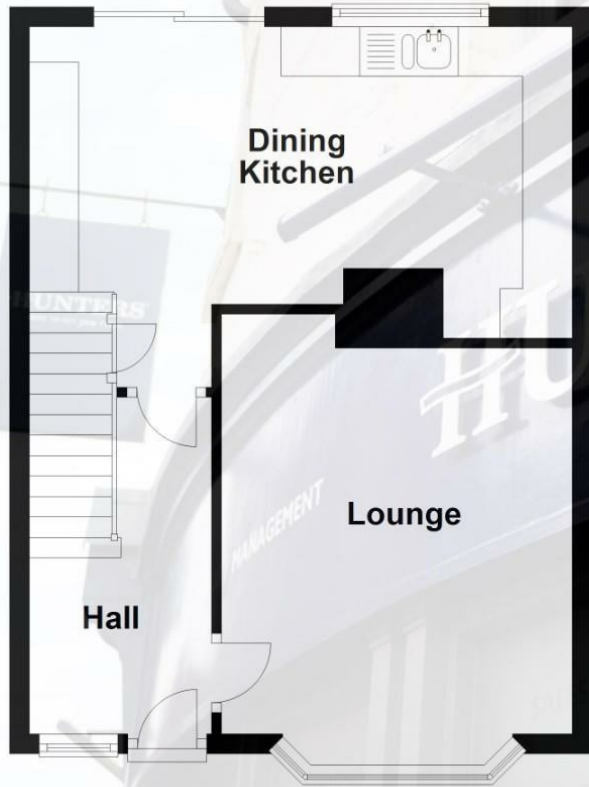






### Ground Floor

Approx. 39.6 sq. metres (426.2 sq. feet)



### First Floor

Approx. 39.3 sq. metres (423.3 sq. feet)



Total area: approx. 78.9 sq. metres (849.5 sq. feet)

This floor plan is owned by Hunters Estate Agent and must not be copied or edited.  
Plan produced using PlanUp.



207-209 Duckworth Street, Darwen, Lancashire, BB3 1AU | 01254 706471  
darwen@hunters.com | www.hunters.com



This Hunters business is independently owned and operated by Baxter Helmn Estates Limited | Registered Address: 207 - 209 Duckworth Street, Darwen, Lancashire, BB3 1AU | Registered Number: 8986836 England and Wales | VAT No: 872 1369 16  
with the written consent of Hunters Franchising Limited.