

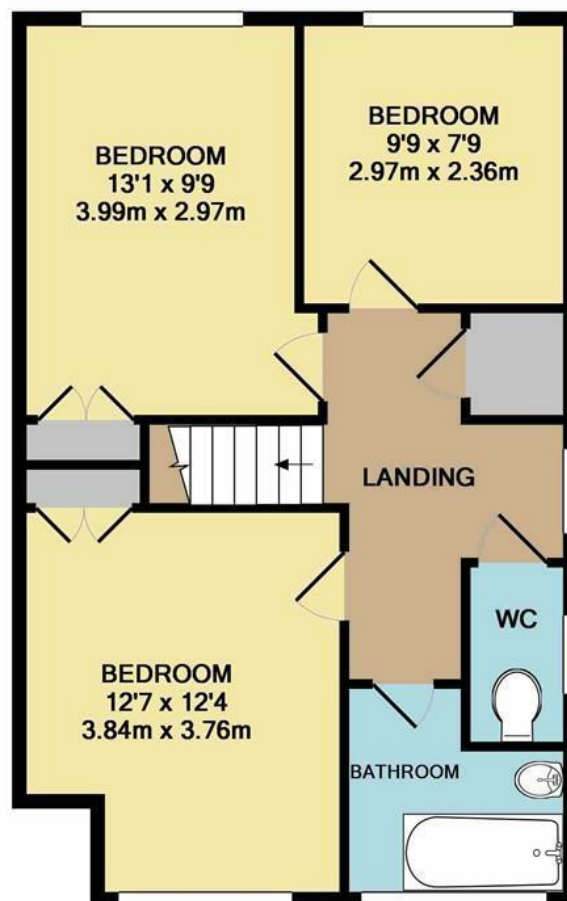
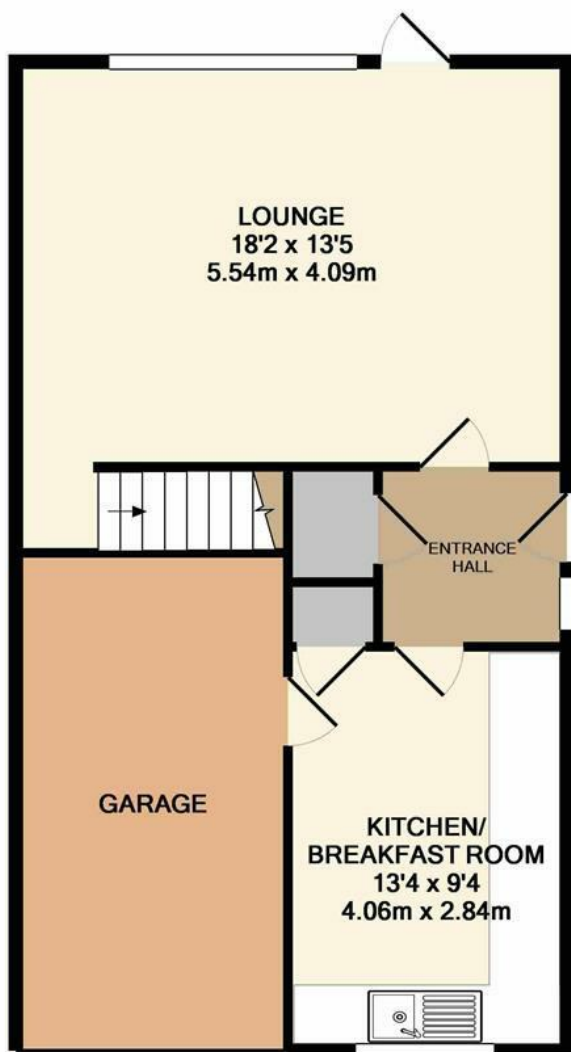


126 High Street, Farnborough, Kent, BR6 7BA

Situated in the heart of Farnborough Village is the well maintained three bedroom semi detached house. Accommodation comprises to the ground floor kitchen/breakfast room and a spacious lounge. To the first floor there are three good size bedrooms, family bathroom with separate W.C. Outside to the rear is a court yard garden and there is a garage and off street parking to the front. Farnborough village boasts easy access to Bromley and Orpington, local shops and popular local schools. Your earliest viewing is essential.

- Semi detached house
- Three bedrooms
- Double glazing
- Gas fired central heating
- Farnborough Village location
- Garage and off street parking

£500,000



TOTAL APPROX. FLOOR AREA 1150 SQ.FT. (106.8 SQ.M.)

Whilst every attempt has been made to ensure the accuracy of the floor plan contained here, measurements of doors, windows, rooms and any other items are approximate and no responsibility is taken for any error, omission, or mis-statement. This plan is for illustrative purposes only and should be used as such by any prospective purchaser. The services, systems and appliances shown have not been tested and no guarantee as to their operability or efficiency can be given
Made with Metropix ©2018

