



THOMAS
MERRIFIELD

SALES LETTINGS

150 Gidley Way
Horspath, Oxford, OX33 1TD

150 Gidley Way, Horspath, Oxford OX33 1TD

A substantial five bedroom family home set within 0.77 acres in an elevated position with far reaching views to both the front and rear.

- Entrance hall and cloakroom
- Sitting room leading into the dining room
- Living room overlooking the garden
- Kitchen and conservatory
- Master bedroom with en-suite and balcony
- Four further bedrooms one with en-suite
- Family bathroom
- Large garden and enclosed tennis court
- Double garage and separate office
- EPC Rating: B. Council Tax Band: G

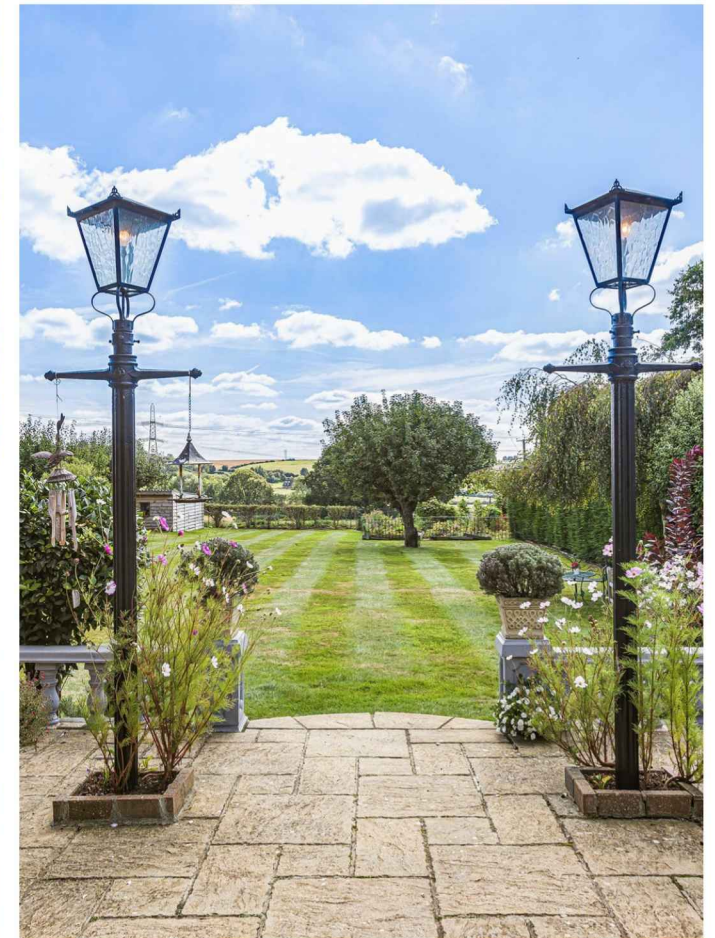
Originally built in the 1970's and with subsequent extensions this attractive property provides spacious and versatile accommodation set across two floors approximately 4017 sqft (including garages). The ground floor features a sitting room, dining room, office, kitchen/conservatory and a large games/media room. Across the first floor are five bedrooms, the master bedroom having an en-suite and balcony, the second bedroom also with an en-suite, and a family bathroom. Above the double garage is a separate office. Within the rear gardens are patios for entertaining, a large expanse of lawn and an enclosed hard tennis court. According to Ofcom, Standard broadband is available and you are likely to have good mobile voice and data coverage outdoors and limited indoors with certain networks. The property also has Solar Panels and EV charging point.

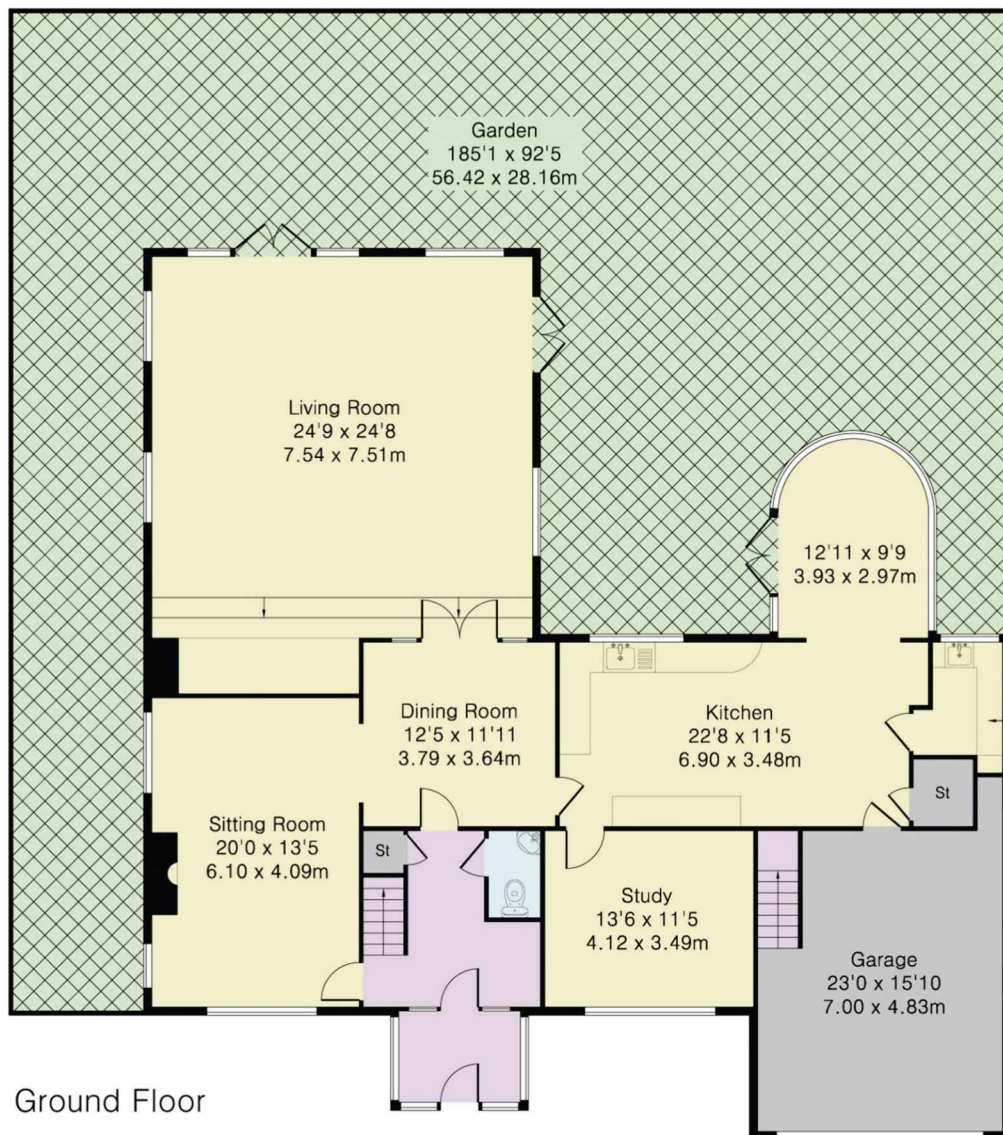
Guide Price £1,500,000





Horspath is located just 1.5 miles from the Oxford Ring Road and approximately 4 miles from the city. Junction 8 of the M40 is accessible at Wheatley, Horspath has a thriving village community including a primary school, village pub and restaurant, general stores and The Horspath Hub Community Park Academy secondary school is located at nearby Holton. Shotover Country Park is close-by offering woodland walks and bridleways. Central Oxford offers a comprehensive range of cultural and entertainment venues, galleries and museums, as well as cafes and restaurants to suit most tastes. There is a direct rail and bus service through to London, Paddington and Victoria respectively.





Approximate Gross Internal Area 4017 sq ft - 373 sq m

Ground Floor Area 2211 sq ft – 205 sq m

First Floor Area 1806 sq ft – 168 sq m

